

**Q:** Does a room need a view?

**A:** No. The room is the view.

- Billy Cotton



**1**

**Flo do Mar**  
Hotel Design

Pages 5 to 15

**2**

**Grow Collective**  
PG Bison Student Competition

Pages 17 to 21

**3**

**Campus**  
Boxwood Property Fund Office Design

Pages 23 to 33

**4**

**Taemane**  
Caesarstone Student Competition

Pages 35 to 39

**5**

**Antechamber**  
Florstore Reception Design

Pages 41 to 43

**6**

**Casa Labia**  
Photography

Pages 45 to 47

**7**

**The Right Chair**  
Constitutional Hill 12th Chair Competition Entry

Pages 49 to 51

**8**

**The Flower Shop**  
First Year Retail Design Project

Pages 53 to 55

**9**

**Apartment Cotton**  
First Year Designer's Apartment Project

Pages 57 to 59

**10**

**Smudge**  
Upcycle Product Design

Pages 61 to 63

**11**

**Surface**  
Textile Design

Pages 65 to 67

**12**

**Hideaway**  
Bar Joinery

Pages 69 to 71

**13**

**The Light Room**  
Drawing Package

Pages 73 to 79





# Flo do Mar

Hotel Design

## Brief

A new luxury 5-star hotel designed by SCOTT+PARTNERS is about to break ground on the world renowned Camps Bay strip in Cape Town, South Africa.

As the Interior Designer you must design the hotel reception, lobby, bathrooms hotel bar and dining area, the hotel terrace with pool and hotel lounge, two different room types as well as come up with an idea for a feature on the beach. As the designer you are also required to think of a name and a brand. You have been given an existing plan, the structure of which cannot be altered at all.

The design challenges are to: design the layout to work optimally within the allocated areas, incorporate a clear concept and consistent design thread throughout the hotel, choose all materials for floors, walls and ceilings, choose all fittings, finishes and furniture and lastly ensure responsible and innovative use of local and international materials, furniture and artwork, keeping a 5-star hotel look and feel in mind.

## Concept

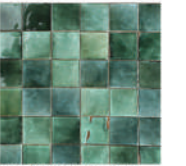
The Flo do Mar (meaning Flower of the Sea) was a Portuguese carrack that sailed the seas during the early 1500s. The ship was carrying a great amount of treasure when it sank somewhere between Portugal and India during one of its voyages. Attempts to find this ship have been made over the years, though they have not been met with success. Whilst some have claimed that the ship has been found, these have not been supported with irrefutable evidence. Thus the wreck of The Flor do Mar, along with the treasure it was transporting, is still considered to be lost.

Until now... Flo do Mar Camps Bay is an eclectic gem found on the shores of the West Coast. A completely unexpected hotel in the heart of Cape Town's tourism hotspot, guests will find themselves needing to return over and over (and over) again to discovery more of what it has to offer.





CUSTOM MICHAEL CHANDLER HAND PAINTED TILE MAP OF ALL THE SHIPWRECKS ALONG THE WESTERN CAPE



GREEN GLAZED TILES BY VEELVLAK



CALCATT MARBLE



SHELL GROTTTO 004 BY FERMOIE



MINERAL WALLPAPER IN ROUGE BY KW



PEBBLE PEB-006 BY FERMOIE



AVENTURINE N-123 BY FERMOIE







**The Galley**

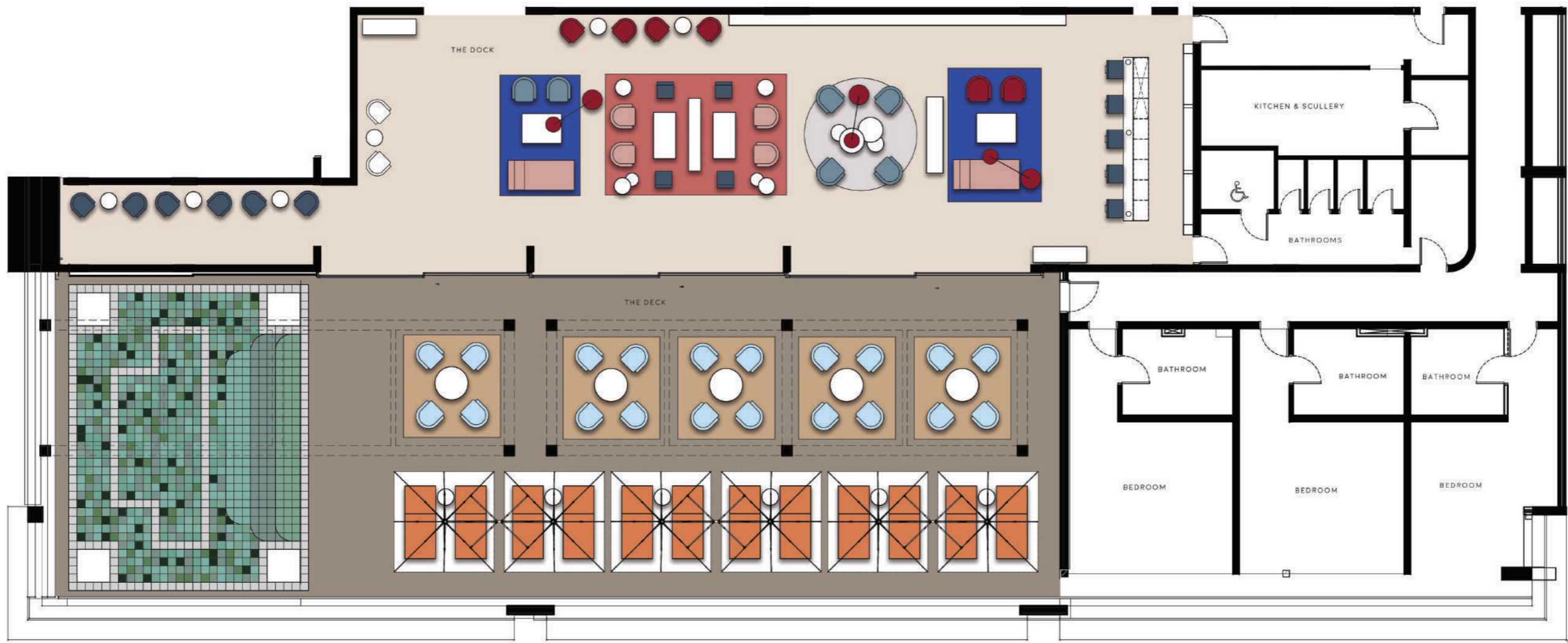
**galley** (n) *the kitchen of the ship.*

To the right of the reception, hotel guests as well as visitors can find The Gally, Flo do Mar's in-house restaurant.





RESTAURANT SEATS APPROX. 100 PERSONS  
BAR & LOBBY SEATS APPROX. 30 PERSONS







SPECTRAL TURNING BLUE BY CATHY ABRAHAMS



LESS IS MORE BY ANICO MOSTERT



MA OLEDI (TOP) & OVERSIZED TEE (BOTTOM) BY LUXOLO WITVOET



BABALO BY ZENADE MTATI



STITCHES BY REEF SITHOLE



KELLY WEARSTLER OTTOMAN



RUFFLE ROUGE BY THE RUG COMPANY



ULTRICHT ARMCHAIR



ANTIQUE BEVAN FUNNELL BURR WALNUT CUT COFFEE TABLE

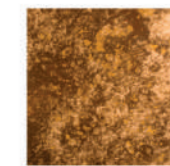


ANTIQUE CHINESE PORCELAIN VASES



MURR MURR WANING ARMCHAIR





AGED MIRROR



KEMATA LAGOON BY ST. LEGER & VINEY



CUSTOM HAND PAINTED TILE



HUSKY IN SEAFOAM BY HERTEX



WALNUT DARK WOOD



TONY IN NAVY BY HERTEX



### The Deck

**deck** (n) a floor of a ship, especially the upper, open level extending for the full length of the vessel.

On the third floor, guests can find The Deck, an outdoor pool terrace on which to relax and enjoy the views of Camps Bay.

### The Dock

**dock** (n) a protected water area in which vessels are moored - the term is often used to denote a pier or a wharf.

The Dock is Flo do Mor's lounge on Level Three, right next to The Deck. The perfect place for guests to moor.





GUBI TABLE LAMP



PISCES BY THE RUG COMPANY



20TH CENTURY CHINESE PORCELAIN TABLE LAMPS



GROPIUS CHAIR BY NOOM

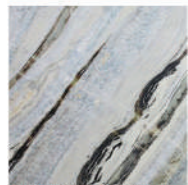


19TH CENTURY JAPANESE CONSOLE TABLE





VERDE SAINT DENNIS



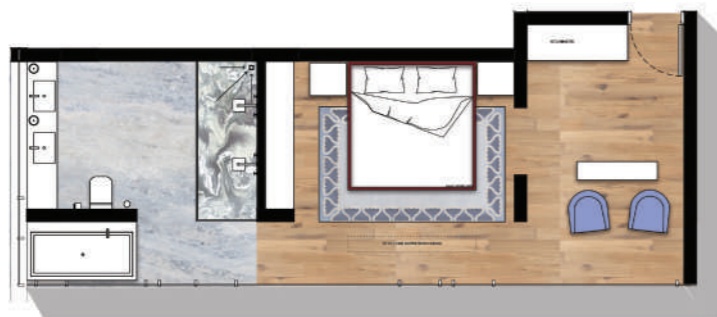
BLUE RIVER ONYX BY WOMAG



CALCITE AZULE BY WOMAG



BRASS SANITARYWARE



### Starboard

**starboard** (n) *the right side of a boat when looking forward. Denoted with a green light at night.*

The sea facing rooms are the more luxurious suites with their focus being curating a design experience for the guests.





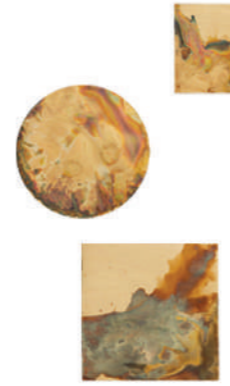
YOLANDA MAZWANA ARTWORK



MINOTTI LESLIE ARMCHAIR



TWIGGY FLOOR LAMP



WATER DIXON VIBRANT MATTER

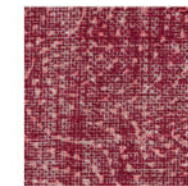


HUE BY THE RUG COMPANY

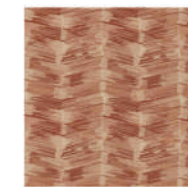


VONDEL BY LEMON

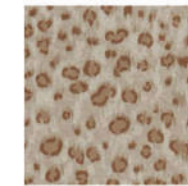




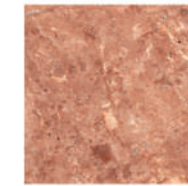
CLOUD 001 BY FERMOIE



LOELIA BY ZOFFANY



WALLIS BY ZOFFANY

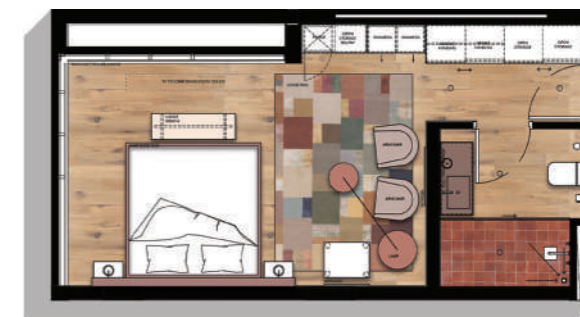


RED TRAVERTINE

### Port

**port** (n) towards the left-hand side of the ship facing forward - denoted with a red light at night.

The mountain facing rooms are red in colour scheme and bold in design.





# Grow Collective

PG Bison Student Competition Entry

## Brief

The Strand Street Quarry supplied much of the stone for the Cape's earliest buildings. No longer in use, the quarry slipped into disregard, left to silently guard the Bo-Kaap from Strand Street. Although planned to be proclaimed a national heritage site, litter, vagrancy and crime have since filled the void. In recent years, a public participation process was initiated looking for ideas on how best to utilise the disused quarry. The disused Strand Street Quarry presents the perfect connection node, linking the V&A Waterfront to the Lion Battery. By starting in the middle and converting the quarry into an attractive tourist destination and connection hub, the full Heritage Route concept can be incubated and realised.

The site and its context needs to inform what should be an inclusive design that remains a big drawcard for tourists. Your design must include the following; a pedestrian entrance point with bus drop-off area adjoining Strand Street, a learning centre, tourist retail (six functional pods), a visitor information centre and ticket sales for the Heritage Route, a restaurant that seats 50 patrons and finally the Strand Street Quarry terminus for the Lion Battery cable car, to include gantry walkway to hold queuing tourists.

## Concept

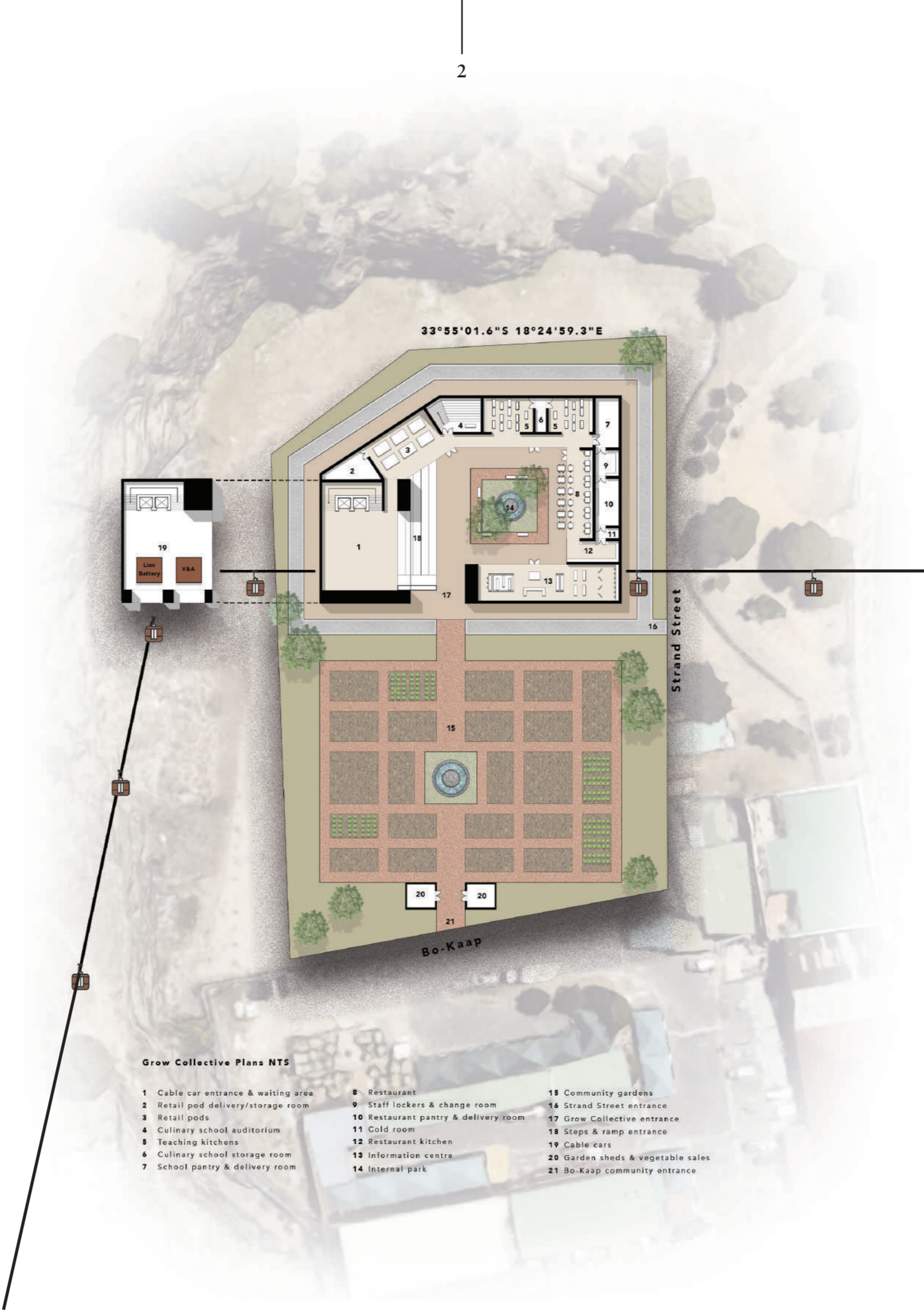
A palimpsest is a manuscript or piece of writing material on which later writing has been superimposed on effaced earlier writing. It is something reused or altered but still bearing visible traces of its earlier form. This links back to the layers not only in the rocks of the quarry but also in its history. Grow Collective is the layer of the future.

The concept of palimpsest comes through in five definitive ways throughout this project: in the mountain layers (Cape Granite, Graafwater Foundation and Table Mountain Sandstone), the writing on the walls, time (past, present and future), experience (the layers that present themselves in the soil, the care in community gardening and finally the farm to table experience) and lastly learning (cultivating a new skill through recopes that have been passed down through generations).









**Grow Collective Plans NTS**

- |                                     |                                      |                                   |
|-------------------------------------|--------------------------------------|-----------------------------------|
| 1 Cable car entrance & waiting area | 8 Restaurant                         | 15 Community gardens              |
| 2 Retail pod delivery/storage room  | 9 Staff lockers & change room        | 16 Strand Street entrance         |
| 3 Retail pods                       | 10 Restaurant pantry & delivery room | 17 Grow Collective entrance       |
| 4 Culinary school auditorium        | 11 Cold room                         | 18 Steps & ramp entrance          |
| 5 Teaching kitchens                 | 12 Restaurant kitchen                | 19 Cable cars                     |
| 6 Culinary school storage room      | 13 Information centre                | 20 Garden sheds & vegetable sales |
| 7 School pantry & delivery room     | 14 Internal park                     | 21 Bo-Kaap community entrance     |











# Campus

Boxwood Property Fund Office Design

## Brief

A number of companies are rethinking the use of the traditional office and looking toward a more collaborative working environment. Instead of traditional desks and chairs, office tenants are looking for a think tank/idea generating/quirky and fun type space where they can have meetings, brainstorm and relax (think google offices (but on a budget)) within their current offices. As a commercial landlord, Boxwood Property Fund want to offer this within their buildings to attract these forward thinking tenants.

As the designer you should include; one wing of the 10th floor for the think tank/idea generating fun space, one of the atriums, the small rooftop area, the office space (including a reception, open plan desks, offices and meeting rooms, a printing area and a small kitchen and coffee area) and lastly an alternative use for one of the parking levels (this just needs to be an idea and not fully designed).

## Concept

Located on Strand Street, the Campus building is a longstanding member of the Cape Town skyline, however now boasts a snazzy new name. Campus will soon showcase a modern home-office styled work space with a zen garden, outdoor yoga studio, urban farm, juice bar and podcast studios. Instead of dreading heading to Campus on a Monday morning, Free Period. members will probably dread leaving on a Friday afternoon.





### The Common Room

This shared lounge space is a colourful and interesting addition to the office where ideas should flow with ease and excitement. This is where the worlds between accountants and graphic designers or writers and statisticians collide to create synergy and magic. It is the true beauty of a shared office space and the overlap of minds that boosts collaboration and creativity.







### Free Period.

The plans for the left wing of the office and the nextdoor atrium have been specifically and intentionally designed to compliment one another perfectly. The lounge area is paralell to the Juice Kitchen's cafe and the sound proof rooms sit next to the yoga and meditation deck.





### The Studies

These modern 4 x 2 pax studies - Geometry, Algebra, Calculus and Trig - are the perfect work space for when privacy is needed in the office. Similarly the 4 x 4 pax studies - History, Physics, Chemistry and Geography - are larger spaces which can be used in a similar vein.

These spaces are available for booking when one requires a private meeting with clients or even as a space for monthly rental. Interesting features within the 10th floor include 3 podcast studios, 2 x 8pax meeting rooms and 4 x private sound proof phone booths.





**The Library**

Not only is the library a chic addition to any modern office, it also operates as a second hand bookstore. Excess stock can be used or purchased by employees at their leisure which would encourage engagement with literature as well as promote sustainability by re-using old books. This space also provides an easily accessible, larger desk space which is more collaborative than the typical closed off office. It also includes plug points, good lighting and the comfort and nostalgia of old books

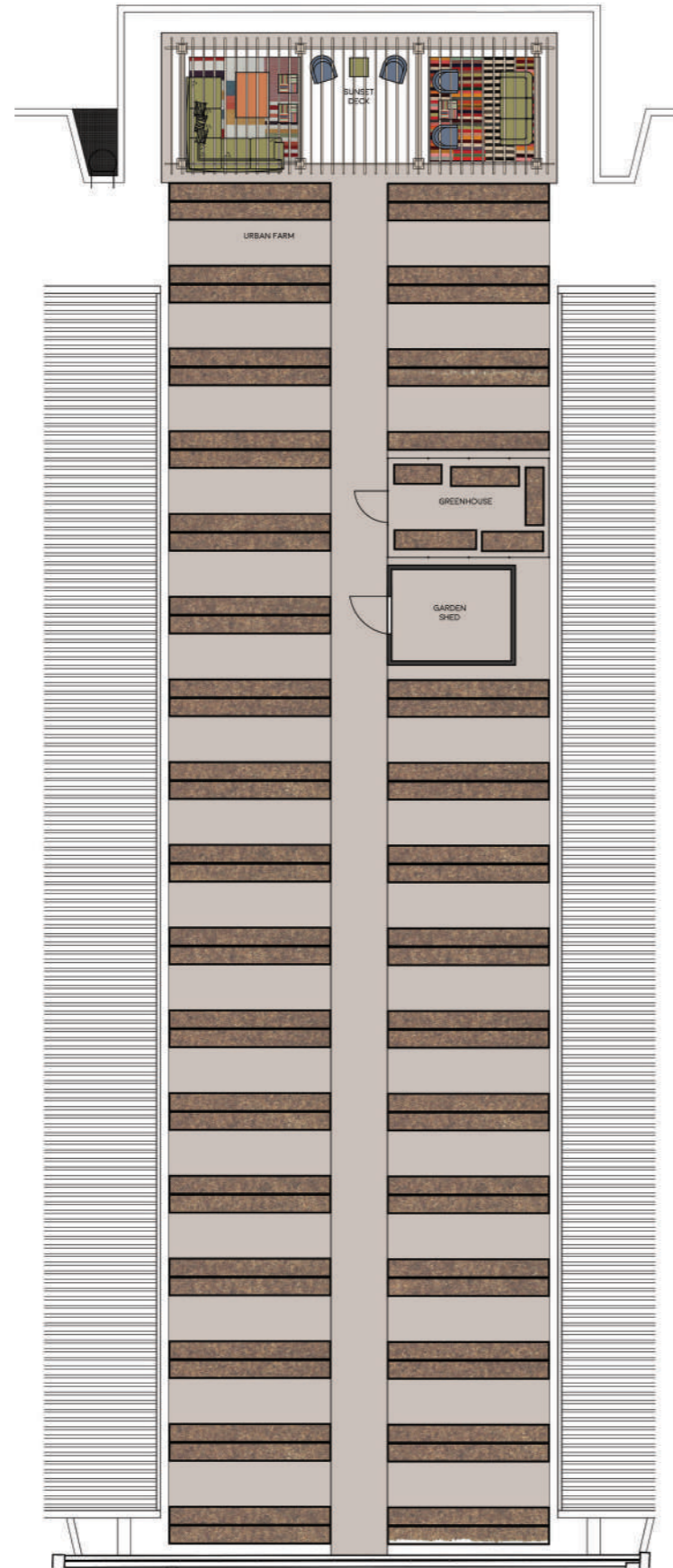




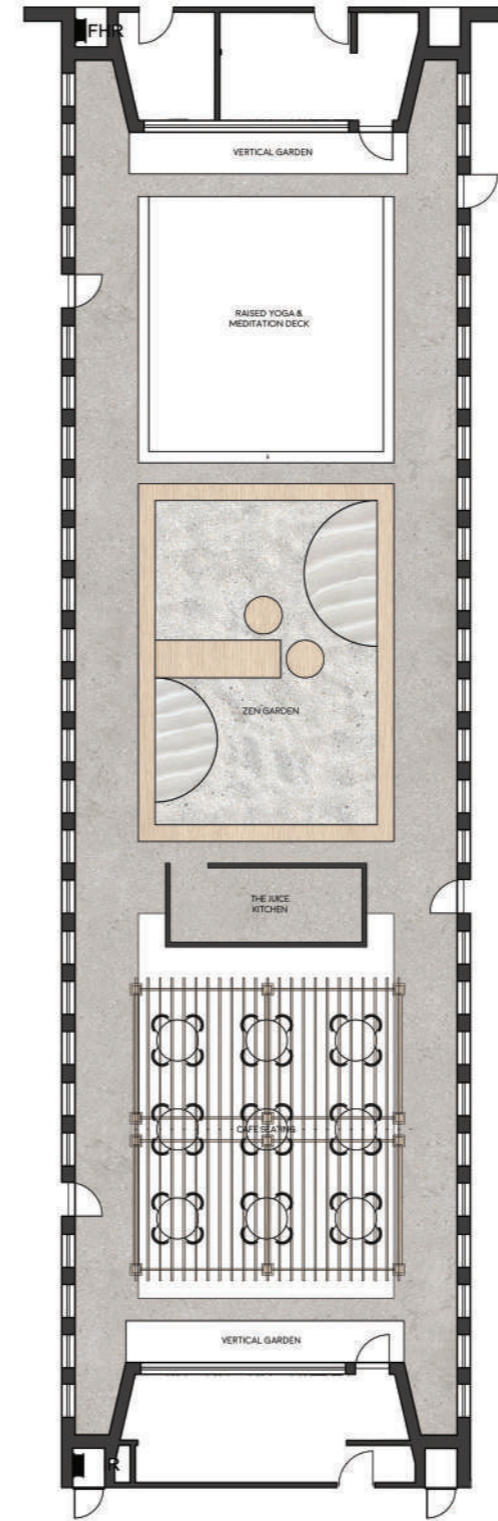
### Recess

A space amongst the offices which aids as an hiatus from one's screen; the other half of the work life balance. This sanctuary holds The Juice Kitchen, where one can purchase fresh juices made with the home-grown organic fruits and vegetables from the rooftop. Furthermore, an outdoor yoga space and zen garden with meditation gaps make this atrium a welcome escape right in the heart of the chaos of Cape Town.





The Cafeteria.



**Recess.**

The plans for the left wing of the office and the nextdoor atrium have been specifically and intentionally designed to compliment one another perfectly. The lounge area is parallel to the Juice Kitchen's cafe and the sound proof rooms sit next to the yoga and meditation deck.







**The Cafeteria** An urban farm, The Veggie Patch, is the cherry on top of the Campus Building. A Johannesburg company Future Farms would be responsible for the installation and consulting as well as overseeing the entire process. Most of the produce would be used at The Juice Kitchen as well as sold there and the rest would be sent to the Oranjezicht Farmers Market to be sold in collaboration with their farmers. There is also a sunset deck for one to enjoy those priceless Cape Town sunsets.







# Taemane

Caesarstone Student Competition

## Brief

Drawing from the Concept of Adaptive Re-use your clients the V&A Waterfront, are looking to reactivate the Collier Jetty as it straddles the tourist driven industry provided by The Waterfront Mall and The Nelson Mandela Gateway to Robben Island and the industrial function of boat repair at the Fish Quay and several marine and logistical industries.

Your challenge is to design a journey along the jetty that houses various programs around the concept of what the historical significance of the jetty was. This would be in the form of a fish market to reignite the industry with an exterior intervention and a restaurant with a specific exterior and interior aesthetic. One must not be overwhelmed by the size of the jetty (220m x 22.5m) and utilise the end of the jetty with the remaining tower structures for the building intervention.

## Concept

Adaptive Re-use of the harbour:

“The process of reusing the existing for a purpose other than which it was originally built or designed for. It is also known as recycling and conversion.”

The discovery of diamonds in South Africa meant that the first section of harbour, the Alfred Basin, was not large enough to accommodate the increased number of ships, this led to its expansion to the Victoria Basin. This is the perfect example of adaptive reuse.

Fancy coloured diamonds:

Coloured diamonds are known in the jewellery trade as “fancy diamonds.” They are far more rare than their clear counterparts. This concept represents the diversity but value within each South African.

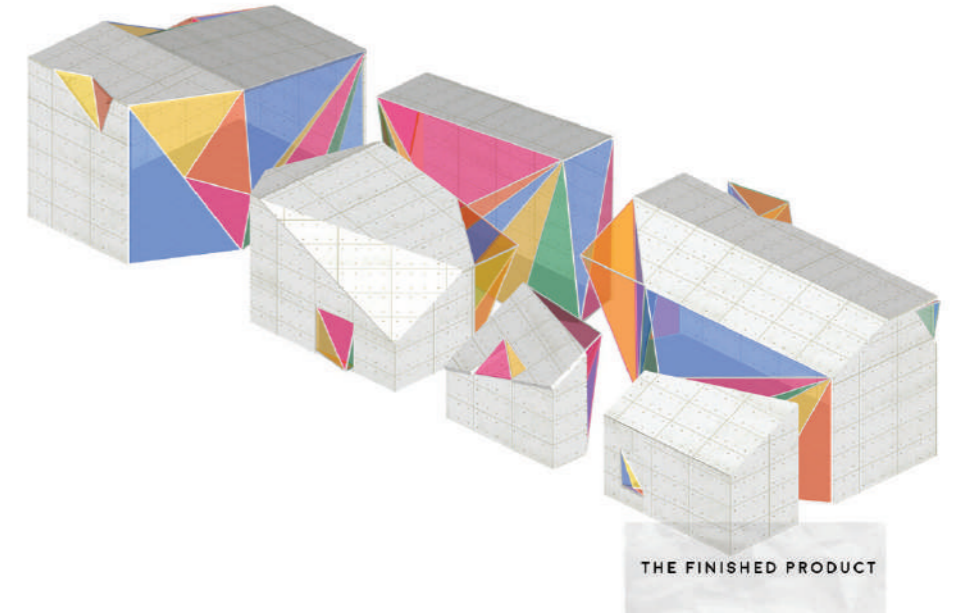
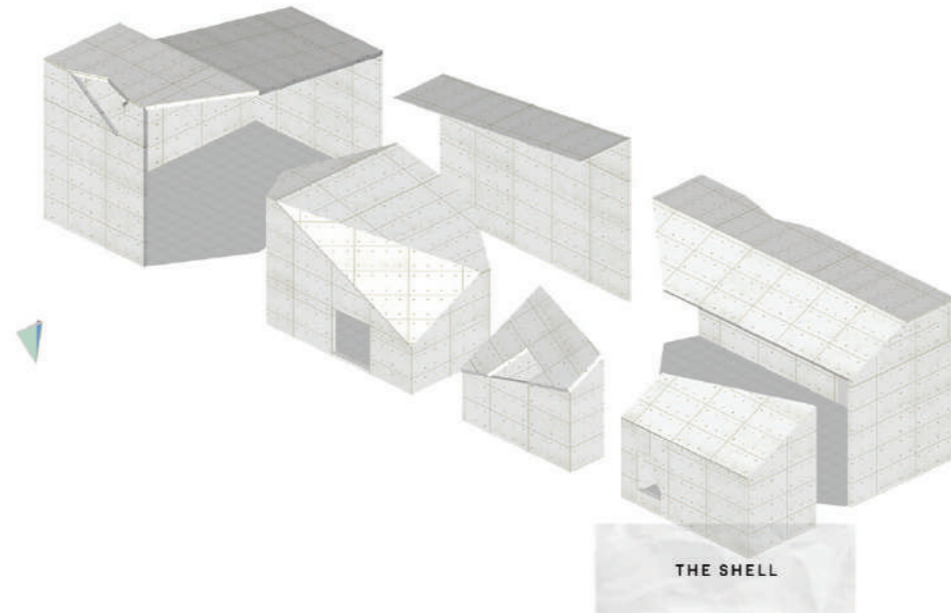
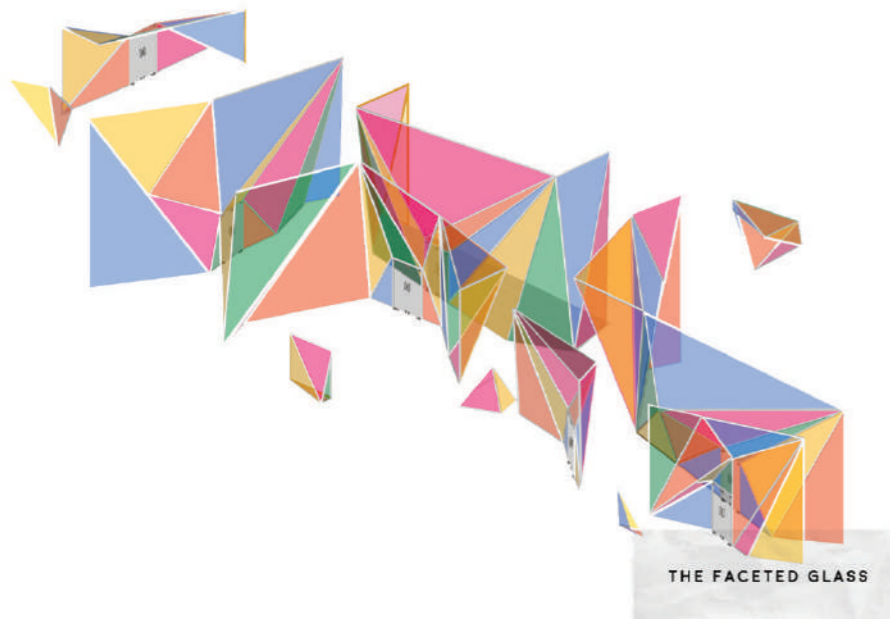
Taemane:

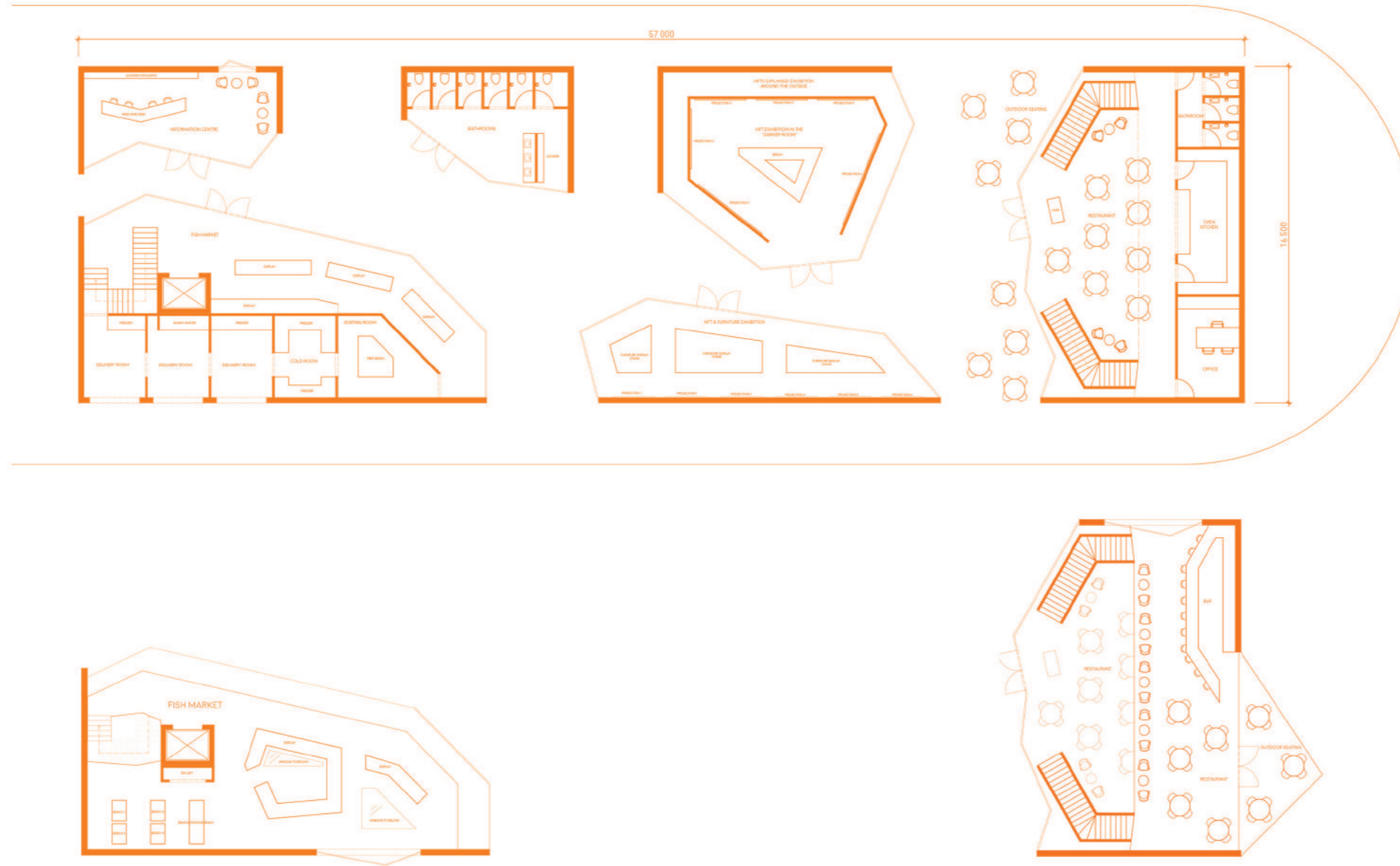
In Sesotho Taemane means “river of diamonds.” The structure itself is built like a cluster of diamonds sitting in water.



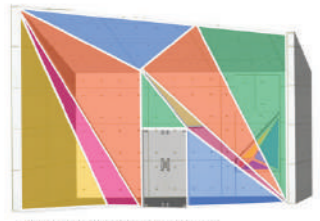








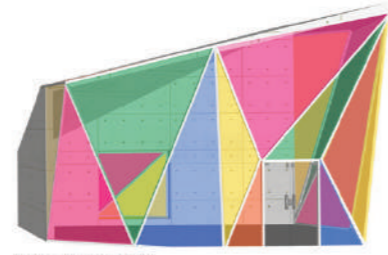




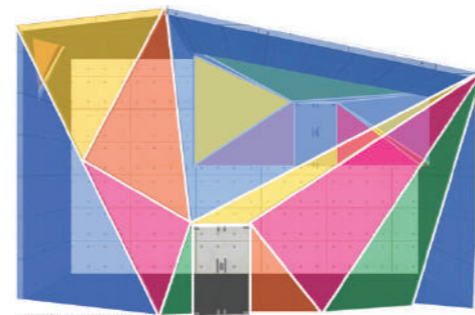
INFORMATION CENTER



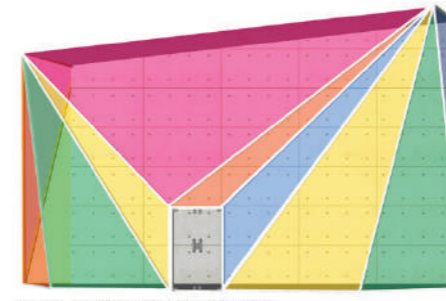
PUBLIC BATHROOMS



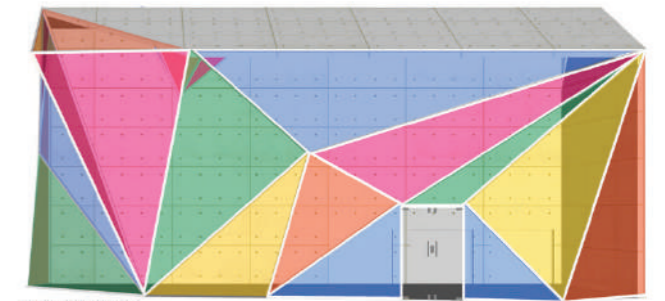
NFT EXHIBITION



RESTAURANT & BAR



NFT & FURNITURE EXHIBITION



FISH MARKET





# Antechamber

Florstore Reception Design

## Brief

An antechamber is a small room leading to a main one or in private homes, anterooms isolated the dwellers from the noise and odours of the street, and provided a space for visitors to wait while residents prepared themselves. Together with a partner you have been invited to design and create an inviting space where visitors can await further assistance at Florstore OnTrend's new showroom in Sea Point.

The goal is to think of a clever concept and design for The Antechamber whilst keeping current global design trends in mind. The Antechamber will showcase YOU as a designer, and will advertise your "brand". The Antechamber needs to be designed using finishes and fittings from suppliers showcased at; and promoted by Florstore OnTrend. All items must be in stock and immediately available, thus no imports. The aim of your design is to not only provide a space where visiting designers and homemakers feel at ease and comfortable enough to linger longer but also where they feel enveloped with inspiration, which in turn will feed into their own respective spaces.

## Concept

Florstore is a collective of interior suppliers that invites designers and homeowners alike to explore their store in the hopes of inspiring them. The reception area to a space such as this one needs to put this inspiration into practice and thus The Antechamber was created.

A pause between the outdoors and the store The Antechamber showcases how one can use products found in Florstore in one's own creation.



WALL LIGHT W594/595/596  
EUROLUX



WARM WHITE LED D158WW  
EUROLUX



ROLY POLY REPLICA TERRACOTTA  
ELEVENPAST  
R2895.00 x2



SUMA SIDE TABLE WHITE  
ELEVENPAST  
R1249.00



ROSE 2.5 SEATER MAYA CREAM  
SOFACOMPANY  
R13 999.00





DALMATA  
WOMAG



VERDE GUATEMALA  
WOMAG



TERAZZO-HH-VENEZIO  
TILETORIA



NORDIC POLAR OAK  
AZURA





# Casa Labia

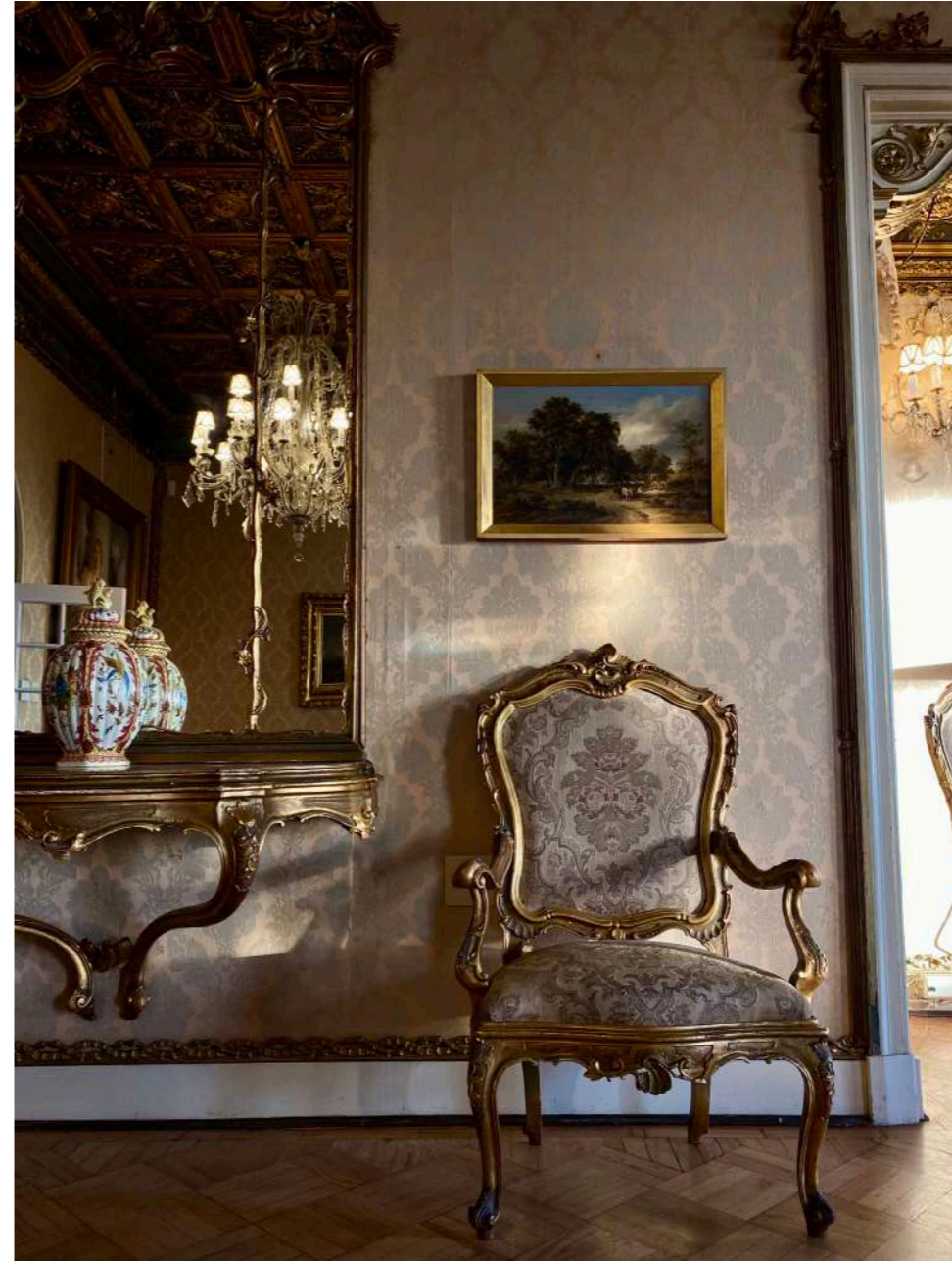
Photography

## Brief

After a three day photography crash course with, renowned South African photography, Inge Prins you are required to hand in the following; an interior photograph, an exterior photograph and a detail photograph - all taken at the Casa Labia in Muizenberg.

## Concept

All three of the final images were taken on an iPhone 11 and there were no edits applied to them whatsoever, not even a small crop or straighten. The goal of this task was to showcase the energy one can harness of a place whilst only using an phone.











# The Right Chair

Constitutional Hill 12th Chair Competition Entry

## Brief

The Constitutional Court, the guardian of the Constitution, has eleven chairs for the eleven judges who uphold, promote and defend our Constitution. Along with the judges, we the people are also guardians of the Constitution. That is why we are introducing the 12th Chair - to represent the people's seat of power as guardians of the Constitution, to express our values and from which we can speak boldly to those in power.

We encourage designs that re-imagine and re-invent the aesthetics of power and envision a chair in which all people will feel comfortable and empowered. The chosen chair will find its permanent place on Constitution Hill.

What would the 12th chair look like? How would one represent the role of the public through the design of a chair? Should this chair be made of a simple, durable material or should it be made ornate and gregarious in nature? What size should the chair be; and how should it make those who sit on it feel? What is the story behind the design of the chair? These are the types of questions you will need to ask yourself in the design of your 12th chair.

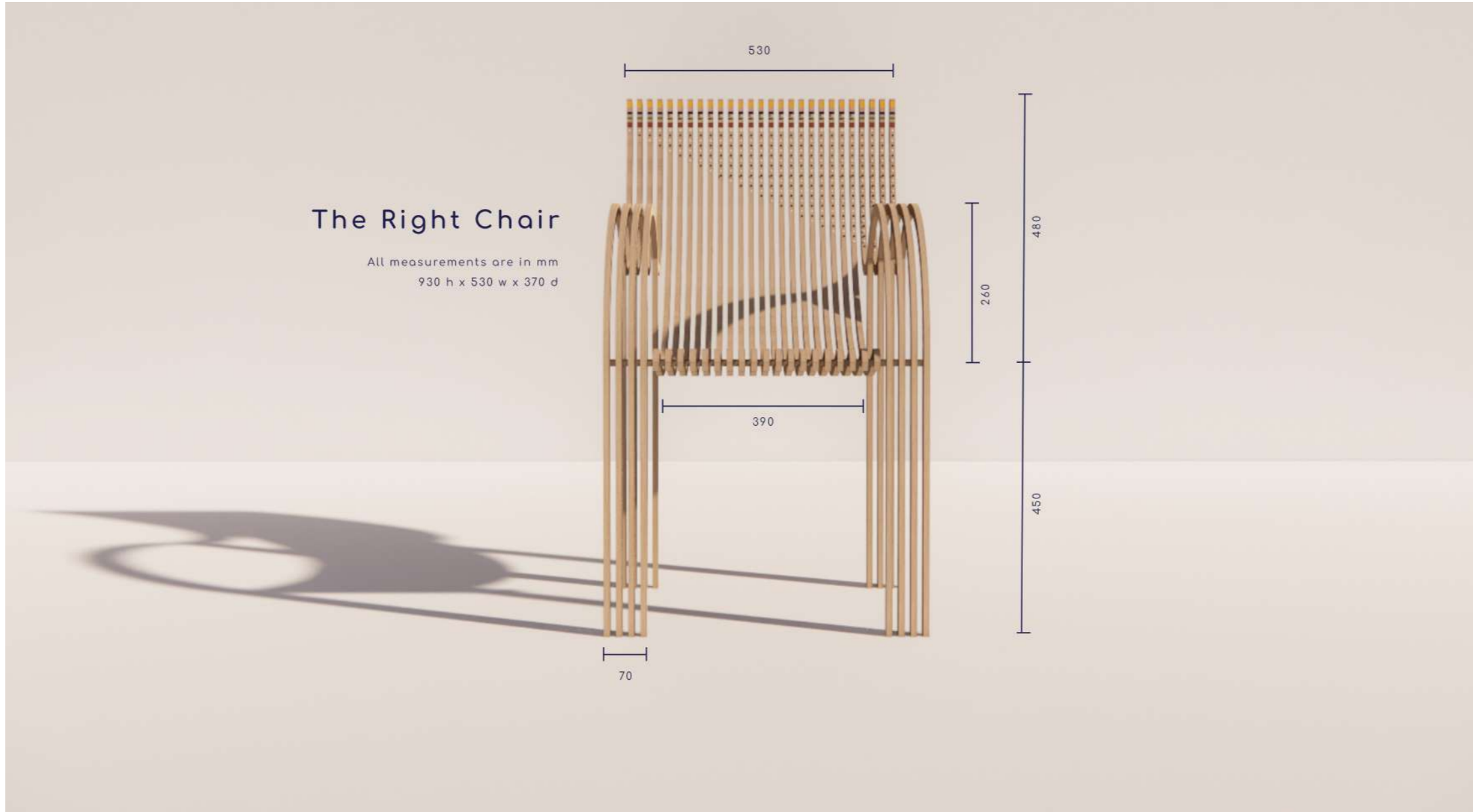
## Concept

The Bill of Rights is a cornerstone of democracy in South Africa. It enshrines the rights of all people in our country and affirms the democratic values of human dignity, equality & freedom.

*"Right-hand man"* n.

An indispensable or invaluable assistant; right hand. A position of honour or special trust.

Each piece of the chair represents one of our 27 human rights outlined in The Bill of Rights. The different pieces also represent our country's diversity and how we, the people, can come together to support one another with the common goal of upholding, promoting and defending our Constitution. Our rights support us as individuals as well as us as a nation. This chair will play its role as the 12th Chair - a right hand to the original 11 chairs - to do the same.





### The Right Chair

The Bill of Rights is a cornerstone of democracy in South Africa. It enshrines the rights of all people in our country and affirms the democratic values of human dignity, equality & freedom.



\*Right-hand man\* n.

An indispensable or invaluable assistant; right hand. A position of honour or special trust.



The chair is made out of 27 pieces, each representing one of our 27 human rights.







# The Flower Shop

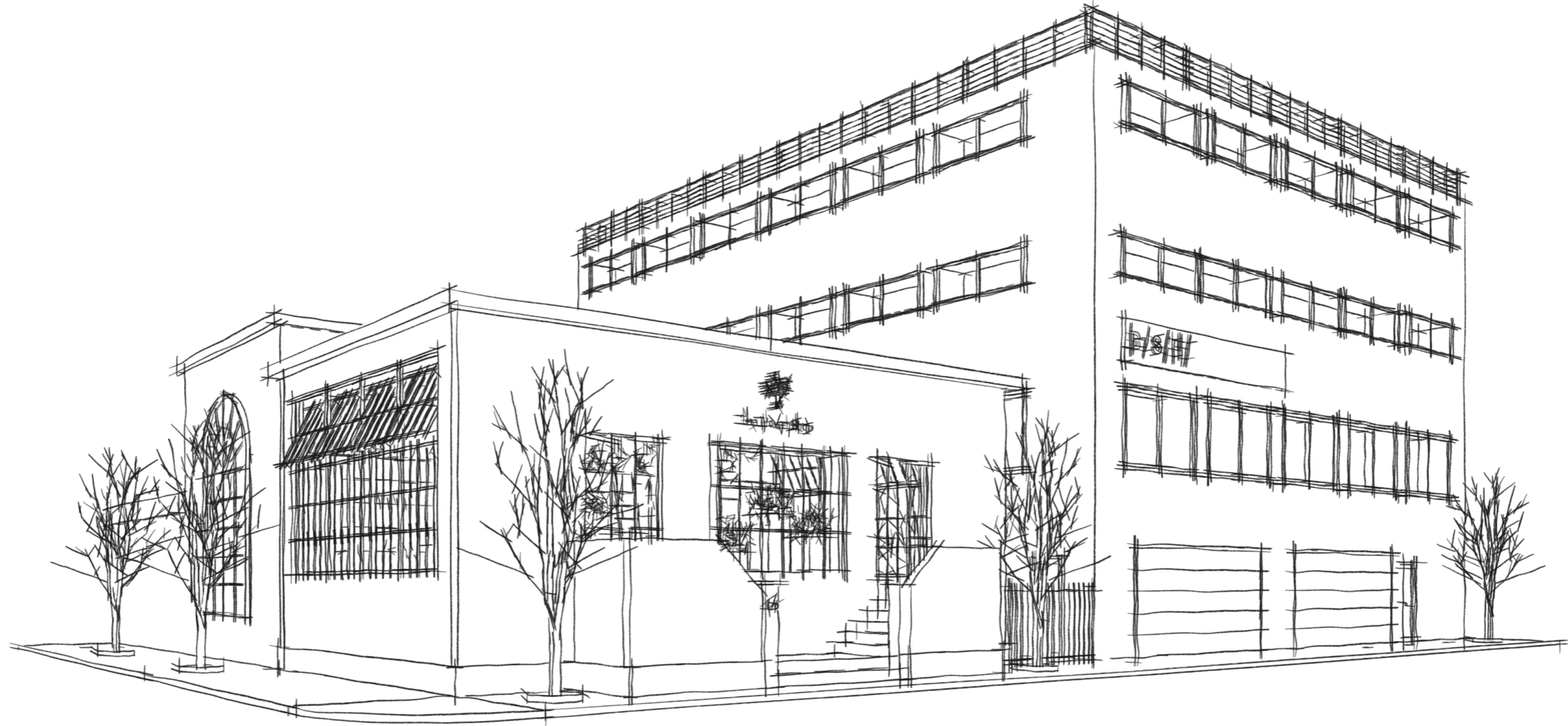
First Year Retail Design Project

## Brief

Create a successful store layout to suit the style of product and promote the brand to its full potential in order to maximize sales. This store should be a speciality store and the design must have an emphasis on being an experience with beautifully designed displays and storage that is both functional and unique.

## Concept

The Flower Shop on Bree Street is home to some of the Western Cape's most beautiful bouquets so it was important that it had a retail space to match. Offering an array of services from Design & Drink parties, general flower shopping and personalised floral features, it was important that The Flower Shop was functional as well as down right good looking. The goal was simplicity that incorporated key design features such as the custom point of sale and the striking glass & brass chandelier by Cristina Celestino. The space is embraced by feature vintage loft windows which incorporate character into this clean and sophisticated space .











# Apartment Cotton

First Project in First Year

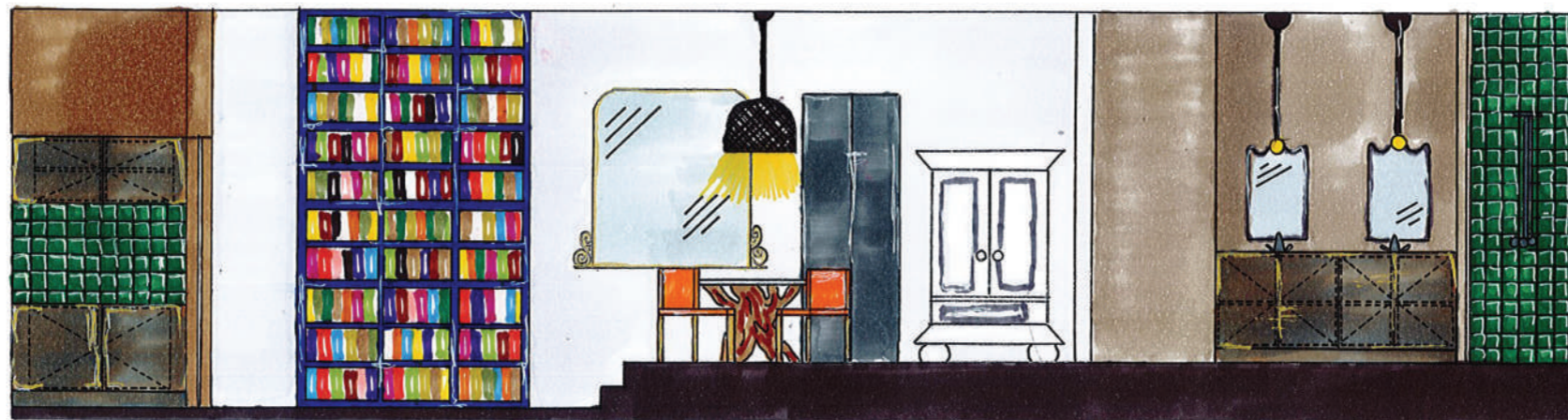
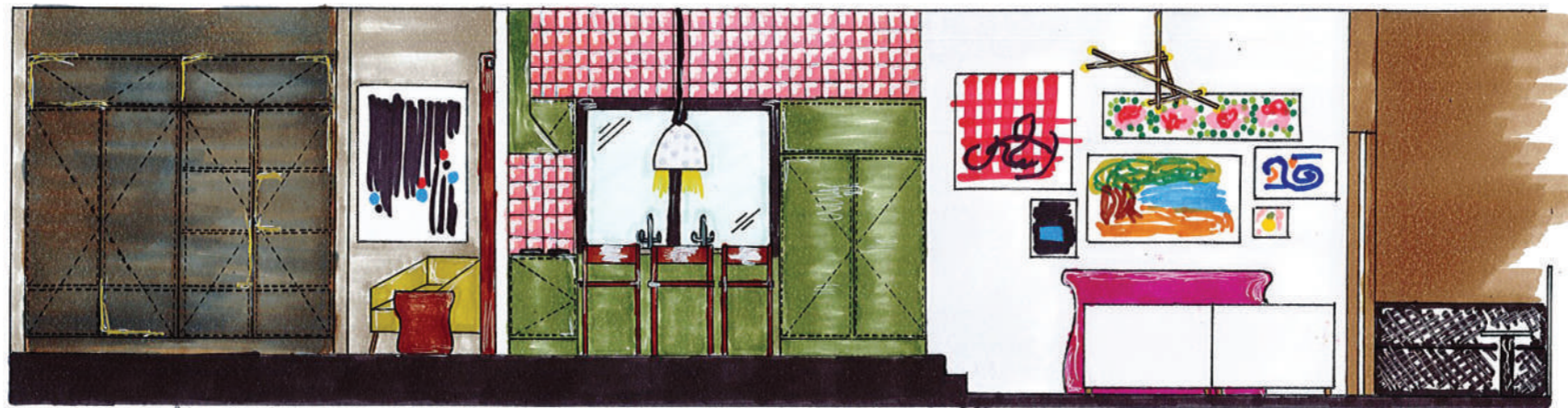
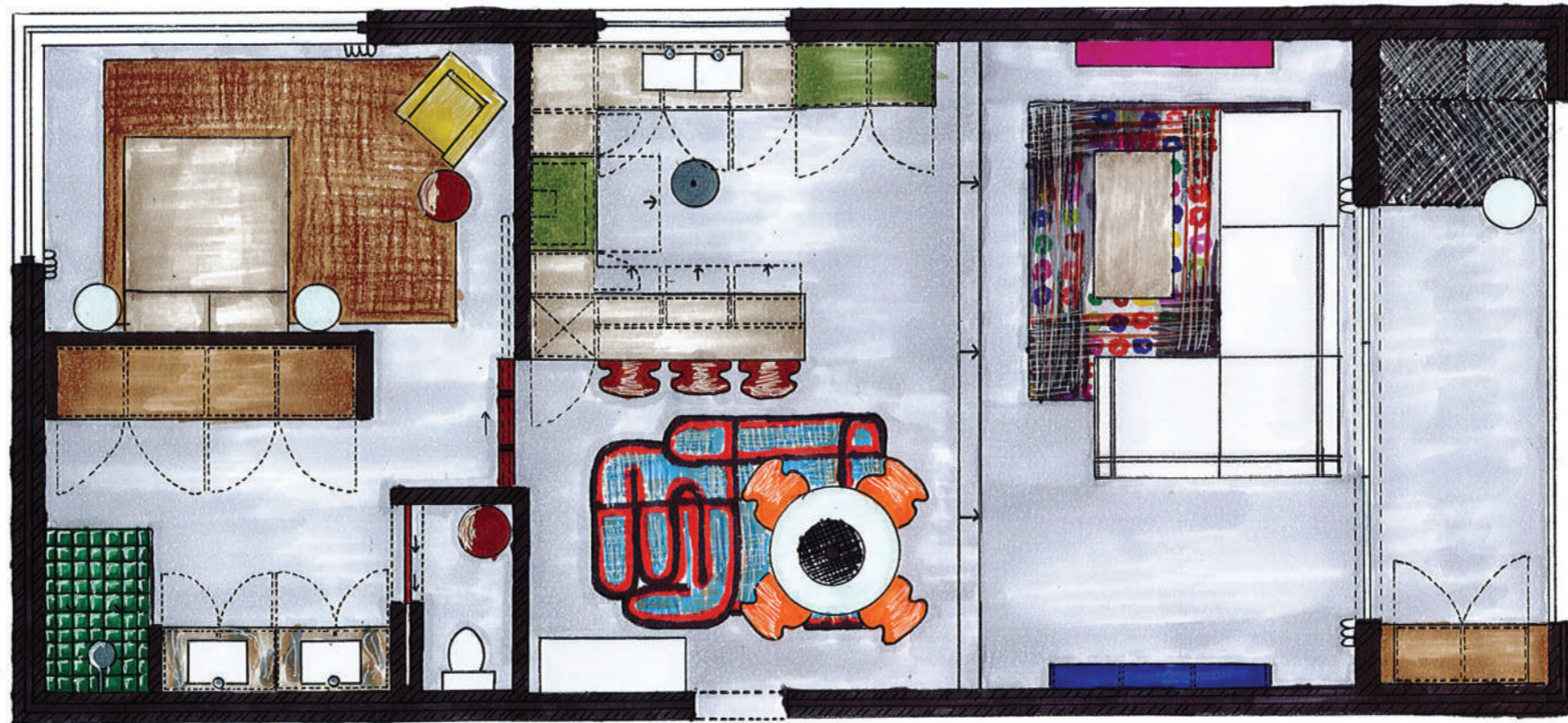
## Brief

Create a “capsule for living” to suit the client’s needs. This needs to be a space for living, eating, sleeping, washing and relaxing. The client ideally wants to use the space as a sanctuary – a place of escape after a hard day’s work. The client is a renowned local or internationally acclaimed interior designer or decorator of your choice. The designer should inspire you in all ways. Be sure to thoroughly research the client, their work and design style.

## Concept

Billy Cotton is a Brooklyn based designer who spent his training years studying industrial design at the Pratt Institute. Today Cotton’s multidisciplinary firm is known for its distinctive approach to design; he is able to craft modernist or elaborate interiors with equal fluency. A mix-and-match ethos is also seen in his lighting and furniture lines – a recent collection cited both Regency and Bauhaus as inspirations. Currently Cotton is the creative director of Ralph Lauren Home, a brand even more diverse than his own.













# Smudge

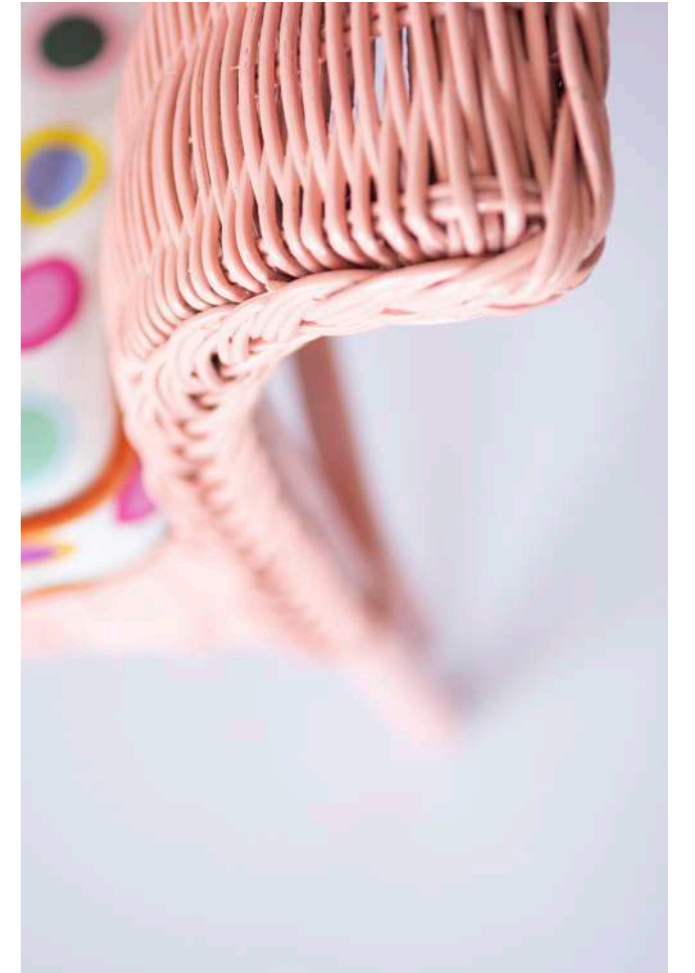
Upcycle Product Design

## Brief

Create a bespoke functional piece for the home with a beautiful 'story' behind it. The product should explore and celebrate the abundant stock of pre-owned pieces in either one's own home or in local stores around Cape Town. The piece must be unique, creative and globally trendworthy. Through timeless creativity, one will unleash the potential and originality of a new piece. Rescue items should be respected, either restored sensitively back to their former glory, or manipulated totally, creating a new function.

## Concept

The Smudge Chairs are a nod to the upcycling of my own name whilst simultaneously acknowledging that something as simple as a paint job has the ability to lift a design to new heights. This pair of rattan chairs have followed my family through various homes around Kwa-Zulu Natal for the last 22 years. Now upcycled in a bay coral by Dulux with new cushions upholstered in my own 'Dotty' textile design and an orange velvet piping they have found their forever home in a quirky Sea Point apartment.











# Surface

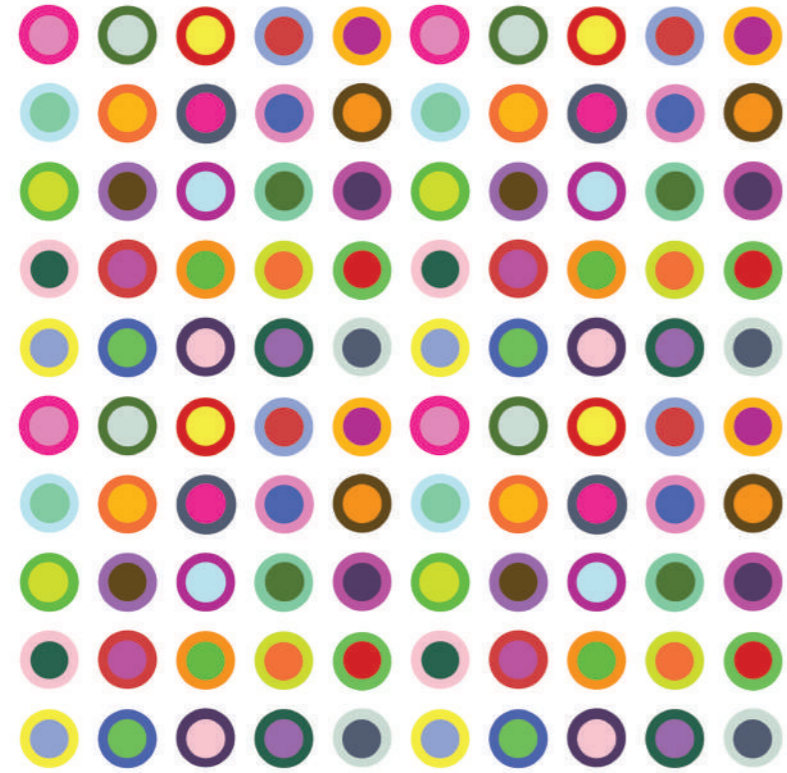
Pendant Light Product Design

## Brief

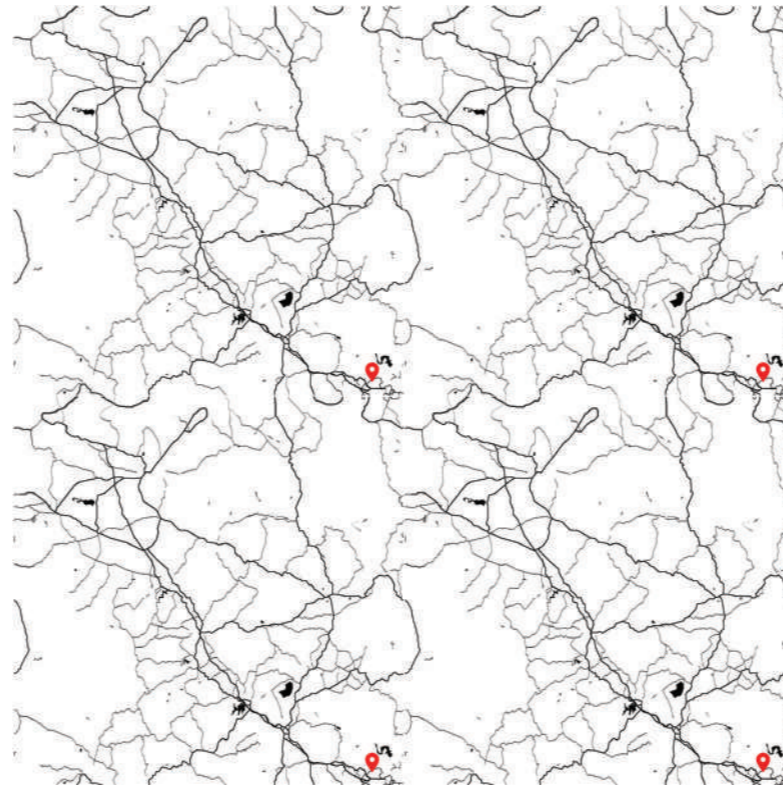
Surface design is any type of artwork (pattern, illustration, hand lettering, stenciling, etc.) made by a designer/artist that is intended to be applied to a surface to enhance its visual appearance and/or functionally. Each design is to measure 200mm by 200mm and need to be able to repeat .



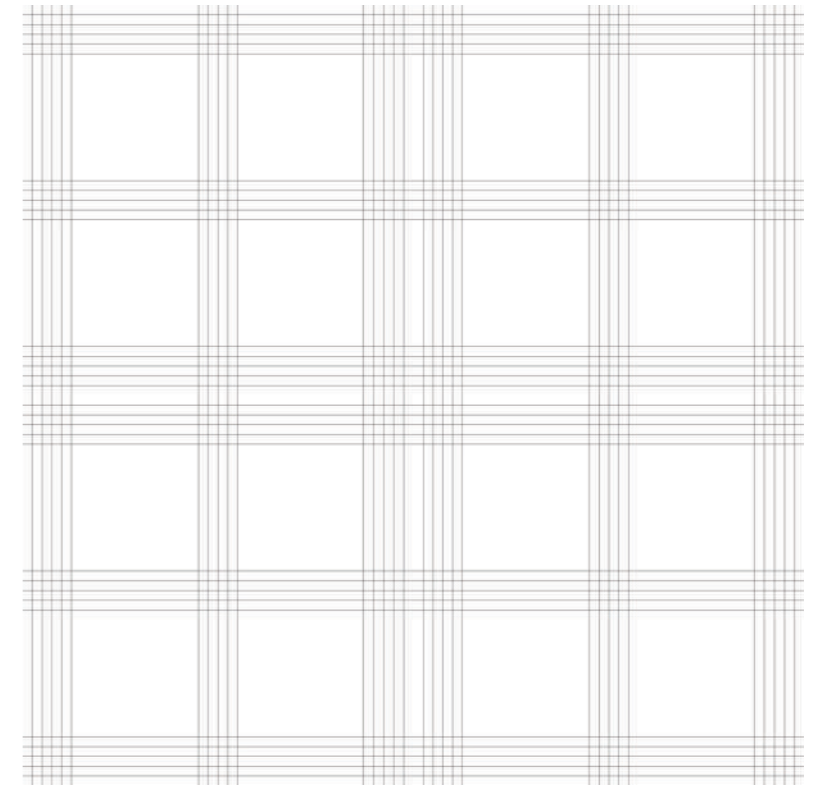




Dotty Repeat



Home Repeat



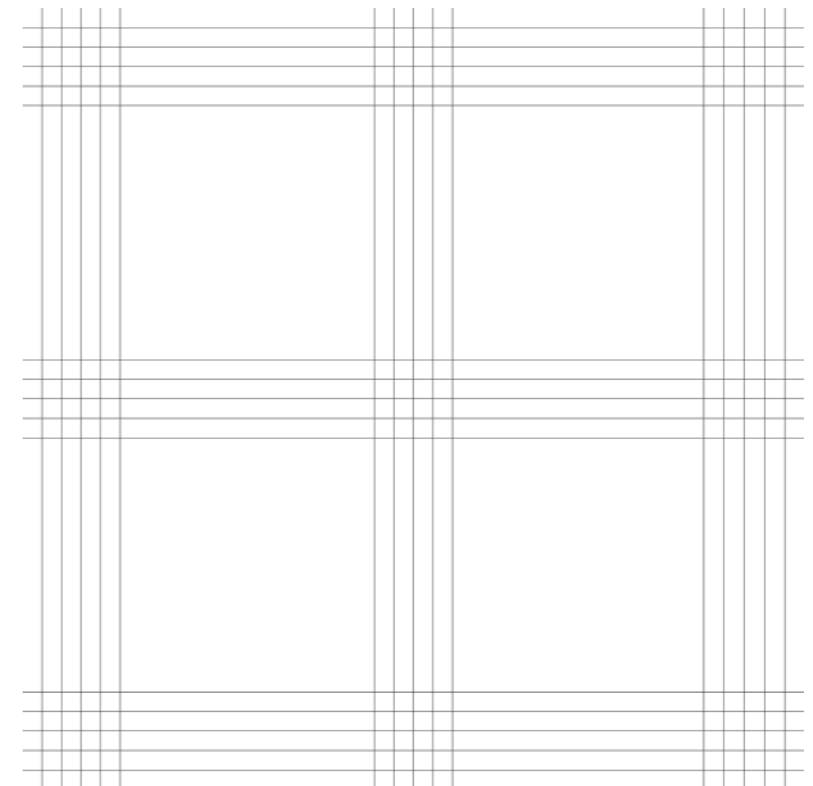
Check Mate Repeat



Dotty



Home



Check Mate





# Hideaway

Bar Joinery

## Brief

Design a freestanding drinks cabinet that includes the following: a bar fridge or wine cooler, drawers or storage of smaller items, storage for alcohol and glasses, an area for drinks pouring and an ice bucket and a small dustbin within unit. The maximum footprint 2500mm x 700mm and there is a height restriction of 2400mm and minimum height of 900mm.

## Concept

The Hideaway Bar is a drinks cabinet meant for incognito mode. It can be found hidden under the stairs or behind a wall ready to appear for after dinner drinks.











# The Light Room

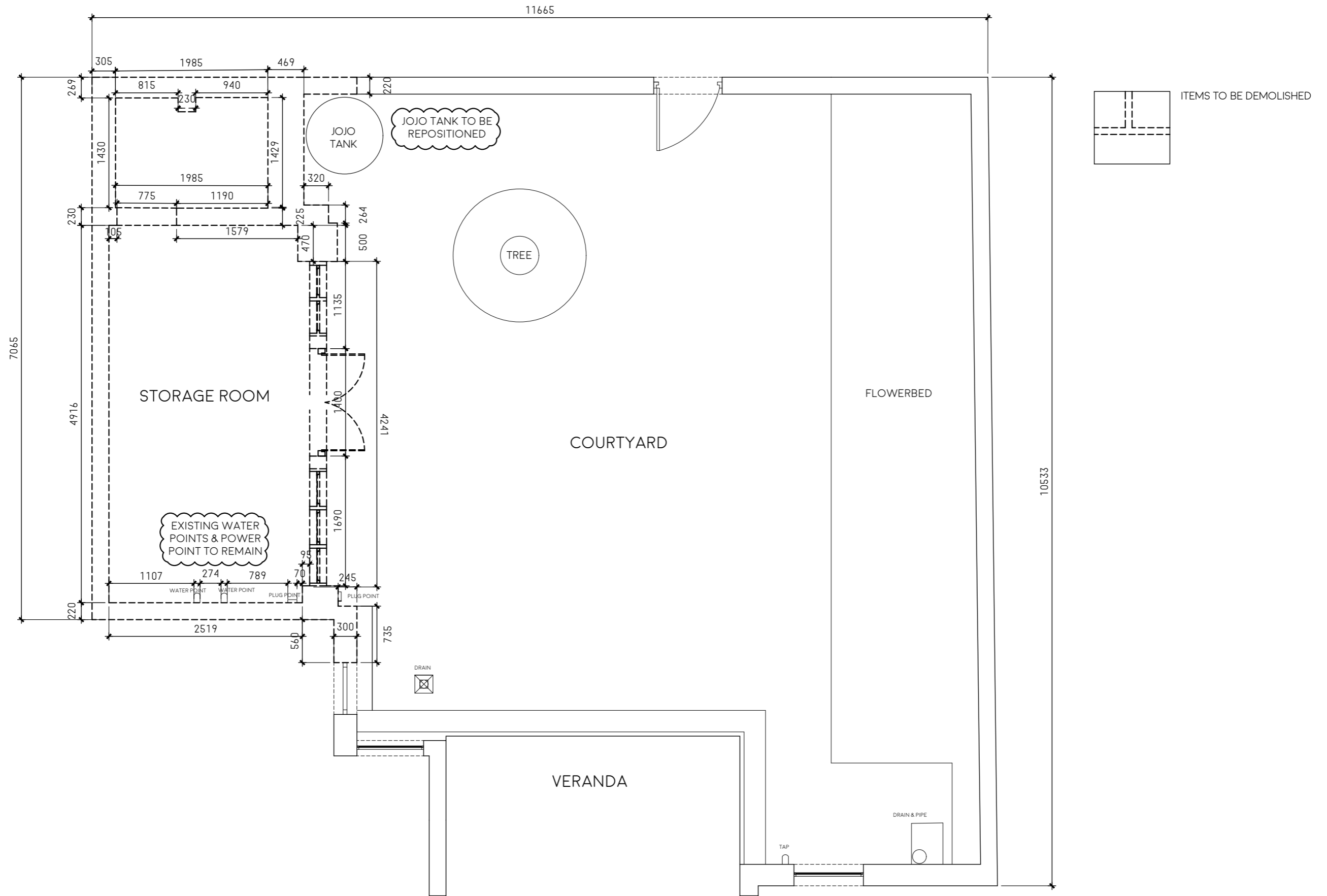
Drawing Package

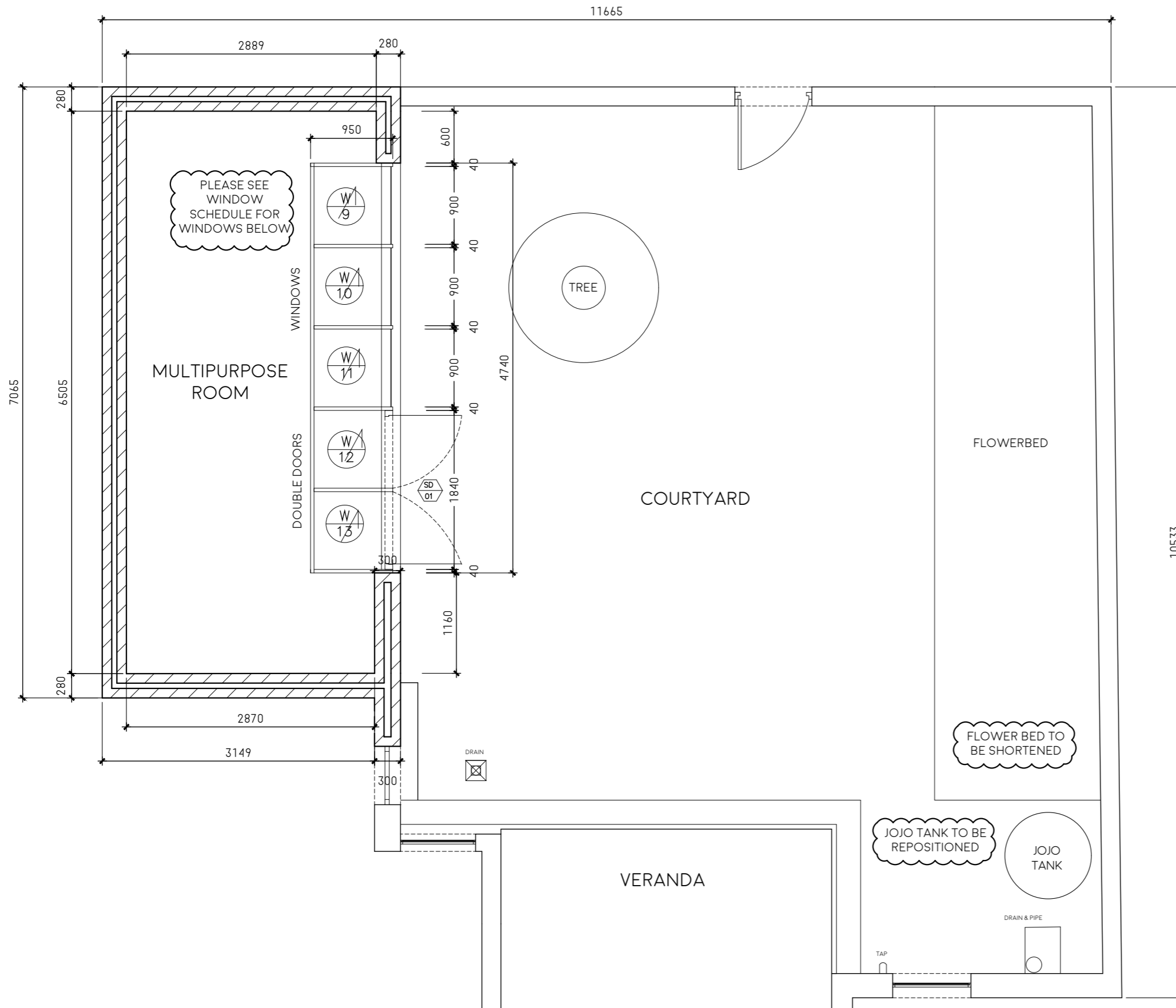
## Brief

You have been inlisted to renovate the materials room outside Design Time School of Interior Design. You will need the following drawings to form a working drawing package for your contractors on site: demolition plan, new build work plan, window and door schedules, floor finishes layout, data and electrical layouts, lighting layout, co-ordinated ceiling layout and general floor layout.

## Concept

The Light Room is Design Time School's multi-purpose room inspired by its founder and principal, Yoli Mitton. If you have spent as little as a minute at the school you will know the phrase, "Love and light!" and this room is a microcosm of this. The light element is brought through the windows which roll into sky lights and incorporate the courtyard. The love element is brought in by the sample station - where students can live out their passion for interior design - and of course the kitchen - the heart of any home. The Light Room is where students can go to collaborate on projects, play with their material's boards and bond over a cup of coffee. And so with that all said... sending you love and light!

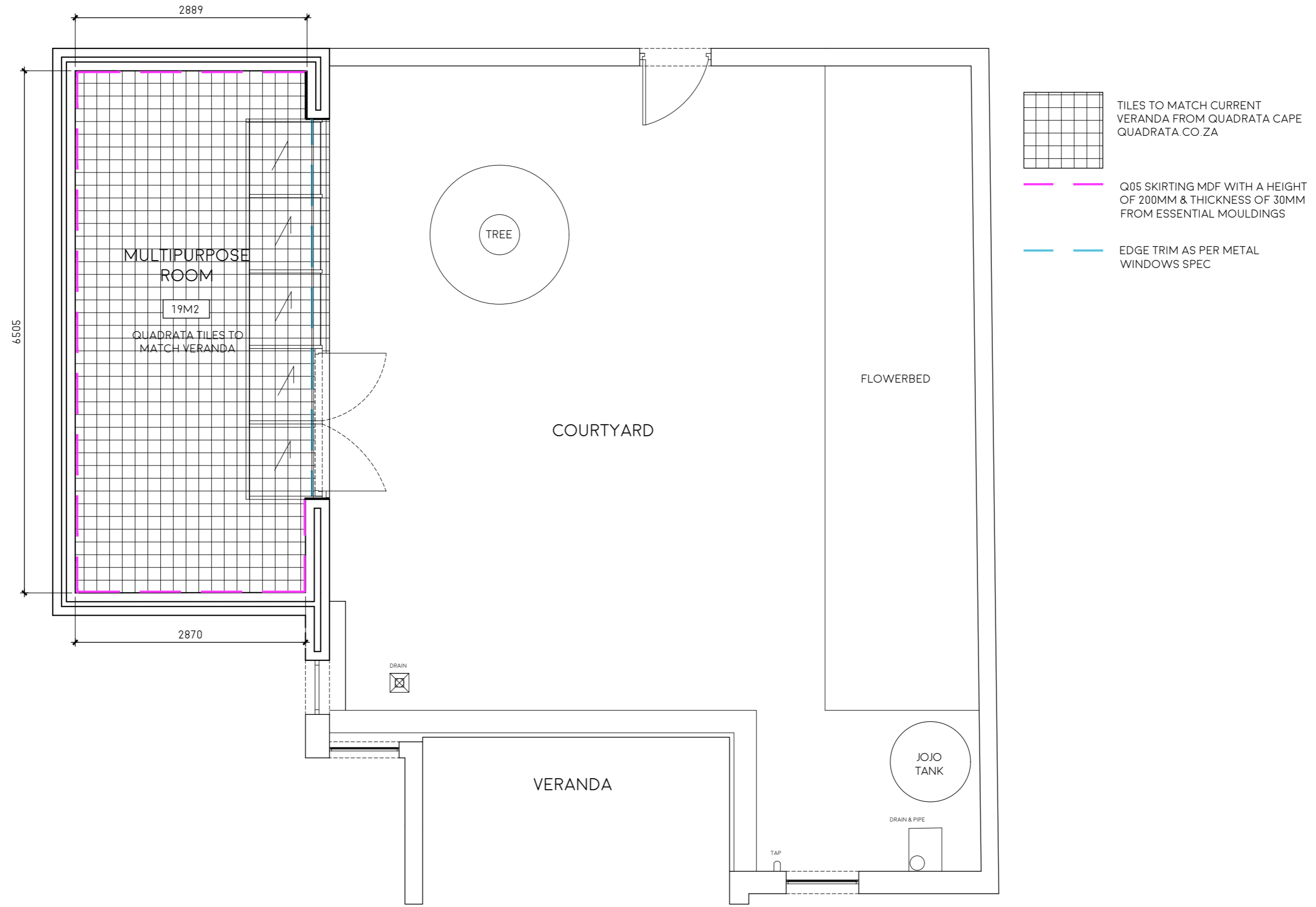


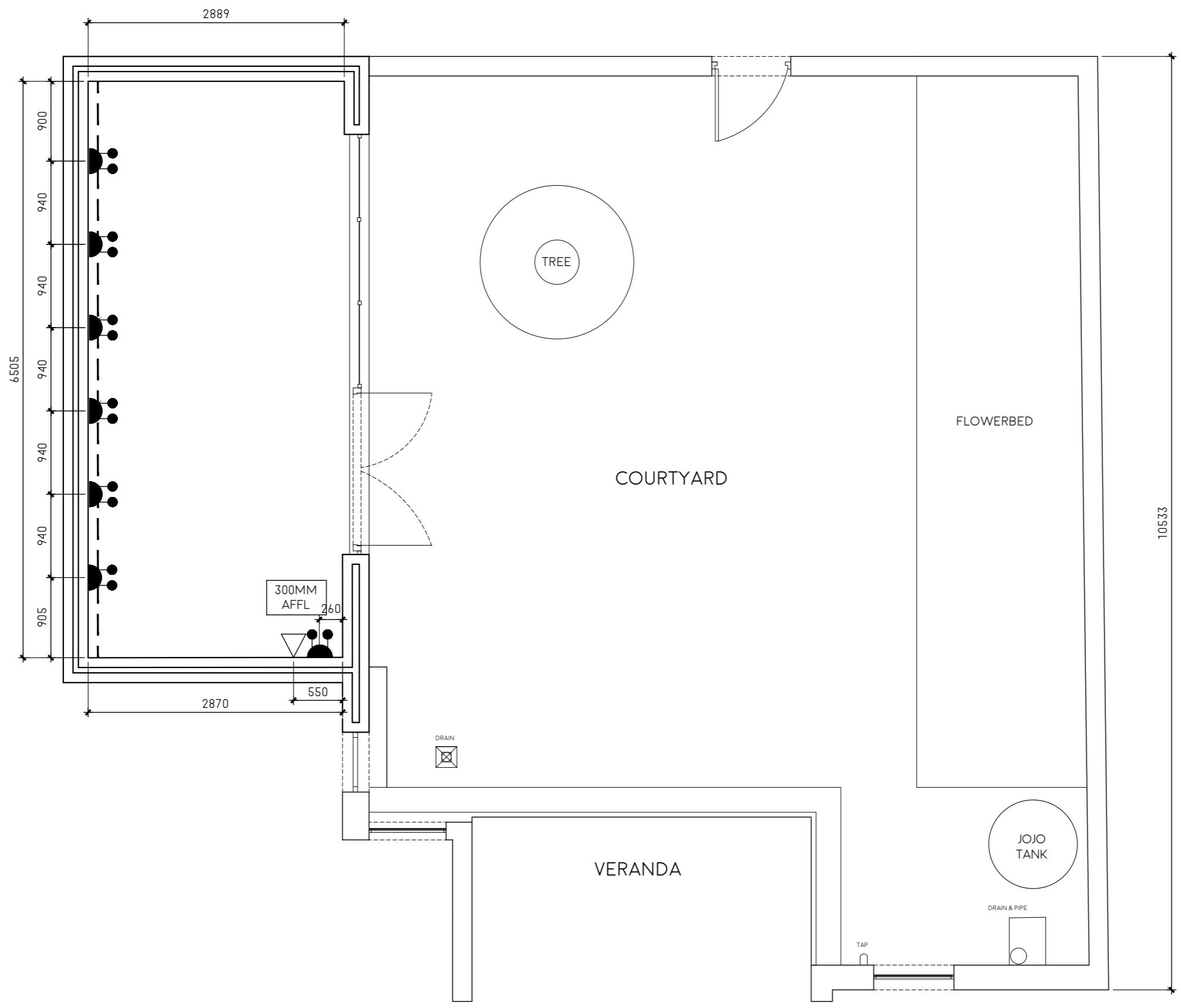


**NOTES:**



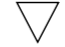
1. JOJO TANK TO BE MOVED TO THE OTHER SIDE OF THE COURTYARD AND THUS FLOWER BED TO BE SHORTENED IN ORDER TO MAKE SPACE.
2. LONG STEEL WINDOWS BY METAL WINDOWS TO BE PUT IN PLACE WITH SMALLER WINDOWS ABOVE THAT THEN CURVE INTO PANELS THAT GO INTO THE ROOF.
3. PUT IN PLACE A DOUBLE STEEL AND GLASS DOOR FOR ENTRY.

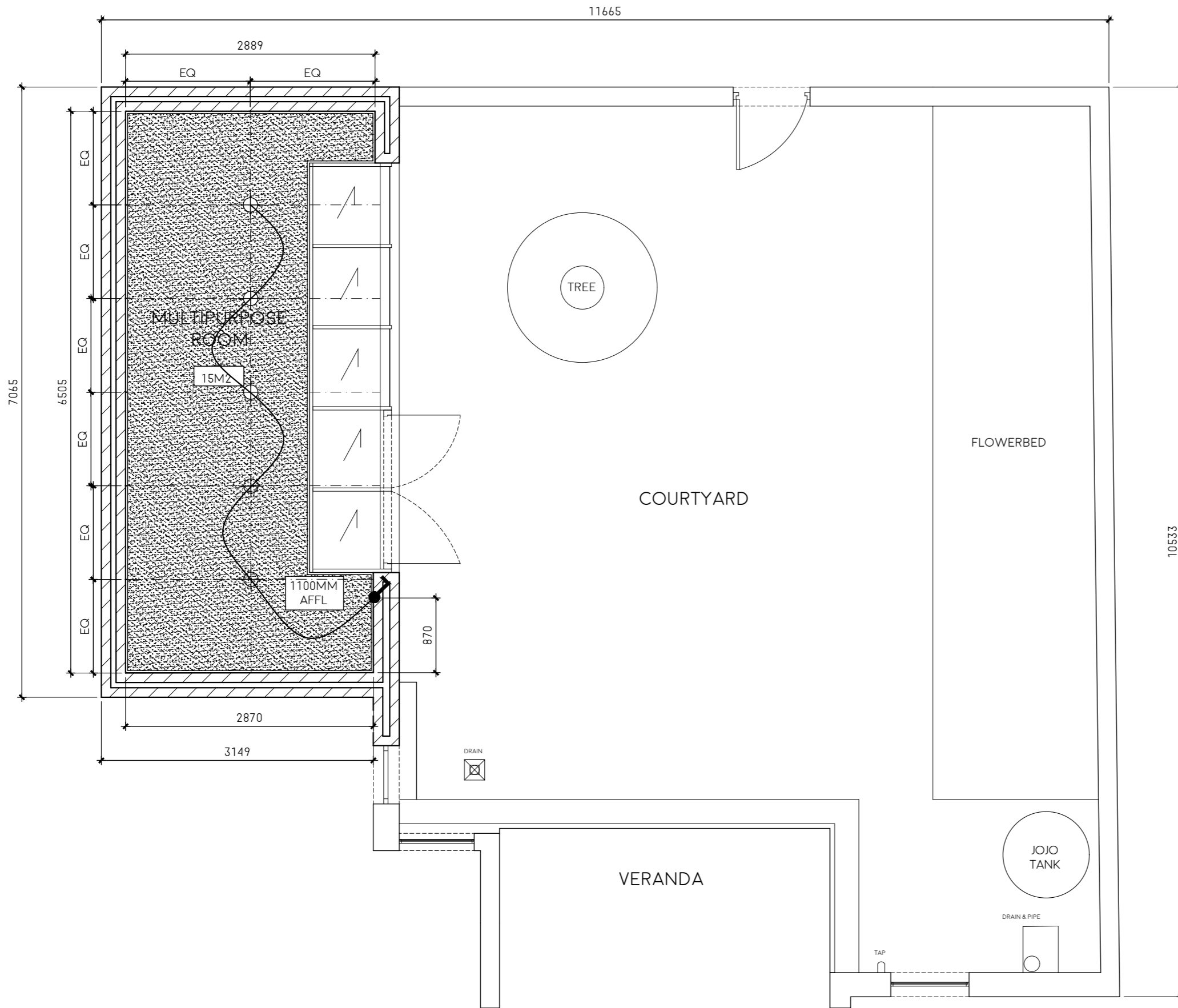






ELECTRICAL OUTLET LEGEND:

	PERIMETER POWER SKIRTING IN CHARCOAL
	VETI 2VC227 1 USB V-SLIM 4X4 SOCKET SWITCH - CHARCOAL FROM BUILDERS WAREHOUSE
	DATA POINT



LIGHTING LEGEND:

	<p>DOWNLIGHT SURFACE ROUND GU10 MATT BLACK JIN216 FROM EAGLE LIGHTING</p>
	<p>VETI 2VC1101 2X4 BELL PRESS SWITCH - CHARCOAL FROM BUILDERS WAREHOUSE</p>
	<p>CEILING WITH SHADOW LINE. TONGUE &amp; GROOVE TO MATCH THE CURRENT DESIGN TIME CEILING</p>



**METAL WINDOWS STEEL DOOR SCHEDULE**

DOOR TYPE	DOOR NUMBERS	TOTAL
A	GROUND FLOOR SD1	1
DESCRIPTION	10MM GALVANIZED STEEL FRAME FOR DOOR SWING REFER TO LAYOUT DRAWINGS	
SIZE	AS DIMENSIONED - CHECK ON SITE	
GLAZING	4 BRAY TONIGHTER GLASS ALL FRAMES TO BE GALVANIZED BLACK	
IRONMONGERY	HANDLES AS PER MANUFACTURER SPEC	
NOTES AND SPECIAL CONDITIONS	HANDLES MOUNTED AS PER MANUFACTURER SPEC SWINGING SIDE TO BE CHECKED ON SITE BEFORE INSTALLATION	

**METAL WINDOWS LONG STEEL WINDOWS SCHEDULE**

WINDOW TYPE	WINDOW NUMBERS	TOTAL
B	GROUND FLOOR W1, W2, W3	3
DESCRIPTION	10MM GALVANIZED STEEL FRAMES	
SIZE	AS DIMENSIONED - CHECK ON SITE	
GLAZING	2 BRAY TONIGHTER GLASS ALL FRAMES TO BE GALVANIZED BLACK	
IRONMONGERY	AS PER MANUFACTURER SPEC	
NOTES AND SPECIAL CONDITIONS	SEE NEW BLAD PLAN FOR HOW THE WINDOWS AND DOOR LINK AS THE STEEL FRAME IS NOT DOUBLED	

**METAL WINDOWS SMALL STEEL WINDOWS THAT OPEN SCHEDULE**

WINDOW TYPE	WINDOW NUMBERS	TOTAL
C	GROUND FLOOR W4, W5, W6, W7, W8	5
DESCRIPTION	10MM GALVANIZED STEEL FRAMES	
SIZE	AS DIMENSIONED - CHECK ON SITE	
GLAZING	2 BRAY TONIGHTER GLASS ALL FRAMES TO BE GALVANIZED BLACK	
IRONMONGERY	AS PER MANUFACTURER SPEC	
NOTES AND SPECIAL CONDITIONS	THESE ARE PLACED ABOVE THE LONGER DOORS AND WINDOWS AND OPEN TO VENTILATE THE SPACE	

**METAL WINDOWS CURVED STEEL WINDOWS THAT GO INTO THE ROOF SCHEDULE**

WINDOW THEN CURVES ROUND AND GOES INTO THE ROOF

WINDOW TYPE	WINDOW NUMBERS	TOTAL
D	GROUND FLOOR W9, W10, W11, W12, W13	5
DESCRIPTION	10MM GALVANIZED STEEL FRAMES	
SIZE	AS DIMENSIONED - CHECK ON SITE	
GLAZING	2 BRAY TONIGHTER GLASS ALL FRAMES TO BE GALVANIZED BLACK	
IRONMONGERY	AS PER MANUFACTURER SPEC	
NOTES AND SPECIAL CONDITIONS		



**Q:** What is your favourite interior design related word?

**A:** *Zhuzh*. Because everything needs to be screwed with.

- Billy Cotton