



Alexa Coetzee
Design Time portfolio

Index page

First year

01 - Co.Create

02 - Airstream Trailer

Second year

03 - Ceasarstone, The Outlook

04 - PG Bison, The Pillar

05 - HomeSpun

06 - Element5

Co.Create

24 Dreyer Street,
Ground floor,
Claremont.



25.
08.
20.

01.

Concept

My main focus was to create a free flowing space that would offer a comfortable and open environment, encouraging communication. With the use of glass around the meeting rooms and offices it provides privacy but does not block off the space. The user experience is very important as well as the ease of use of the space because the purpose of an office is to be collectively productive.

Brief

“ A COMMON GROUND FOR UNCOMMON PEOPLE ”

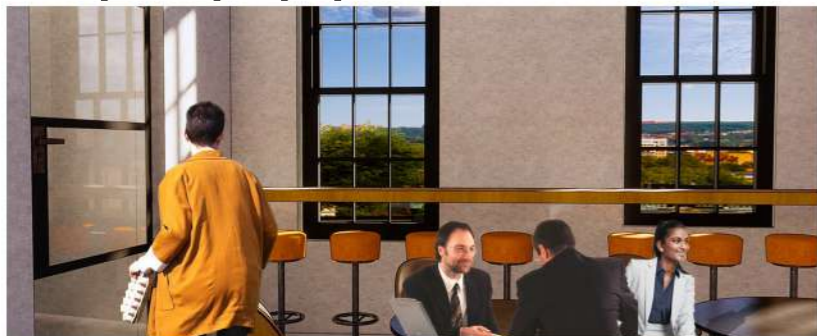
CO.create has appointed YOU to design an exclusive, daring and playful, members only work environment where like-minded, creative professionals; Architects, Interior, Graphic, Textile and Product designers alike, share this creative space. You will need to work within the constraints of a moderate budget for this project. Think of cost effective, durable materials, fittings and finishes when designing the space.



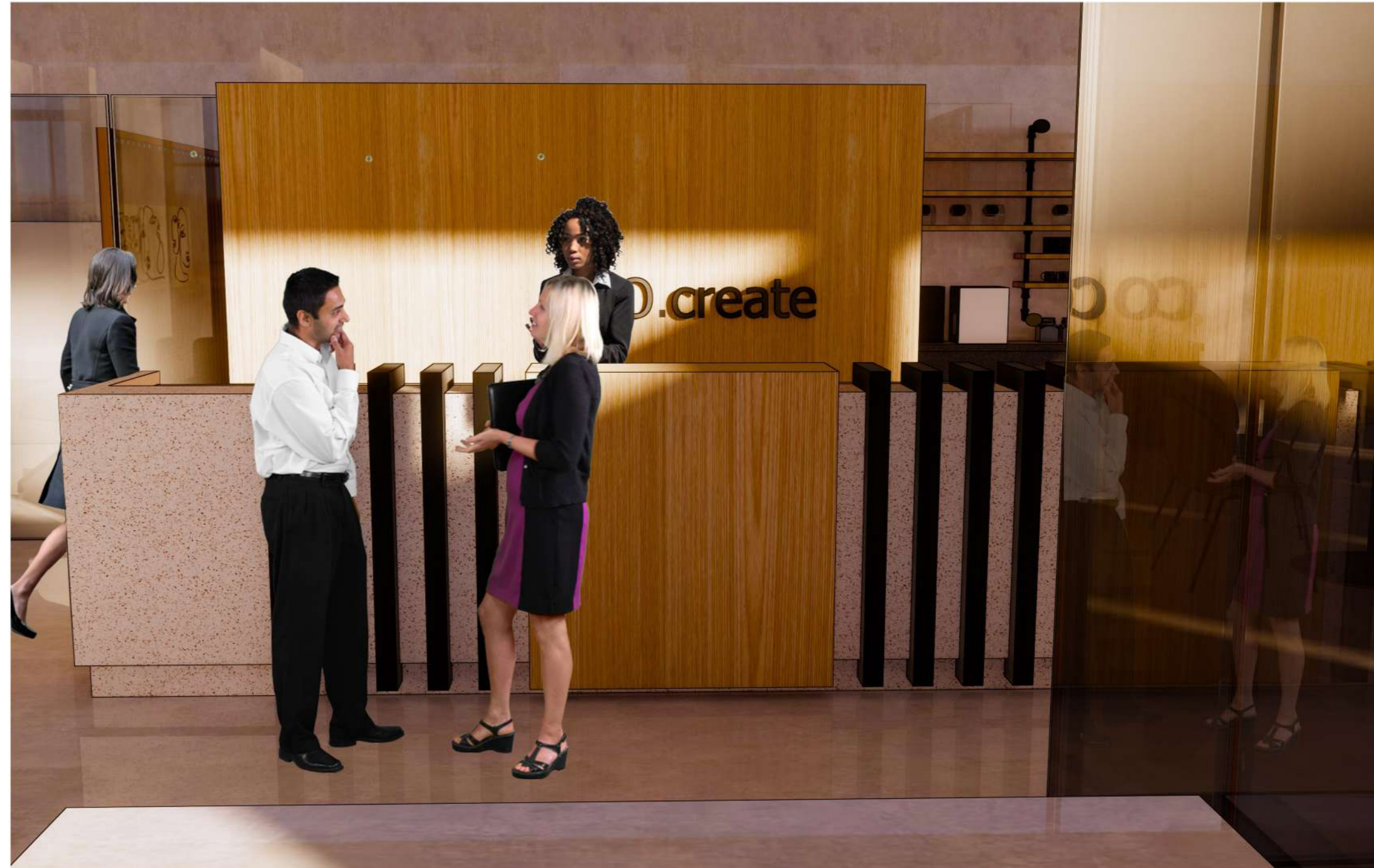
Office space perspective



Close up office space perspective



Break seating area perspective



Reception perspective



Private pods perspective



Meeting office space perspective



Waiting room perspective



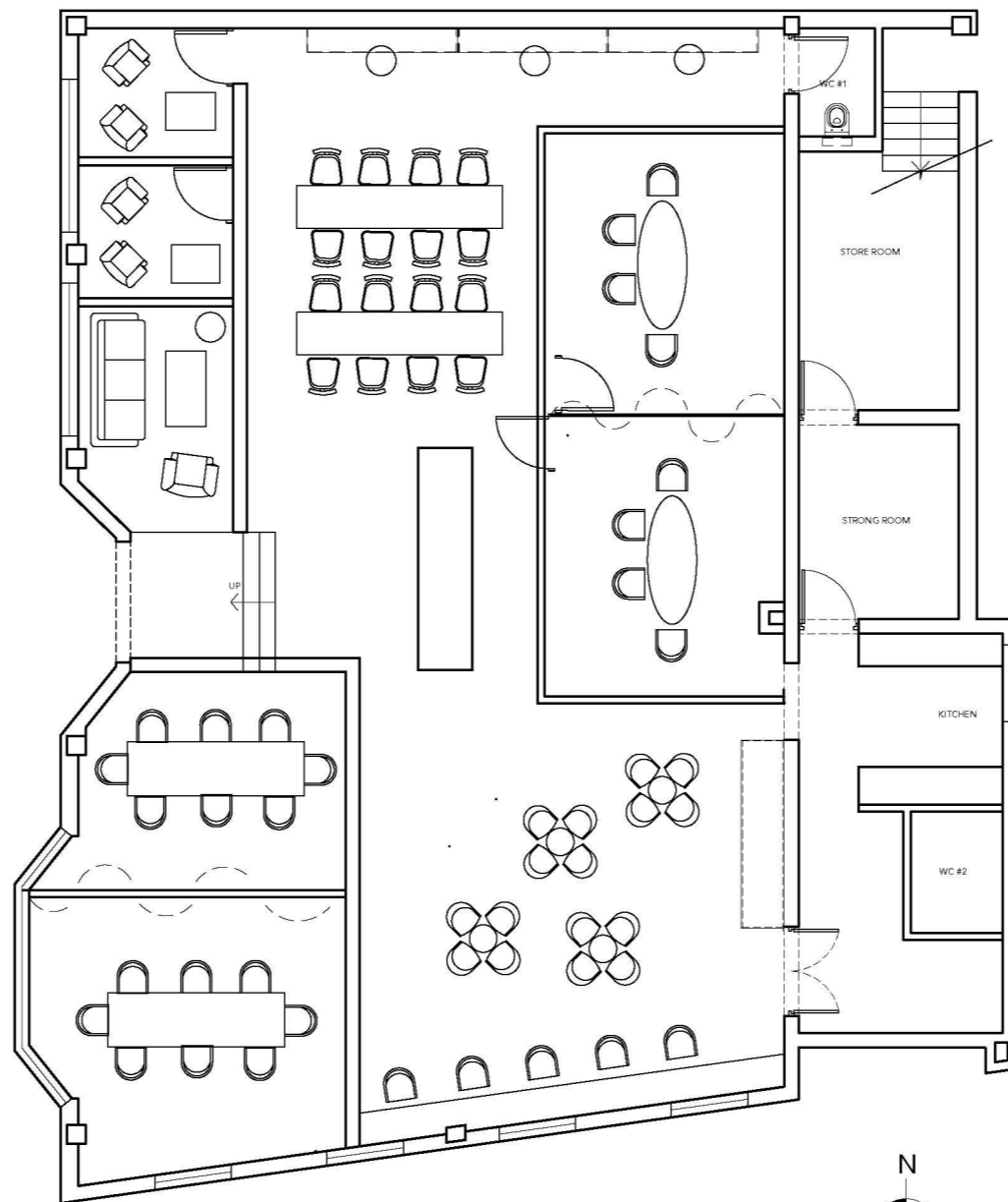
Century syncro - Stiles



Metropole cement - Stiles



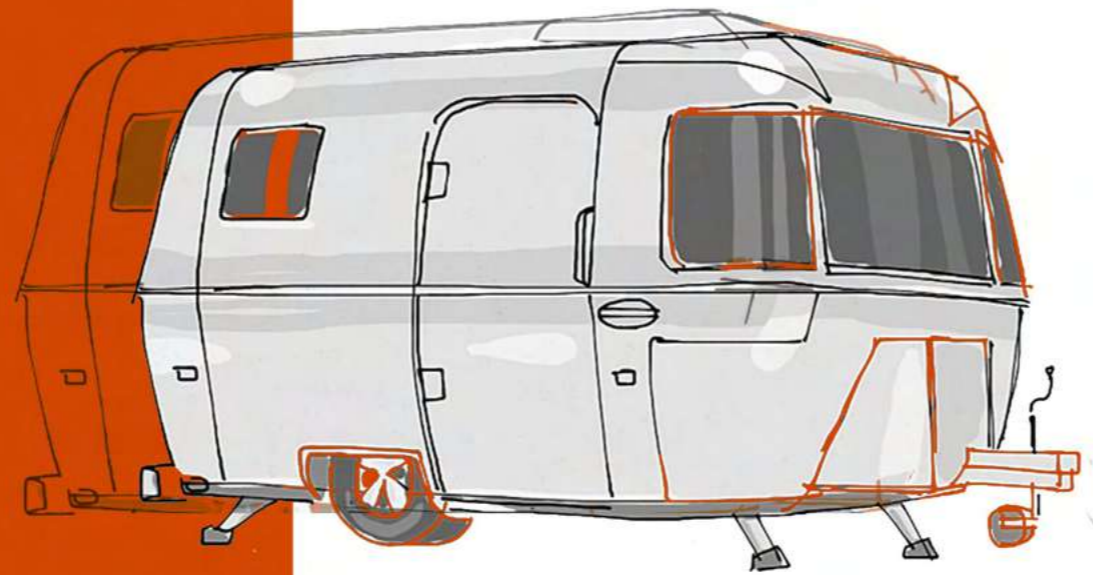
Antiquity Dijon - Hertex



GROUND FLOOR PLAN
SCALE 1:100

Airstream

The hills of
Switzerland



09.
11.
20.

02.

Concept

With the main aim being affordability and adaptability the space I have designed has been specially considered with the use of materials and how the space transforms. The space allows for more than one use in areas which are traditionally not adaptable.

Brief

YOU have been tasked with designing and conceptualizing an inspiring **AIR STREAM TRAILER** with an international aesthetic. This air stream trailer 'capsule' seeks to attract a new age, digitally connected, style savvy traveller, and trendy style, while still providing the opportunity to see the world at your own pace. Tight spatial planning and a clever use of materials is required to ensure a successful design. With the main aim to provide alternative accommodation to your standard hotel and will tick all the boxes regarding affordability.

□

□

□



Reference images



Interior perspective



Whit Vinyl- TLC flooring



Mattise smoke - Hertex



Mattise spruce - Hertex



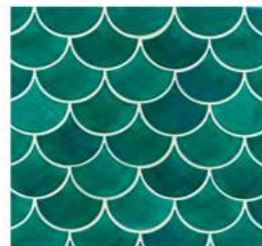
Bedroom perspective



Lounge seating perspective



Neolith - Abu dubai white



Douglas Jones - teal fish scale



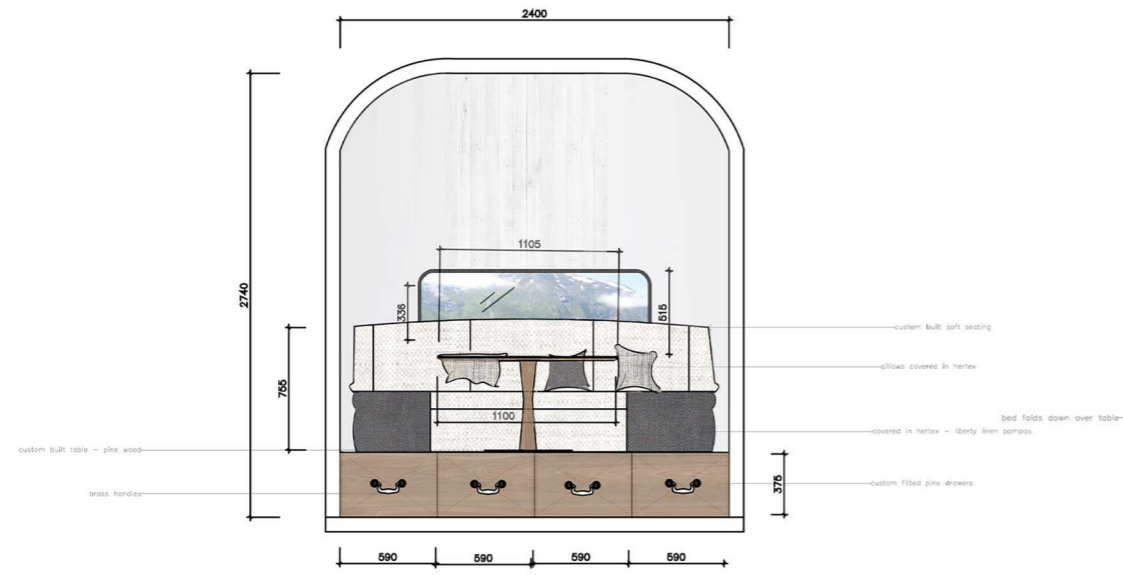
Oggie flooring - invisible oil



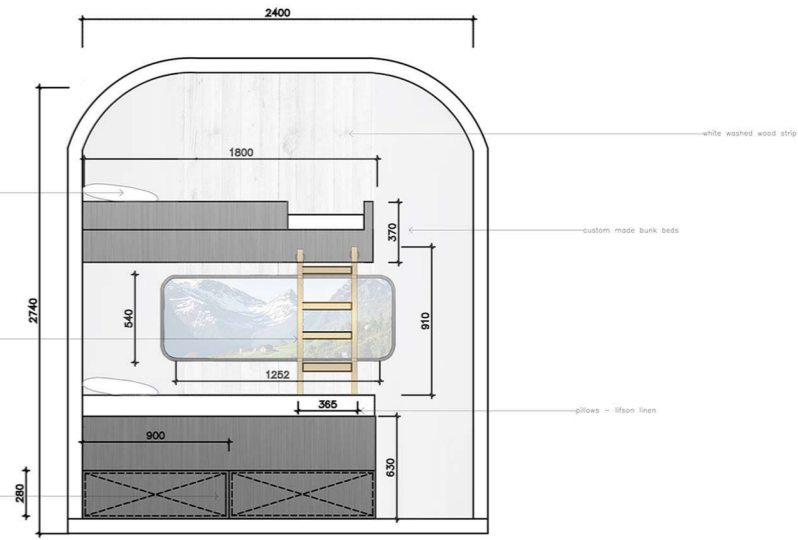
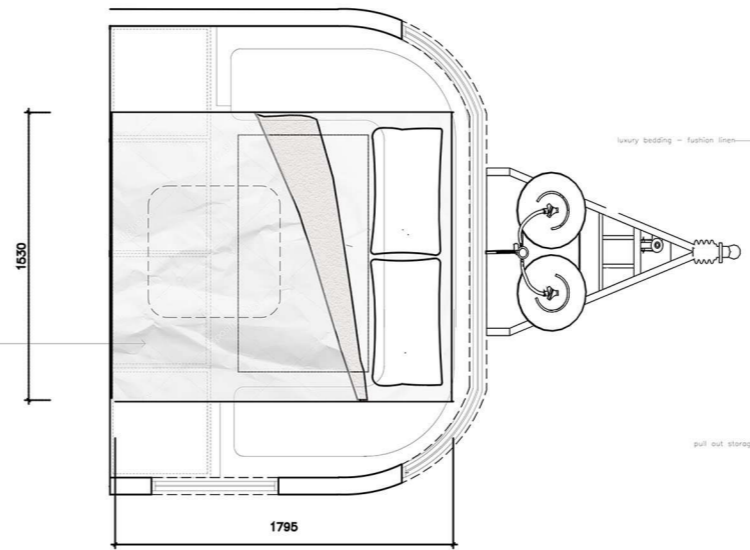
Bathroom perspective



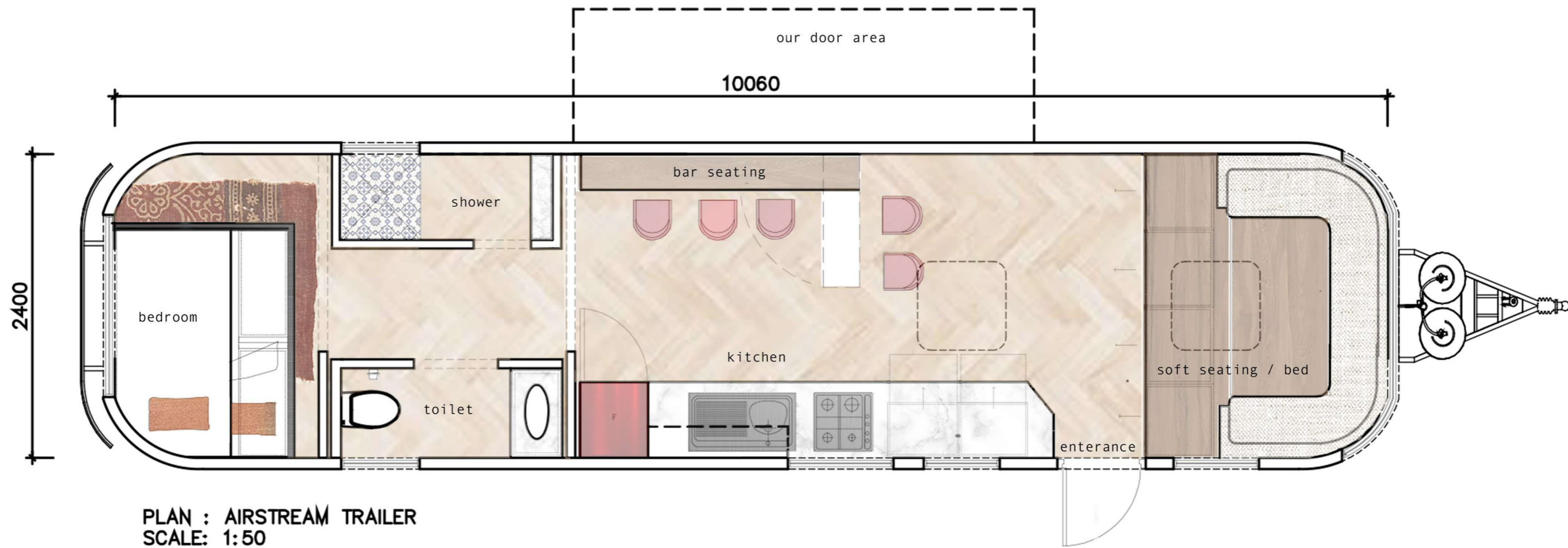
Bathroom perspective angle two



ELEVATION CC : AIRSTREAM TRAILER
SCALE: 1:50



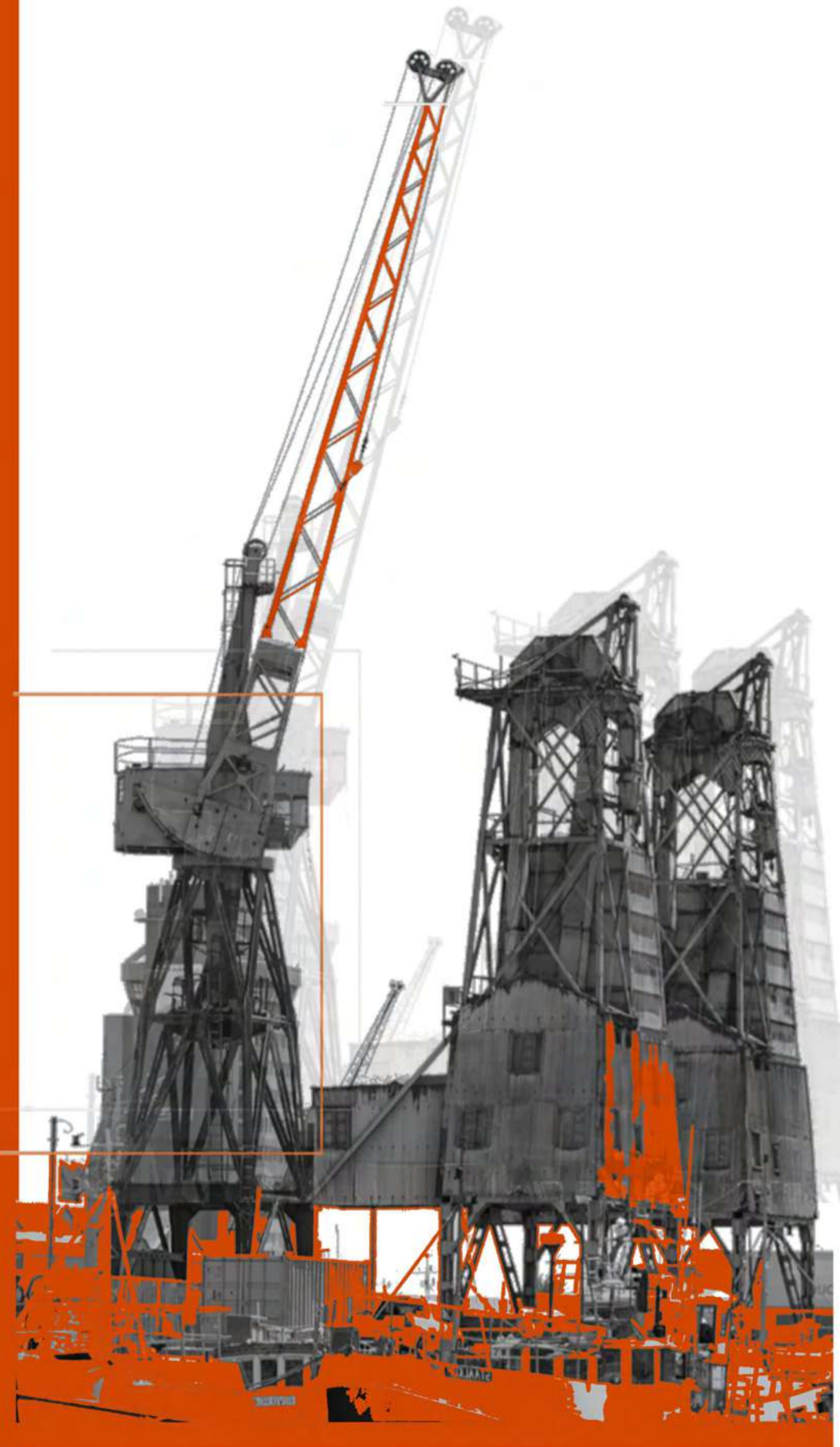
ELEVATION CC : AIRSTREAM TRAILER
SCALE: 1:50



PLAN : AIRSTREAM TRAILER
SCALE: 1:50

Caeserstone

Collier jetty fish quay Alfred basin,
Victoria and Alfred Waterfront,
Cape Town.



10.
05.
21

03.

Concept

The Outlook

The direct translation of outlook is a space offering a view, a view of a particular place or a person's point of view. With this space highlighting its history of the pier with the surrounding views of the iconic Robben Island and Table Mountain it gives its visitors the opportunity to experience it all and learn further. The design also has the aim of encouraging and demonstrating sustainability through tidal stream energy. The continuous moving tide allows the tidal stream generators to range up to about 100kW to as high as about 2MW. There are huge benefits to using this kind of energy that is then further used amongst the spaces in The Outlook.

Brief

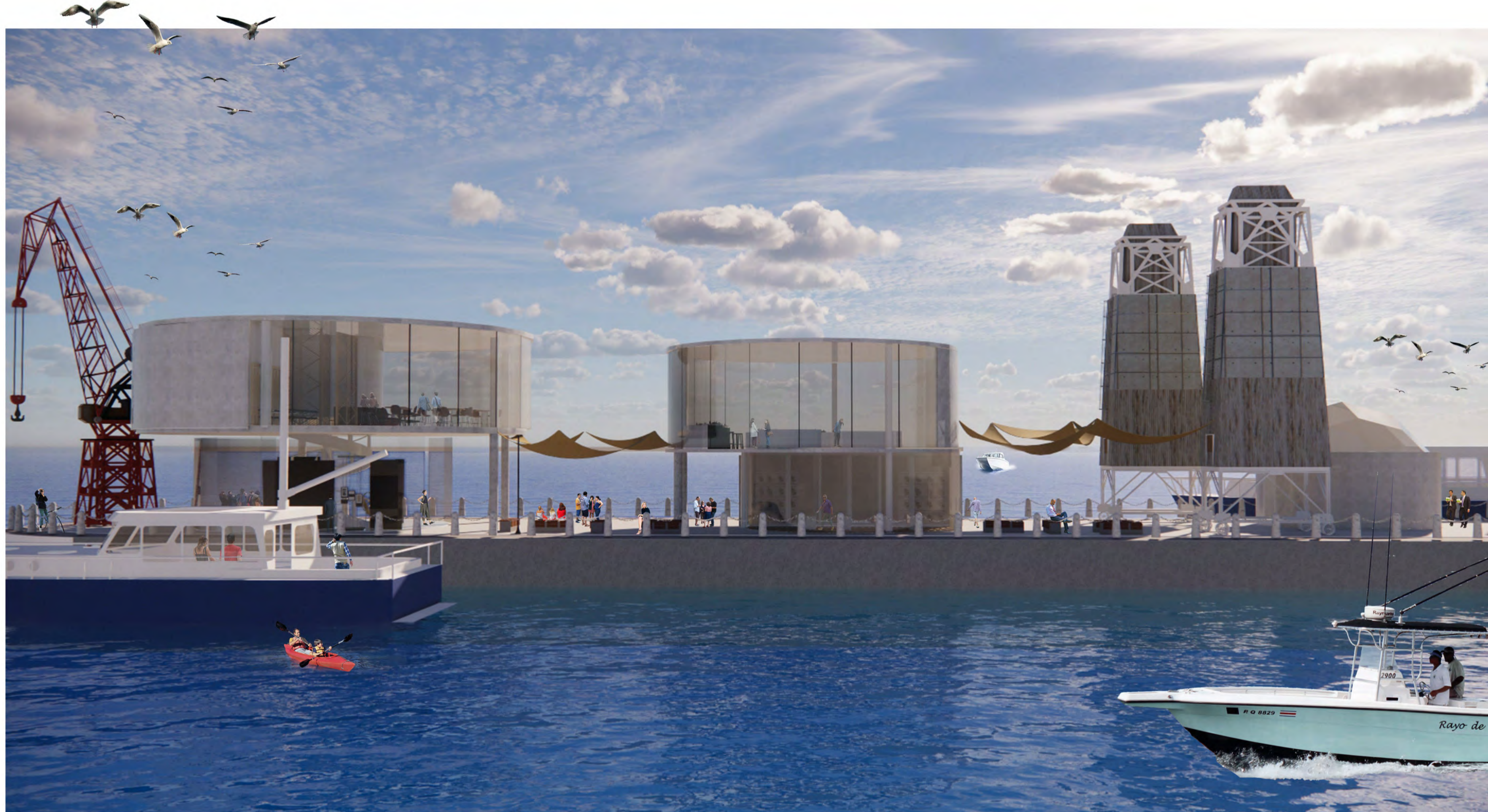


"Adaptive reuse"

Drawing from the concept of adaptive reuse your clients, the V&A Waterfront, are looking to reactivate the Collier Jetty. It straddles the tourist-driven industry provided by the Waterfront mall and The Nelson Mandela Gateway to Robben Island, and the industrial function of boat repair at the ship quay, as well as several marine and logistical industries.



Reference pictures



Full view perspective



Side view perspective



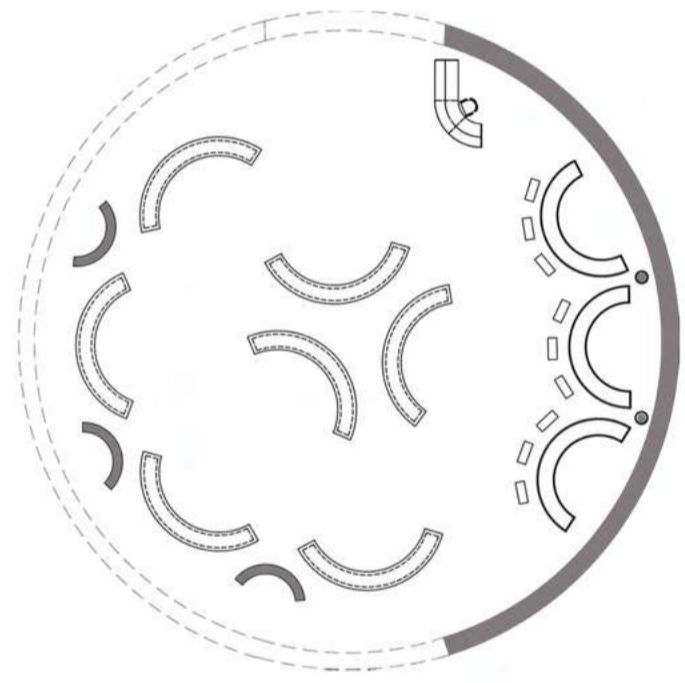
Fish market perspective



Storage perspective



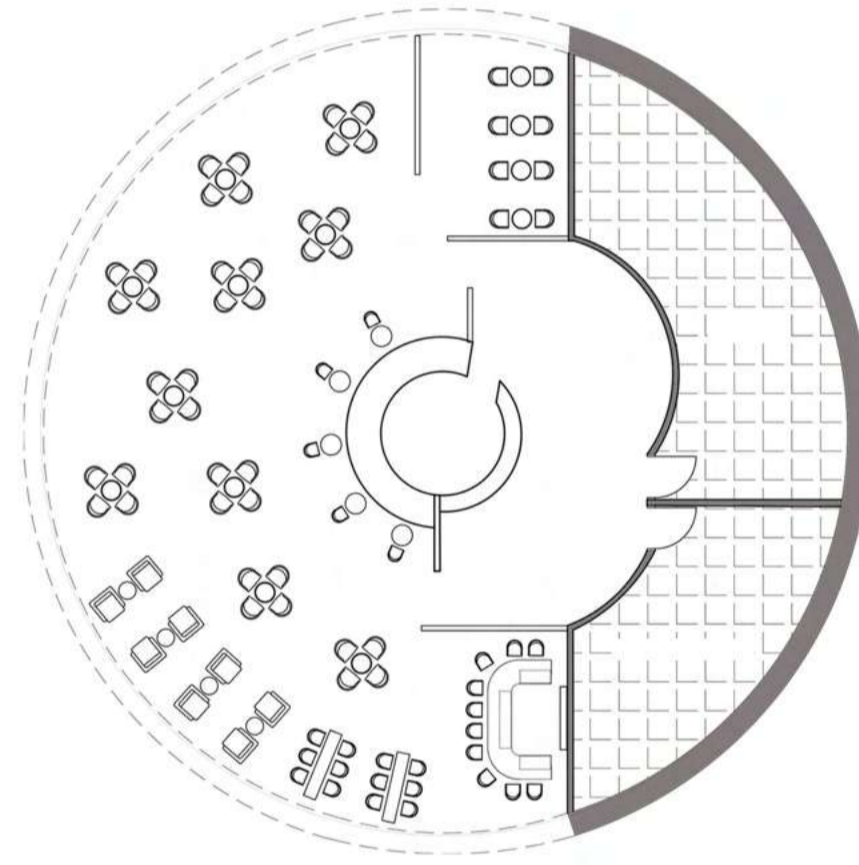
Exhibition perspective



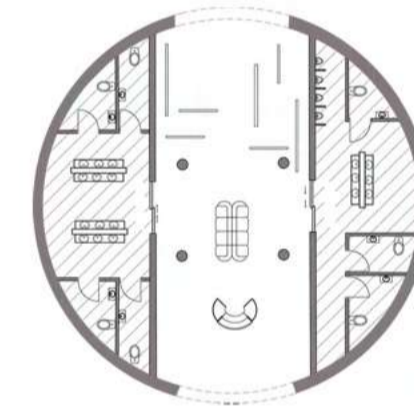
Fish market plan
Scale 1:100



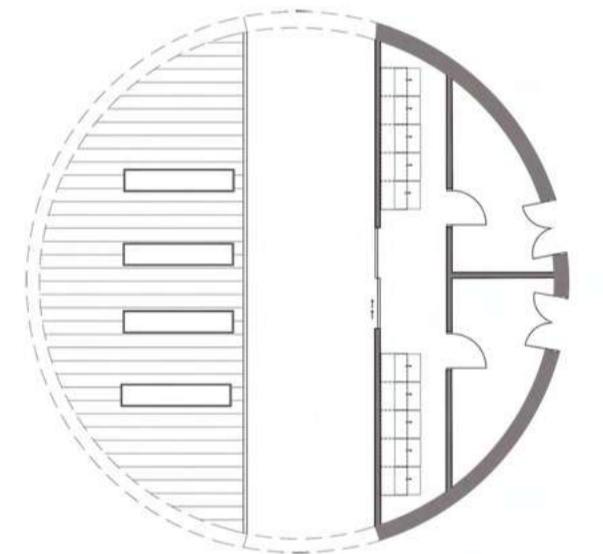
Exhibition plan
Scale 1:100



Restaurant plan
Scale 1:100



Reception plan
Scale 1:100



Fish storage plan
Scale 1:100



Restaurant seating perspective



Bar perspective



Private seating perspective



Caeserstone - Primodria



Caeserstone - Ocean foam



Caeserstone - Empire white



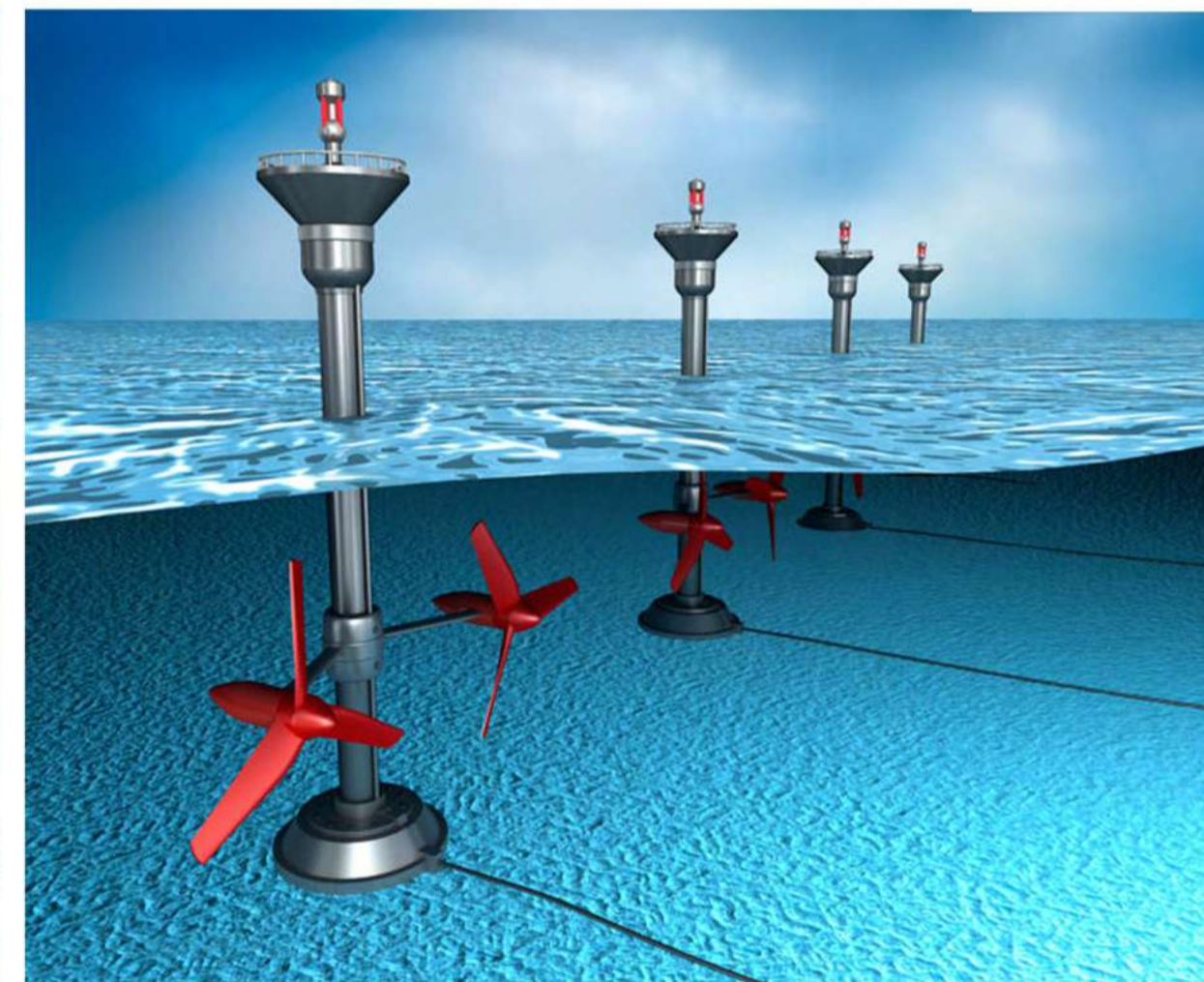
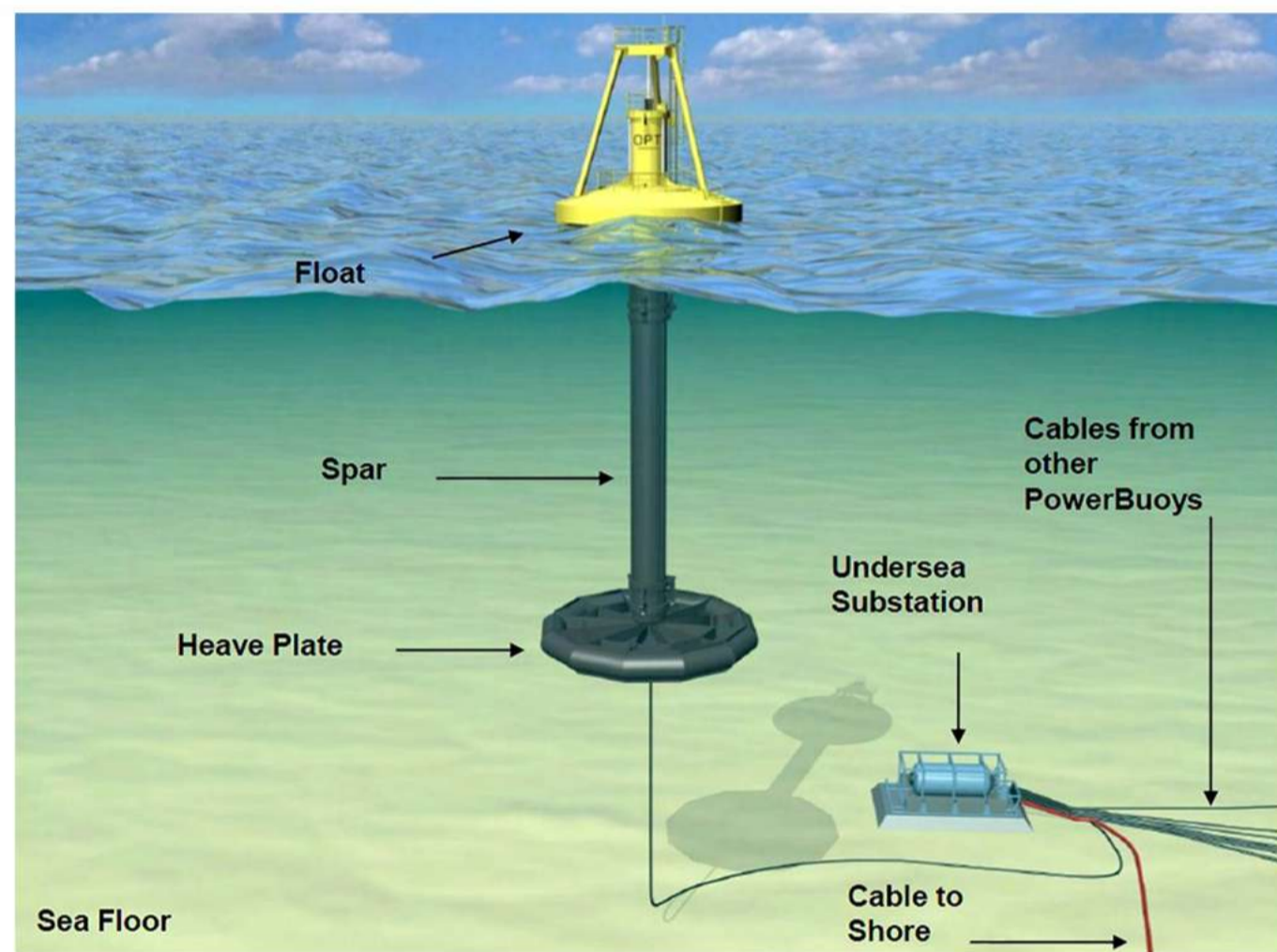
Caeserstone - Noble grey



Caeserstone - Cloudburst concrete

Tidal energy

Tidal energy is an incredibly clean and renewable resource which is more efficient than wind energy because of the density of water and more efficient than solar energy due to its high with about 80% conversion efficiency. Tides are more predictable compared to wind energy and solar energy, therefore a more reliable source, especially for a space near the ocean, it is economical and very sustainable for the direction in which the world is going in.



PG Bison

Strand Street,
Quarry,
Cape Town.



20.
07.
21.

04.

Concept

being a diverse space offering support, entertainment and learning for everyone. Specifically targeting tourists but also welcoming locals, to support their surrounding community. With an interactive learning centre which is beneficial for all ages, a restaurant with local cuisine and just beneath a space to go learn how to make the cuisine yourself. To then further give back to shelters in the community to feed those who are in need, to support as if a pillar would a building. The free flowing walk-through space allows for a full experience while waiting for your cable car to your next location or even just stopping by.

Brief

The City of Cape Town is a tourist hotspot. Natural beauty, an historic past and a cosmopolitan DNA attract millions of people to it every year. Like most cities, its tourist destinations are not conveniently located in one neatly cordoned off district. They are scattered across the landscape, reflecting the diversity that makes them interesting and worth visiting. To unlock the potential of this Heritage Route a link must be created that will join the existing routes. Enter the Strand Street Quarry. The Strand Street Quarry supplied much of the stone for the Cape's earliest buildings. No longer in use, the quarry slipped into disregard, left to silently guard the Bo-Kaap from Strand Street. Although planned to be proclaimed a national heritage site, litter, vagrancy and crime have since filled the void.



Reference images



Cable car building perspective



Building Exterior perspective



Retail pods perspective



Soccer field perspective



Outdoor restaurant seating

The aim of the Bo-Kaap kitchen is to offer a space for creativity, learning and support. To be able to learn and give back all from one space, with the branding hopefully slowly touching lives, the initiative is to be the “pillar” to those who are in need and are hungry. Raising awareness to those who enter the doors and spreading it through their understanding.



Kitchen perspective

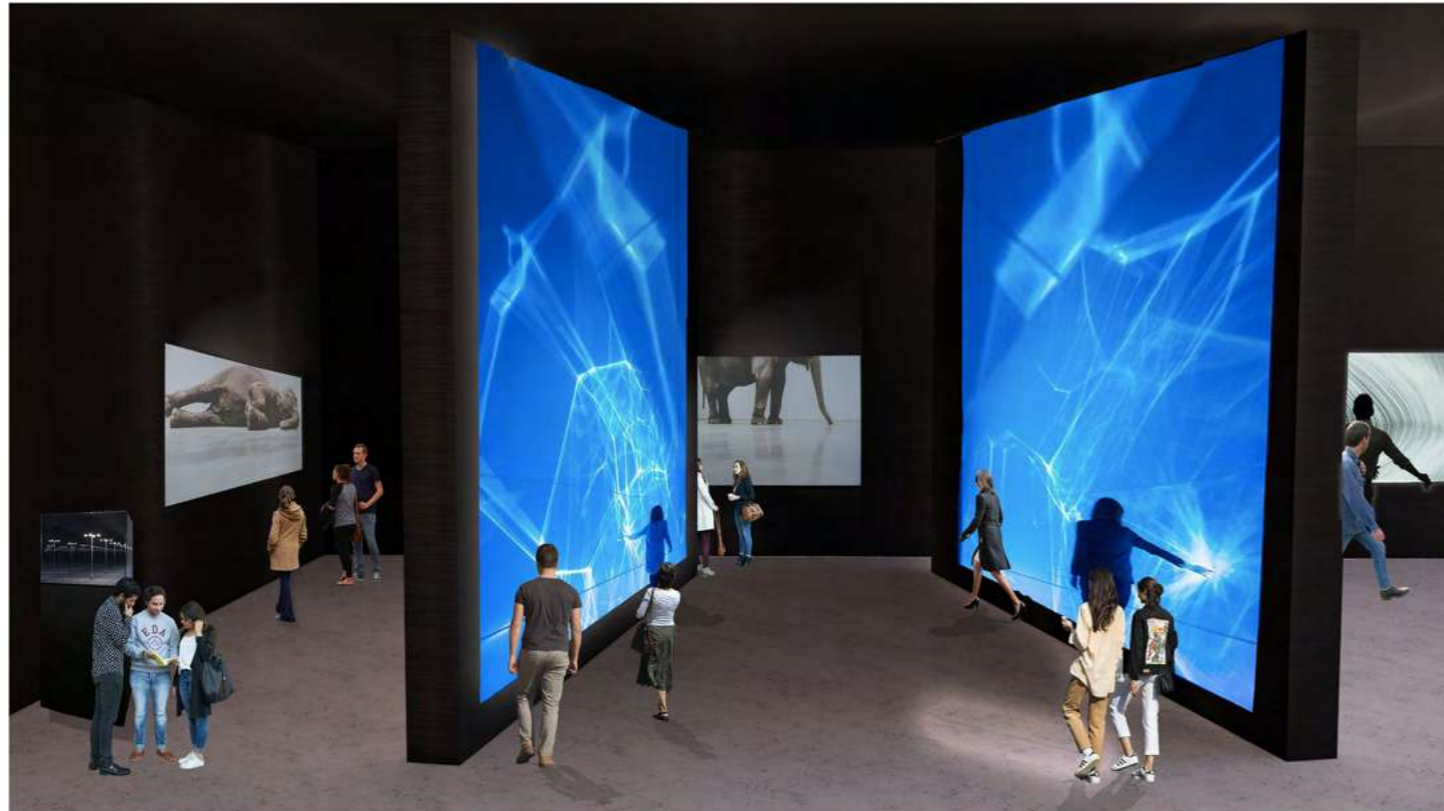


Exterior perspective



Logo/Branding





Interactive perspective one

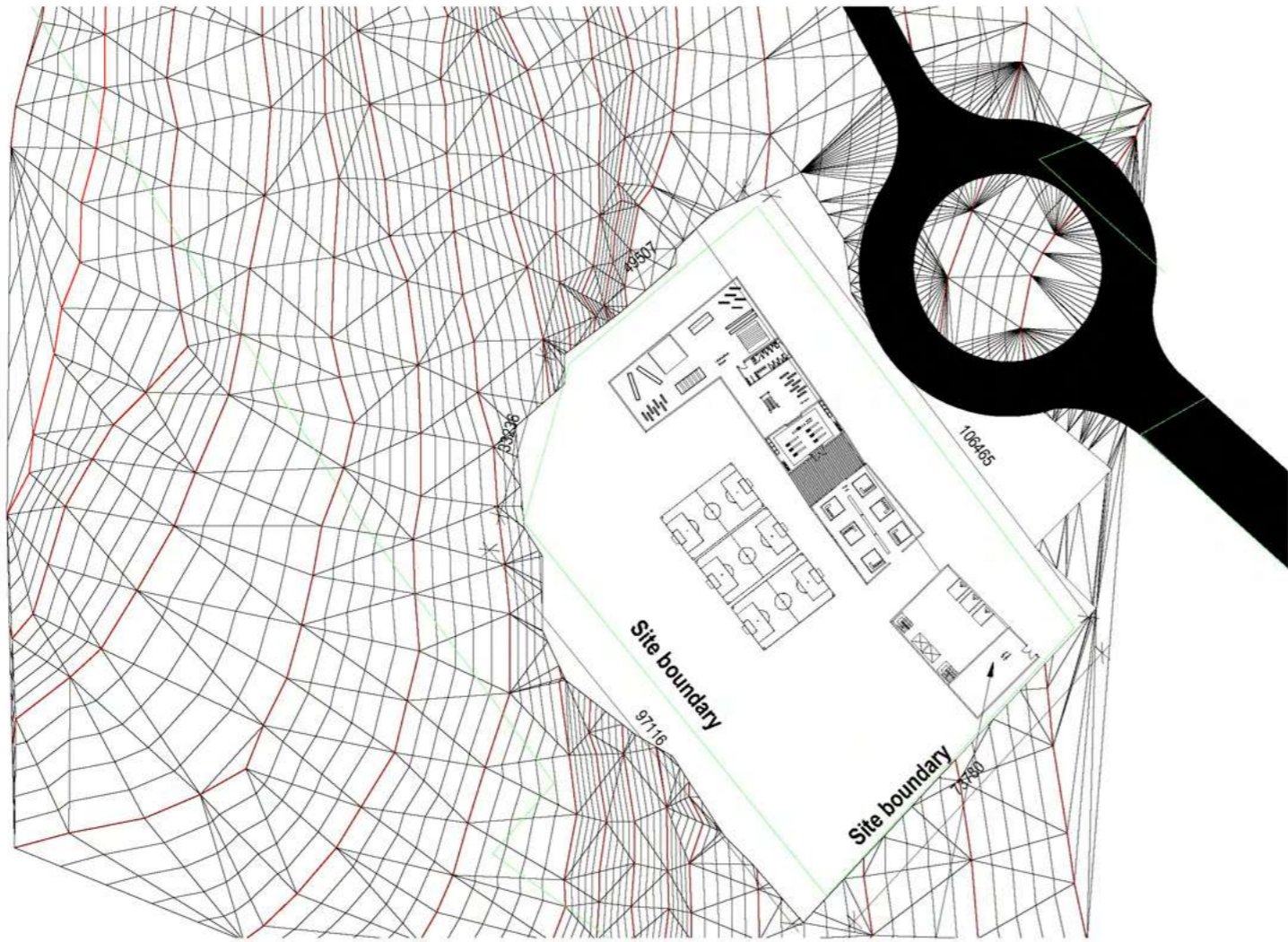


Interactive perspective two

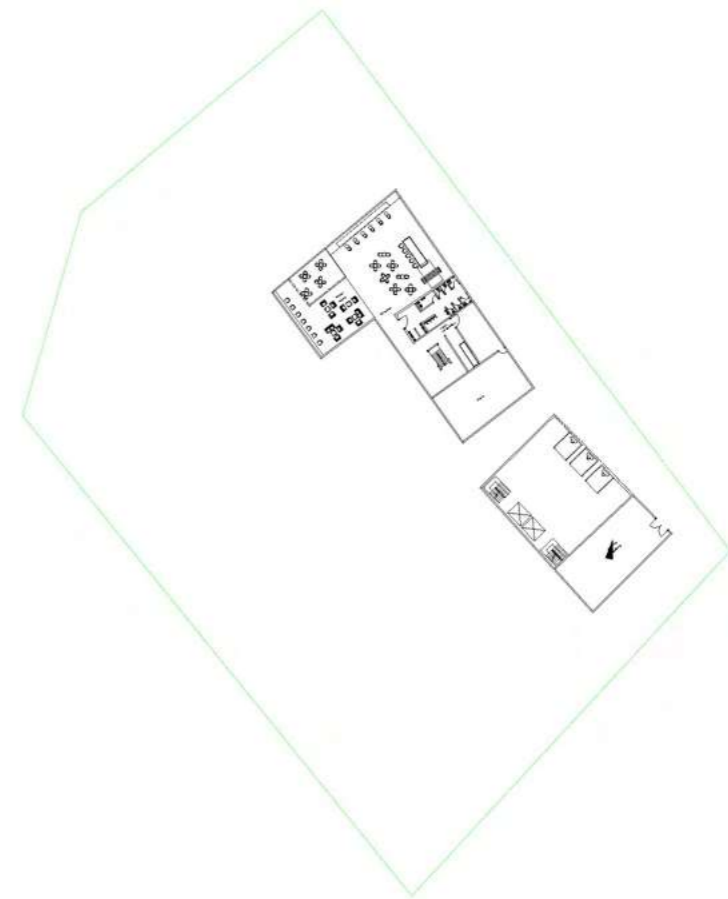


Referenece images





Ground floor
Scale 1:100



Second floor
Scale 1:100

Homespun

China's
Xishuangbanna rainforest



02.

11.

21.

05.

Concept

Your cocoon in the trees:
an elegant sanctuary of re-energising retreat from the entanglements of modern life.
Our resort in China's Xishuangbanna rainforest encompasses stylish and effortless living
in cohesion with nature's finest attributes.

Homespun - the silken strand that brings you back to nature.

Brief

We invite you to imagine a way of living in the lap of nature,
suspended amongst a magnificent forest,
under starry skies, anywhere in the world.

The design of the Tree House must be innovative,
creative with a sustainable edge whilst
adhering to biophilic design principals.

The relations between the exterior surroundings
and the interior space must be taken into consideration.
The proposed design should be well-conceptualized and considered.
The Tree House will be a space designed for 2 individuals
and the area should not exceed 50 sqm's built up internally.





Side view perspective



Front view perspective



Bedroom perspective



Bathroom perspective



Section cut bedroom



Lounge and kitchen perspective



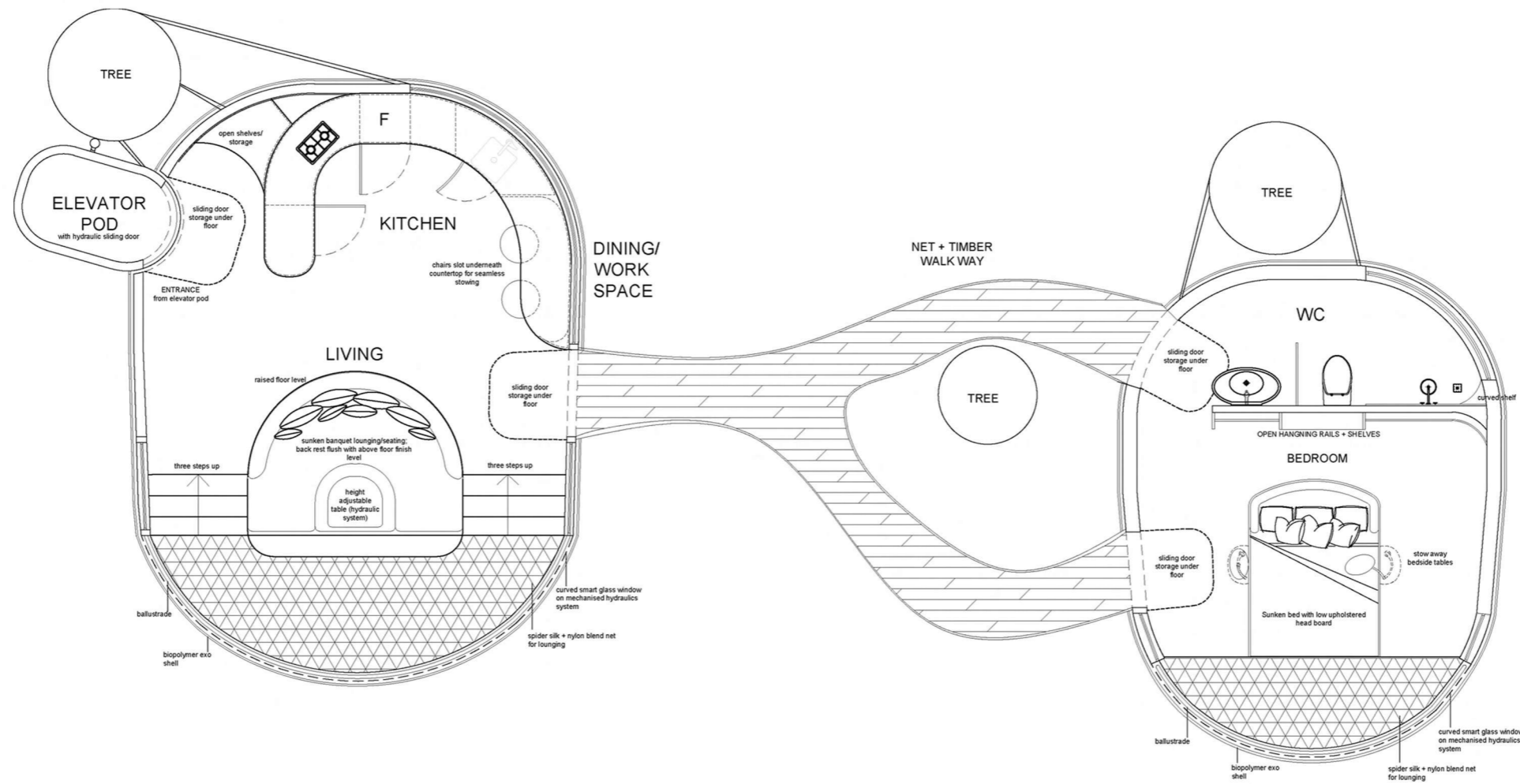
Section cut lounge and kitchen



Close up kitchen perspective



Close up bedroom perspective



HOMESPUN POD FLOOR PLAN
SCALE 1:50



Iris Van Herpen inspired this project through delicate materials and the execution of her elegant designs. The use of these techniques created a very natural and organic look to her pieces. Which was exactly the direction this project went in, with the use of silk worms spinning silk for specific statement pieces in the space. Highlighting the surroundings of the resort and taking inspiration from it and its occupants.

Element5

Victoria road,
Camps Bay



10.
22.
21

06.

Concept

With the hustle and bustle of the Camps Bay famous strip Element Five offers a unique experience of both serenity and festivities. The inspiration of the five elements and your five senses has come from the beautiful surrounding views of the location and has been referred to throughout the space.

Further creating an environment to feel tranquil or rather intrigued by the surroundings of both the interior and exterior.

While utilizing the space taking inspiration from a “Pod”,

the aim being to provide the guests with the option of being within a space while creating their own.

The spa then further offers a variety of treatments and experiences which tie one to the elements once again, natural products and rejuvenating effects.

Brief

*A new Luxury 5-star hotel designed by SCOTT+PARTNERS
is about to break ground on the world
renowned Camps Bay strip in Cape Town, South Africa.
The hotel has a beach front location with
magnificent views of the Atlantic Ocean,
Lion's head and the 12 Apostles.
You have been appointed as the Interior Designer for the project*



With the aim being of my concept to create a space inspired by the five elements, I have included them in each space through a beautiful finish.
A very tactile space, almost interactive. A space to unwind and to rejuvenate amongst the natural elements of your surroundings.



REFERENCE IMAGES



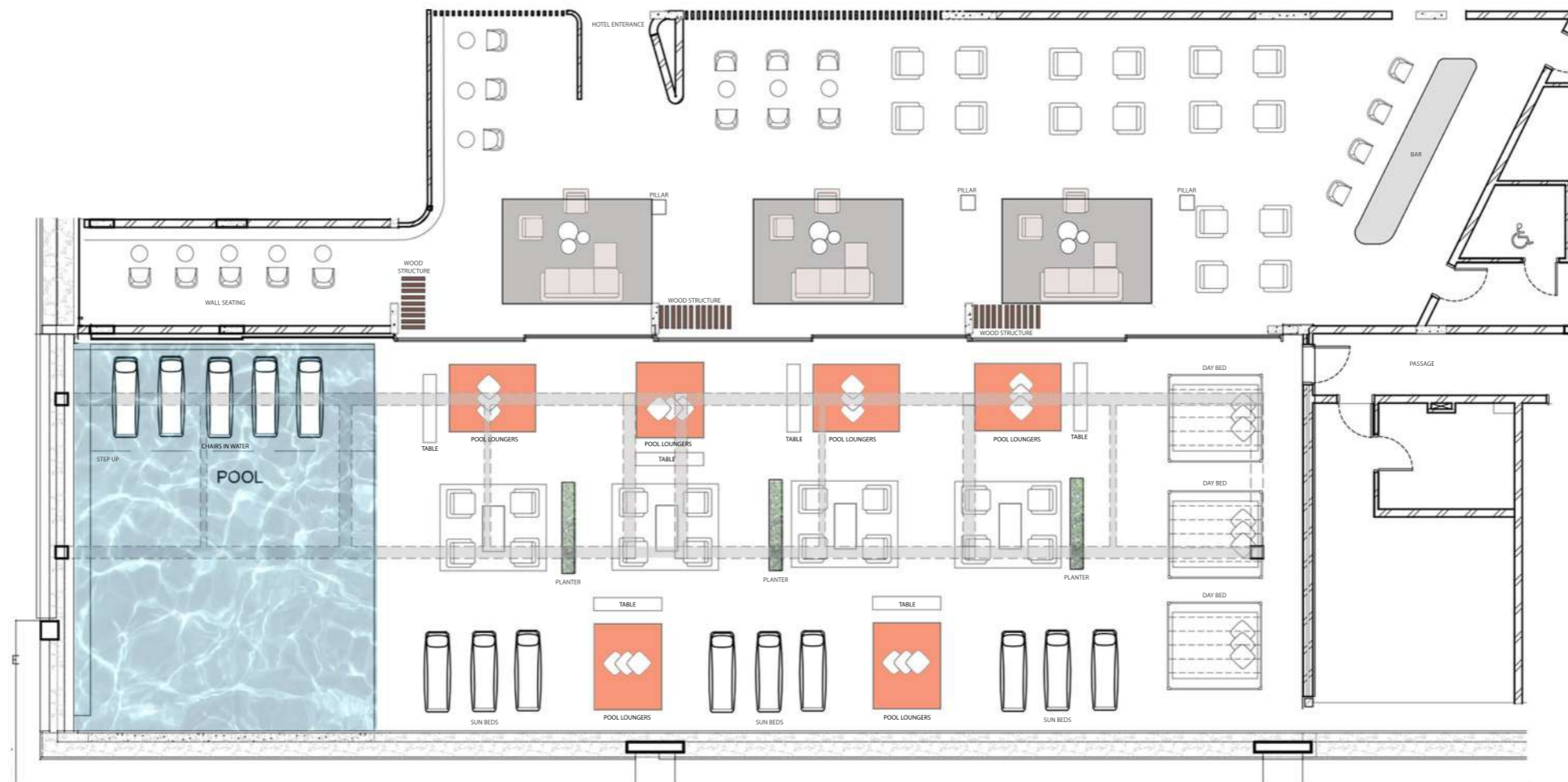
POOL VIEW 1



POOL BEDS



POOL LOUNGE VIEW



POOL AND LOUNGE FLOOR PLAN



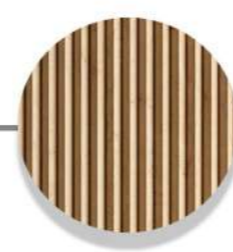
RECEPTION BATHROOMS



RECEPTION



LOUNGE SPACE





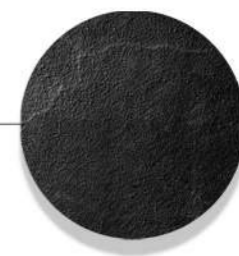
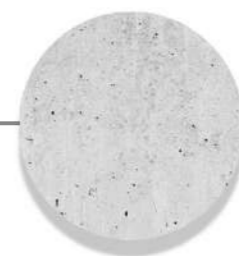
SPA POOL VIEW 2



SPA POOL VIEW 1

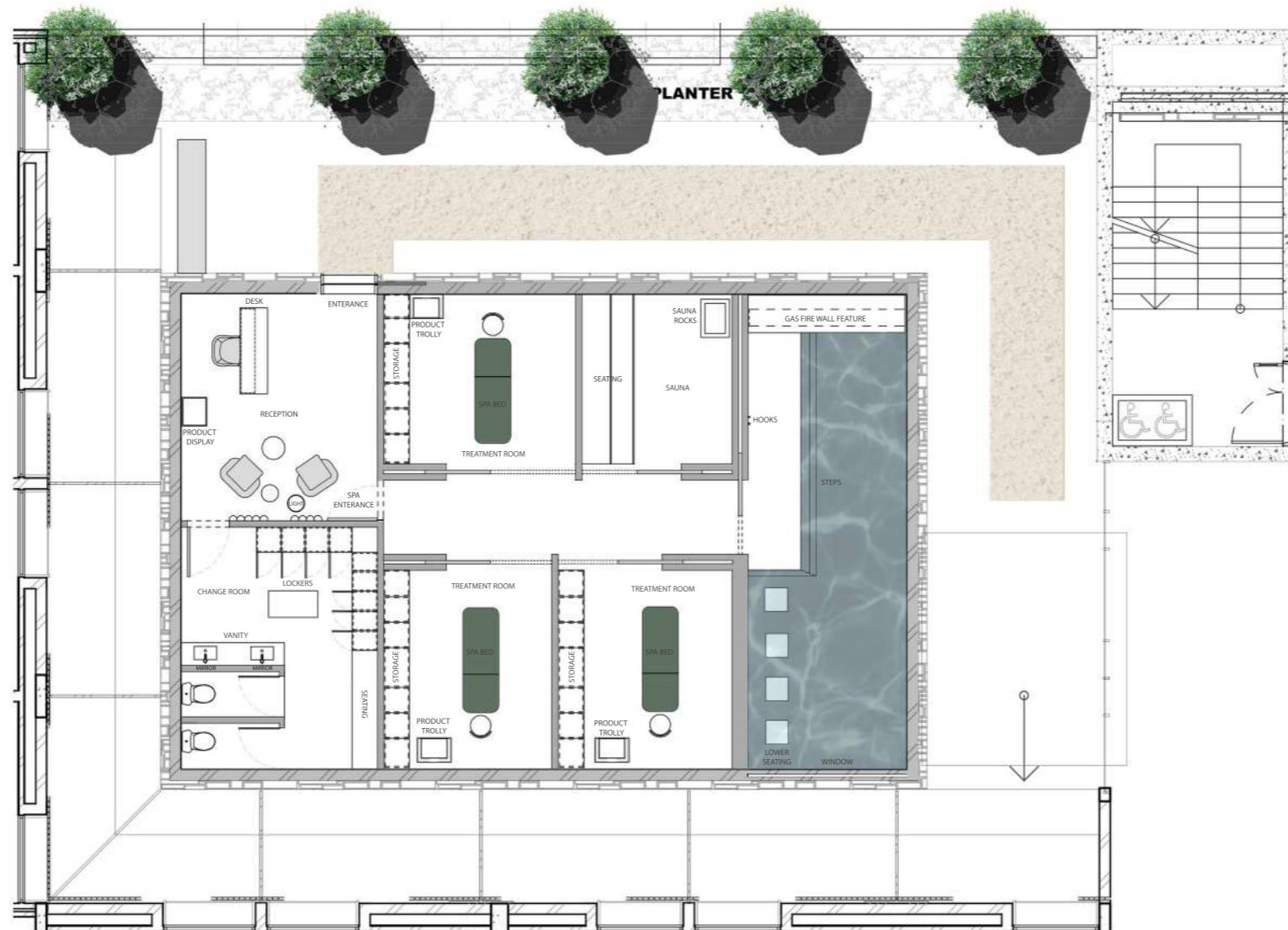


SPA TREATMENT ROOM



FAITHFUL TO NATURE

ESSE
AESOP
SKOON



SPA FLOOR PLAN

SCALE 1:100

The "pod" like structure follows on my concept of being aware of covid and how people are wanting to be in an open space yet still create their own little bubble. The structure of the bed allows this as it creates a seperate space from the rest of the bedroom.



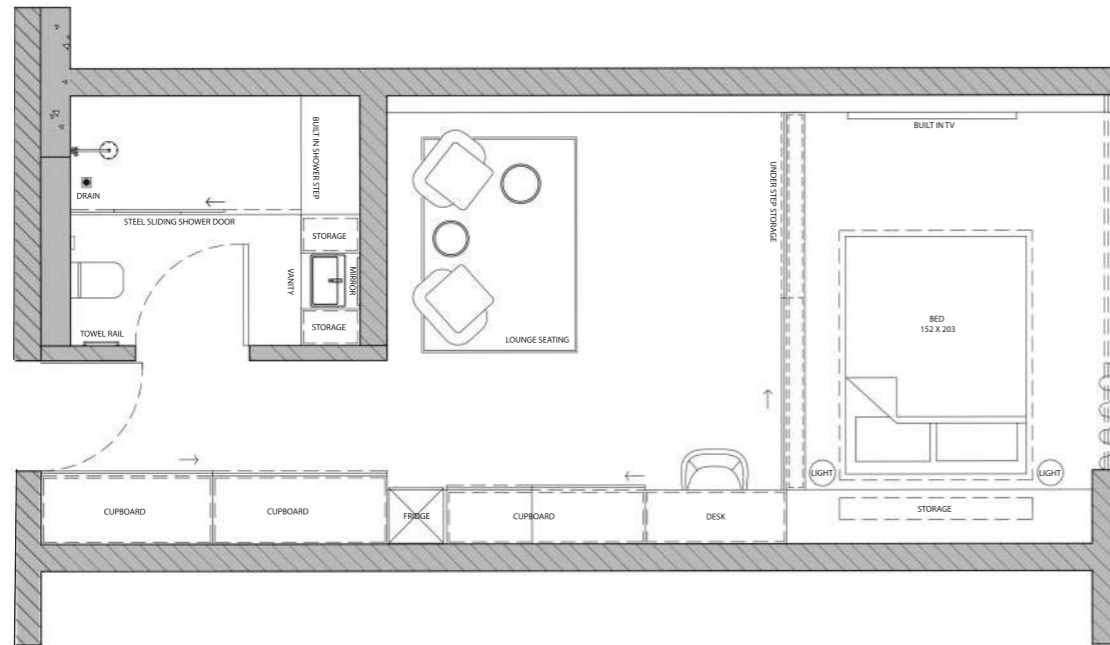
BEDROOM 1



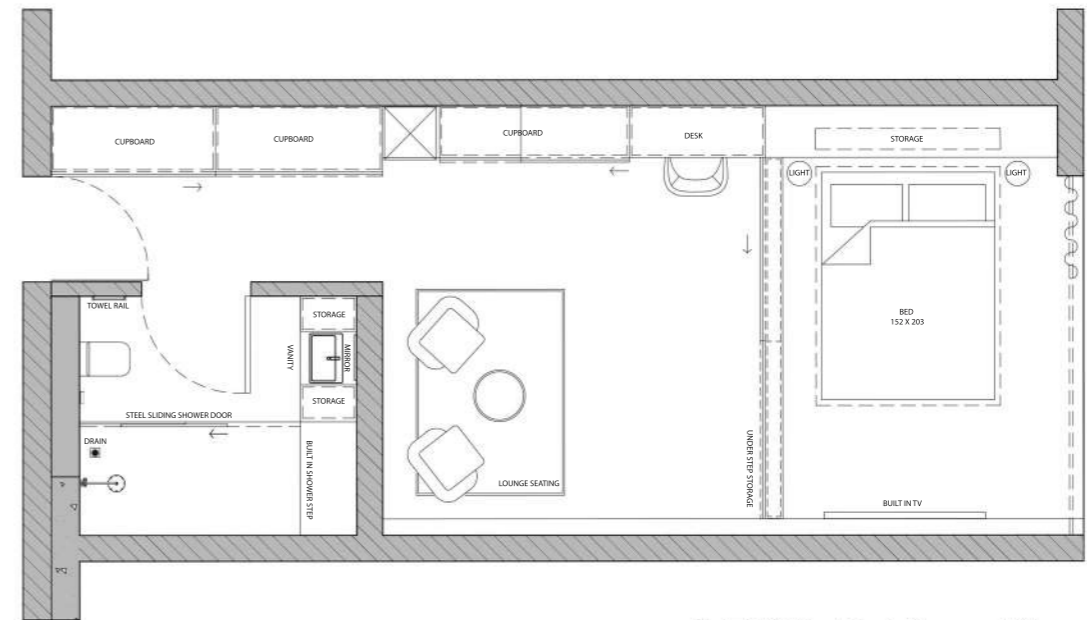
BATHROOM



BEDROOM 2



LEVEL 5: Floor Plan
Rooms & Bathrooms
 SCALE 1:50

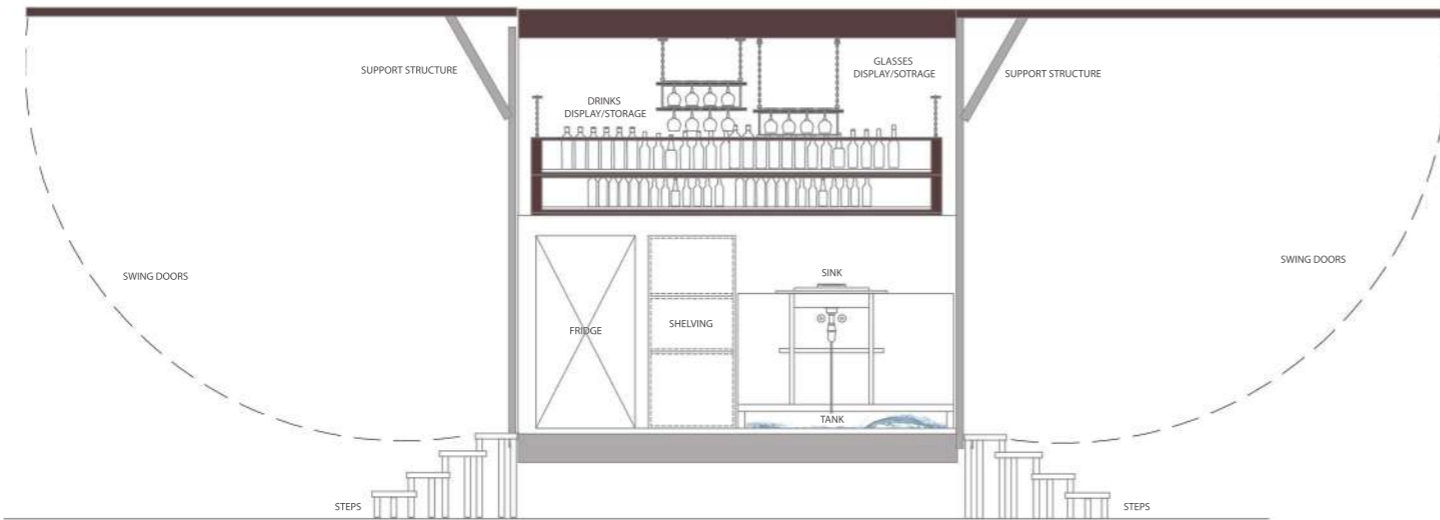


LEVEL 5: Floor Plan
Rooms & Bathrooms
 SCALE 1:50

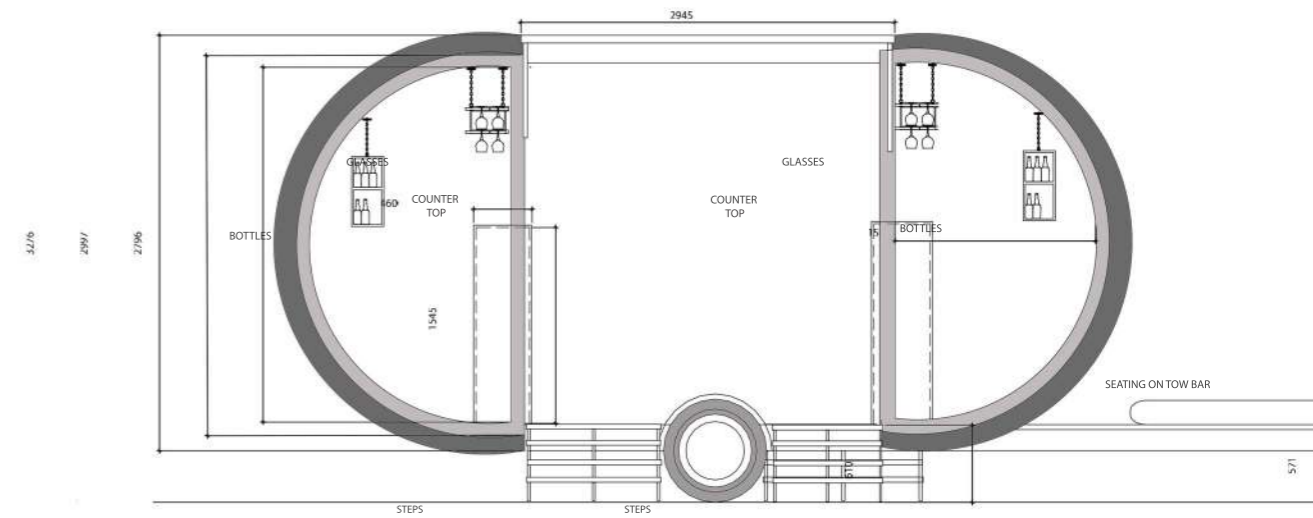


BEACH BAR CLOSE UP

BEACH BAR FULL VIEW



**BEACH BAR
SECTION CUT**
SCALE 1:25



**BEACH BAR
JOINERY ELEVATION**
SCALE 1:25



BRANDING

Contact me on:

alexacoetzee1@gmail.com

0764313438