

CHLOÉ BARNARD
INTERIOR DESIGN PORTFOLIO | 2022-2024

Chloe Barnard



CONTENTS PAGE

- 01** BOXED | HOUSE BARNARD
- 02** STAY UNIQUE | ECO CABIN
- 03** TIMELESS ELEGANCE FOR AGING IN PLACE | KSA KITCHEN
- 04** BOXWOOD | RESIDENTIAL
- 05** FIBONACCI | STUDENT LIVING
- 06** HARTLEY HAUSE | HOTEL
- 07** VINTAGE FOR LOVE | COMMERCIAL
- 08** PRODUCT DESIGN
- 09** TECHNICAL DRAWINGS

01 BOXED | HOUSE BARNARD

BRIEF

Design your dream living space in Cape Town City bowl. Choose between integrating your building between existing structures or starting fresh with demolition, adapting the elongated and narrow property with a street-facing entrance. As the client, your lifestyle narrative shapes the design. The rectangular space has internal dimensions of 4500 mm x 11000 mm, spanning a ground floor, first floor, second floor, and rooftop garden. Connectivity options to neighbouring buildings are available, with access from the front and an optional rear courtyard.

CONCEPT

This apartment celebrates the fusion of history and modern living within Cape Town's vibrant city center. By reimagining an existing structure, the design preserves the building's historic charm while introducing contemporary functionality. The facade retains classic architectural elements, acting as a bridge between the past and present, while the interiors showcase an open, airy layout that embraces natural light and minimalist elegance.

The space is tailored for urban professionals or creatives, with flexible living areas for work, relaxation, and socialization. Sustainability is a cornerstone of the design, incorporating energy-efficient systems and recycled materials to create a home that respects both heritage and the environment.



FACADE



KITCHEN ISLAND





LOUNGE VIEW



KITCHEN PERSPECTIVE



KITCHEN PERSPECTIVE



LOUNGE PERSPECTIVE



BEDROOM
PERSPECTIVE



WALK-IN CLOSET PERSPECTIVE





SHOWER

BATHROOM PERSPECTIVE

02 STAY UNIQUE | ECO CABIN

BRIEF

Design Time students, seize the opportunity to craft unique cabin designs for Stay Unique. The company plans six cabins near Cape Town in 2023, expanding nationally in 2024. Two cabins are underway, and the Design Time group's innovative designs are eagerly awaited. Selected designs will be built, offering students the chance to experience the final product. Stay Unique provides professional photography and influencer content for student portfolios, offering exposure and career benefits. This is a prime chance for Design.

CONCEPT

The elevated small house redefines minimalist living with a harmonious connection to nature. Perched gracefully on stilts, it integrates seamlessly into its landscape, embodying simplicity and modernity with clean lines and purposeful design. Expansive windows invite abundant natural light, creating a fluid transition between interior and exterior spaces while framing breathtaking views. Thoughtfully designed multi-functional furniture maximizes versatility, ensuring every inch serves a purpose. This house celebrates sustainability and mindfulness, offering a tranquil, adaptable living environment that fosters a deep connection with the surrounding natural world, making it a serene retreat for those seeking balance and intentionality in their lifestyle.

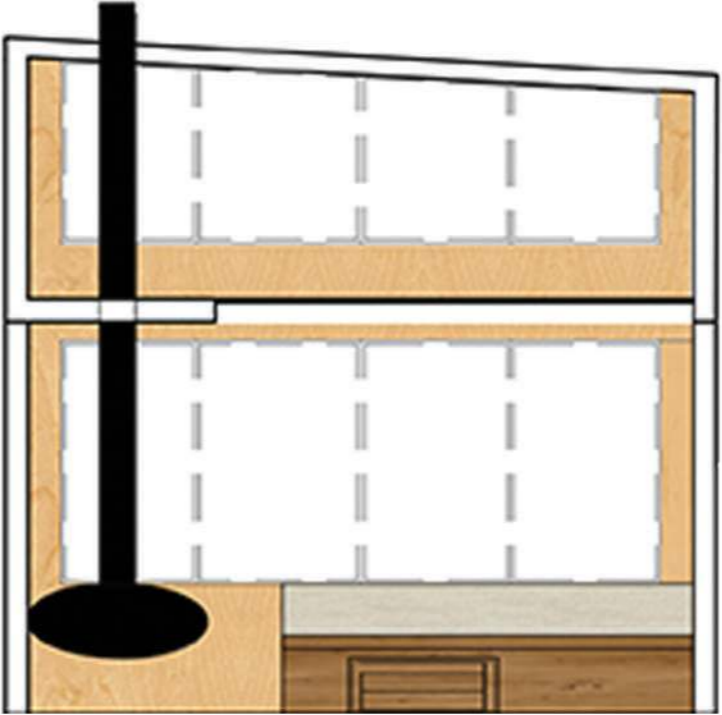




FACADE PERSPECTIVE



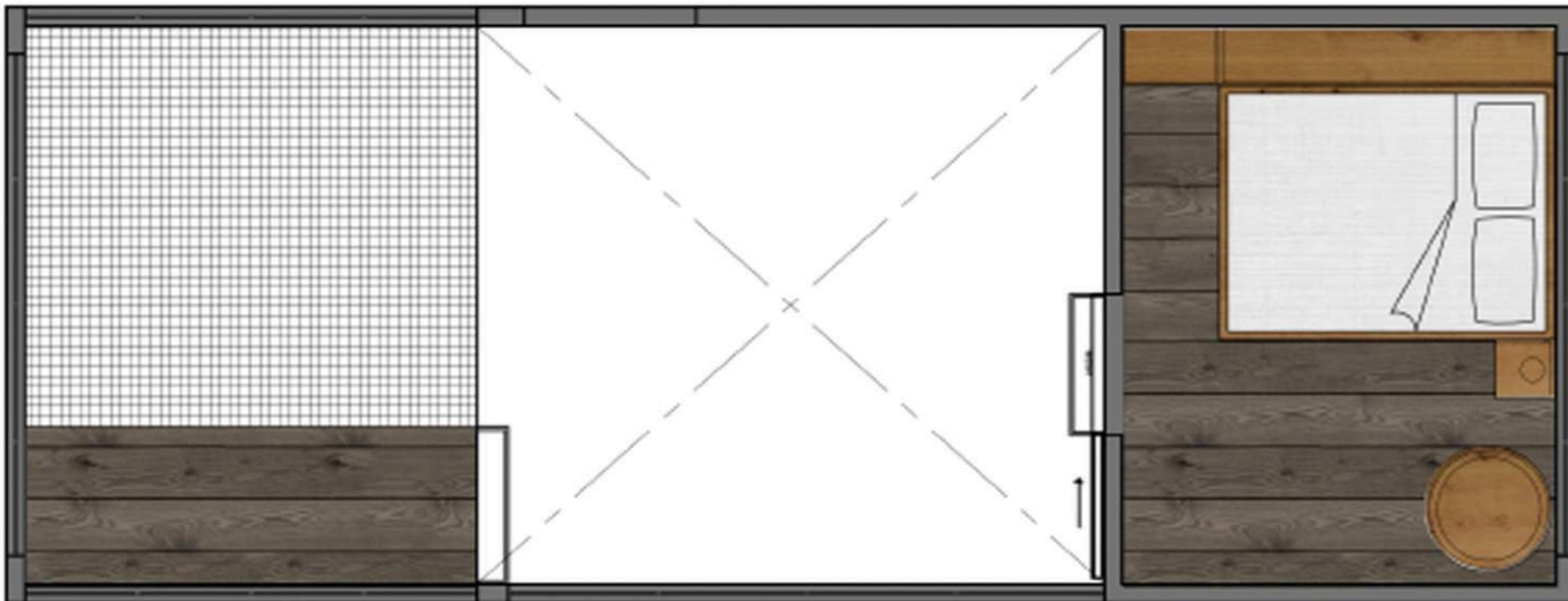
ELEVATION A | SCALE NTS



ELEVATION A | SCALE NTS



PLAN | LOWER LEVEL | SCALE NTS



PLAN | UPPER LEVEL | SCALE NTS



BATHROOM PERSPECTIVE



KITCHEN PERSPECTIVE



KITCHEN PERSPECTIVE



BEDROOM PERSPECTIVE



DOUBLE VOLUME PERSPECTIVE

03 TIMELESS ELEGANCE FOR AGING IN PLACE | KSA KITCHEN COMPETITION

BRIEF

Bev and Michael Jones, a retired couple, are downsizing to a freestanding home in Groot Parys Lifestyle Estate, Paarl. At ages 68 and 70, they seek a compact, elegant kitchen tailored for aging in place. Bev prefers a calm, natural aesthetic and durable materials, rejecting melamine, wrap, or Formica except for carcasses. Quality hardware, efficient storage, and accessible design are priorities due to Bev's mild arthritis, which will progress. Appliances needed include a stove, microwave, extractor, fridge/freezer, and dishwasher, excluding laundry equipment. The design must ensure functionality and comfort as the couple transitions into a new, relaxed phase of life.

CONCEPT

The kitchen design merges sophistication with practicality, offering a serene palette inspired by natural textures. Custom cabinetry ensures optimal storage while prioritizing accessibility, accommodating Bev's evolving needs. Premium finishes create a refined atmosphere, with soft-close drawers and ergonomic handles for ease of use. Integrated appliances maintain a sleek look, enhancing both aesthetics and functionality. This kitchen not only serves as a culinary space but as a welcoming and adaptable environment for the couple to embrace their retirement in comfort and style.



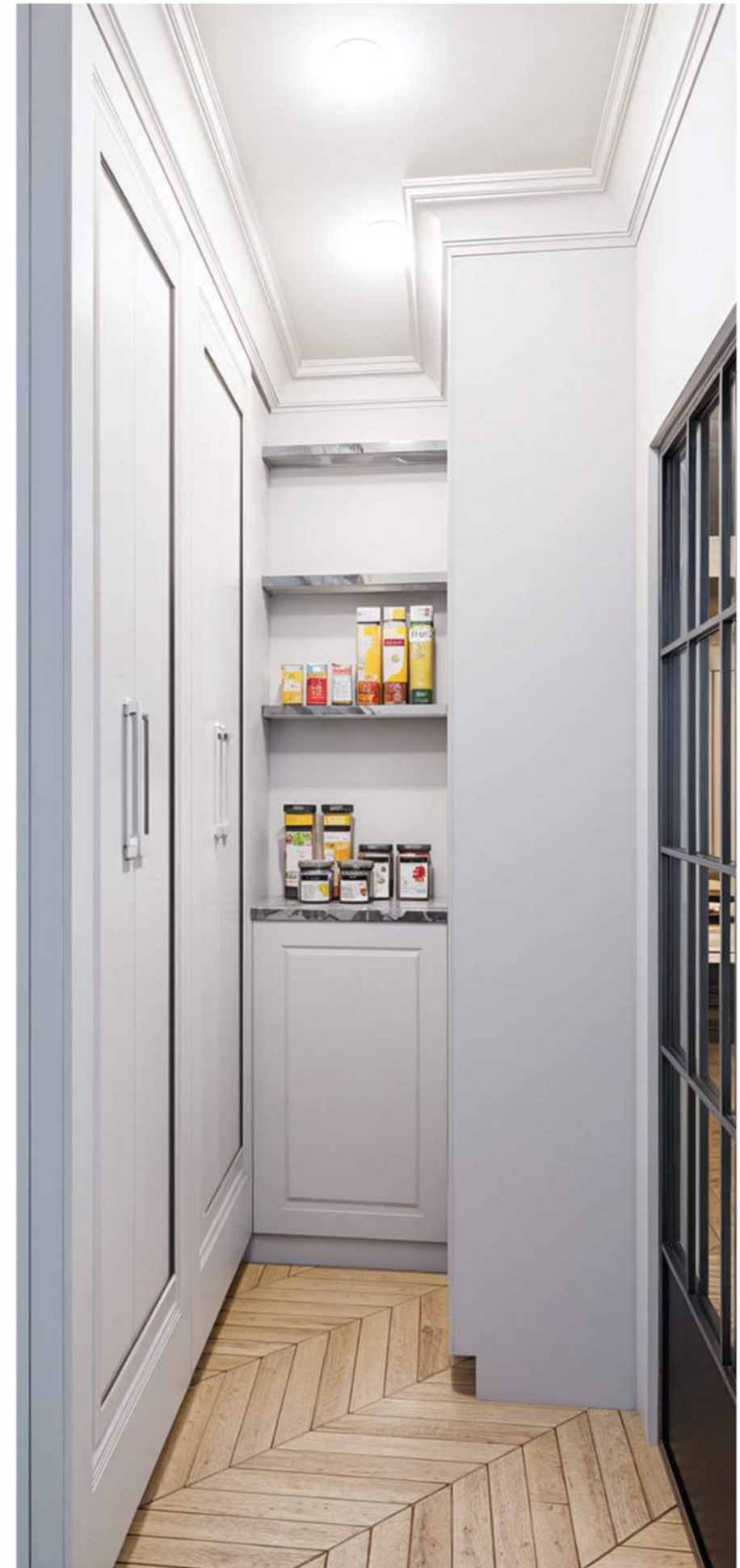
KITCHEN PERSPECTIVE



KITCHEN PERSPECTIVE



SCULLERY PERSEPCTIVE



PANTRY PERSEPCTIVE



BIC / FRIDGE PERSEPCTIVE



COUNTEROP PERSEPCTIVE

04 BOXWOOD | RESIDENTIAL

BRIEF

Run a competition with Design Time students whereby they put together a design scope for the city block fronting Strand, Loop, and Bree Street. Think residential conversion, new offices, campus, hotel, hostel etc the world is your oyster. Main objective to be creative/quirky/different and to not play it safe.

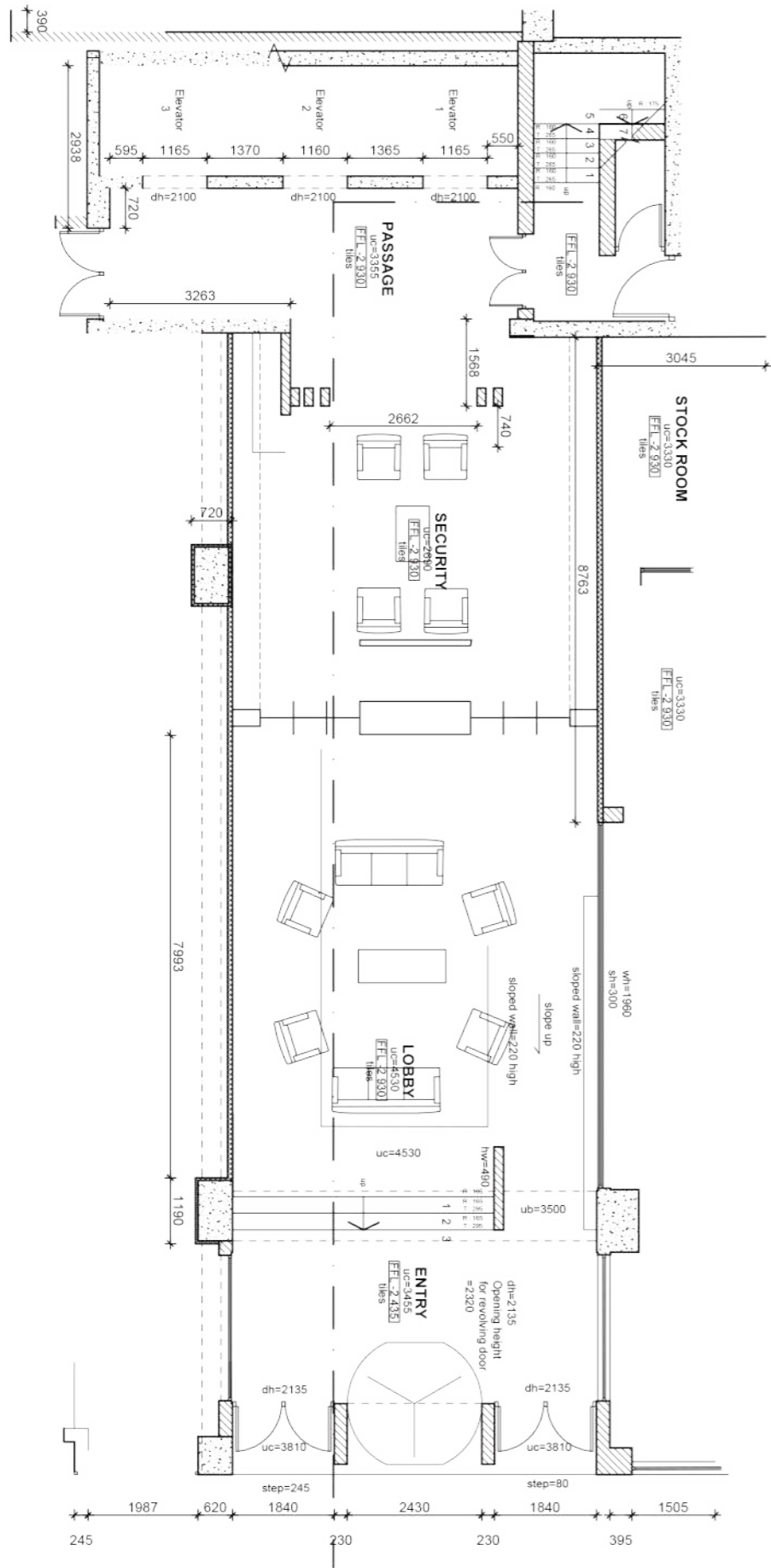
CONCEPT

The goal is to transform this city block into a vibrant, multi-functional hub that blends residential, commercial, and community spaces in a unique, eco-friendly design. The development will be centered around a lush, landscaped courtyard that acts as the heart of the project, providing green space and a serene respite from the bustling urban environment.

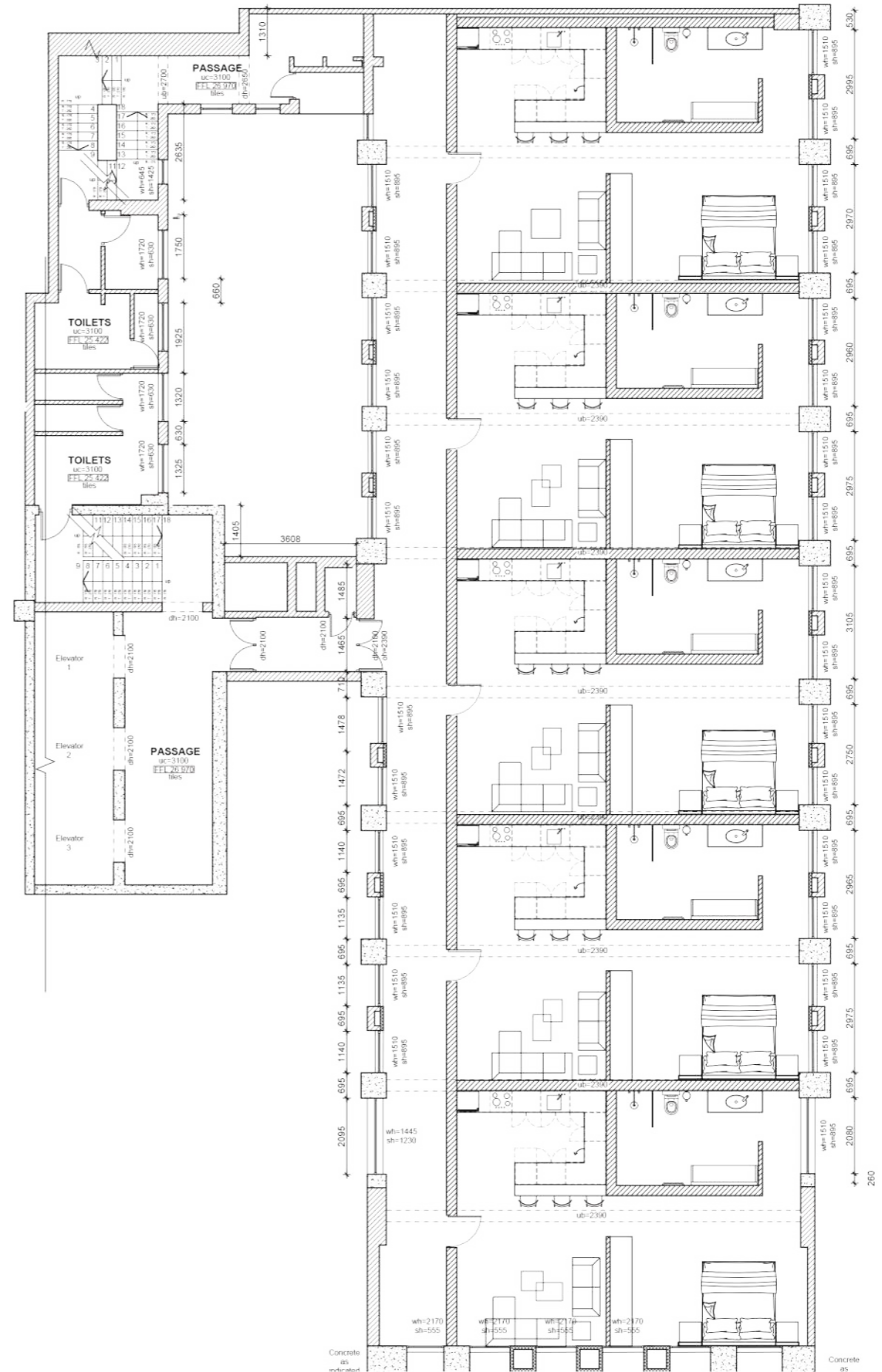


RECEPTION PERSPECTIVE





PLAN | LOBBY | SCALE NTS



PLAN | LTYPICAL BEDROOM FLOOR | SCALE NTS



LOUNGE PERSPECTIVE



KITCHEN PERSPECTIVE



BEDROOM PERSPECTIVE



BEDROOM PERSPECTIVE



BATHROOM PERSEPECTIVE

05 FIBONACCI | STUDENT LIVING

BRIEF

Run a competition with Design Time students whereby they put together a design scope for the city block fronting Strand, Loop, and Bree Street. Think residential conversion, new offices, campus, hotel, hostel etc – the world is your oyster. Main objective to be creative/quirky/different and to not play it safe.

CONCEPT

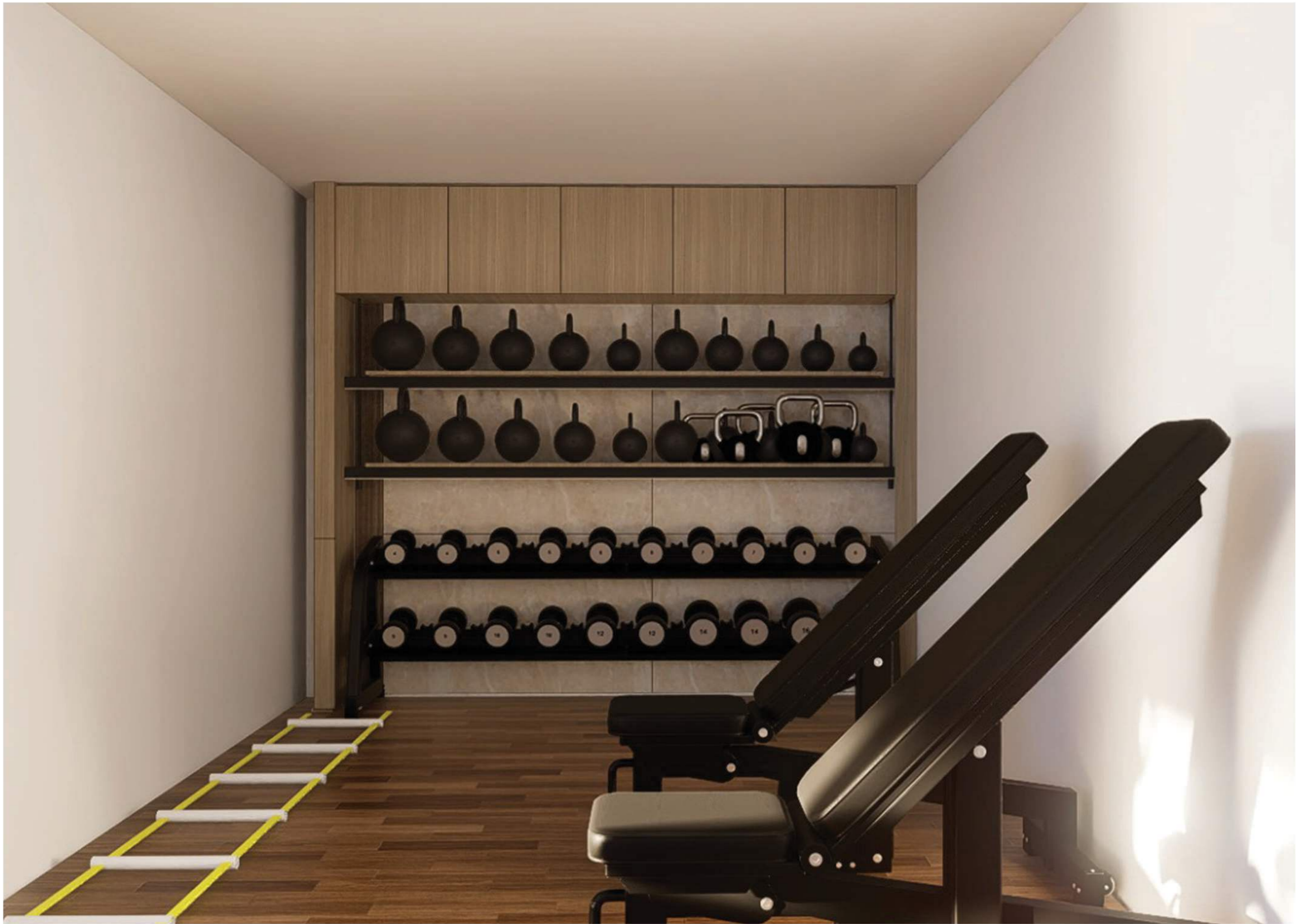
The Fibonacci spiral embodies the essence of student life. From above, it appears as a perfect circle – a simple, complete journey from enrollment to graduation. But from the side, its true nature is revealed: a dynamic, ever-expanding spiral. This dual perspective mirrors the university experience. The circle represents the overarching view of student life – a unified whole of academic, social, and personal growth. The spiral, however, reflects the day-to-day reality – a series of interconnected experiences, each building upon the last, leading to exponential development. Our Fibonacci student housing embraces this duality, creating spaces that honor both the big picture and the daily journey. It's designed to adapt and grow with students, supporting their evolving needs and fostering continuous expansion of knowledge, relationships, and self-discovery. At Fibonacci, we're not just providing a place to stay; we're cultivating an environment where students can spiral into their full potential.



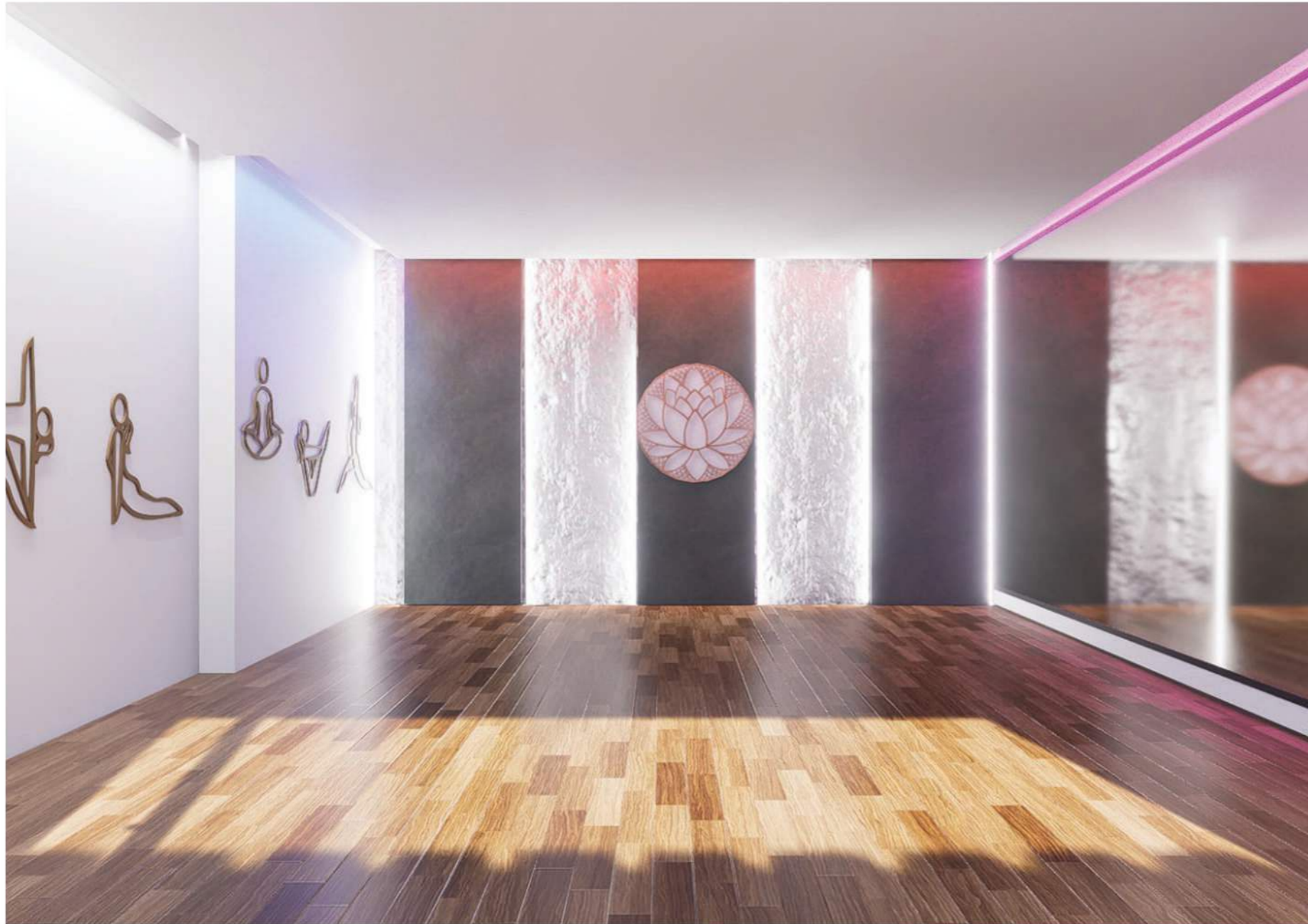
RECEPTION SEATING PERSPECTIVE



RECEPTION PERSPECTIVE



GYM STORAGE PERSPECTIVE



YOGA ROOM PERSPECTIVE



GYM MACHINERY PERSPECTIVE



LOUNGE PERSPECTIVE



LOUNGE SEATING PERSPECTIVE



LOUNGE SEATING PERSPECTIVE



QUIET ZONE PERSEPCTIVE



OFFICE POD PERSEPCTIVE



STUDY ZONE PERSEPCTIVE



CO-WORKING PERSEPCTIVE

06 HARTLEY HAUSE | HOTEL

BRIEF

Design a vibrant art hotel situated in New York City.

CONCEPT

The Hartley Haus boutique hotel merges bold artistic expression with serene luxury in the heart of New York. Each suite features striking abstract wall murals in black and white, contrasting with warm herringbone flooring and rounded, powder-blue modernist furniture. Statement brass lighting and sculptural coffee tables add metallic accents, while potted plants bring organic elements to the space. The bathroom showcases dramatic black marble and a floating vanity, complemented by a living wall of greenery. This design language creates an unexpected harmony between urban edge and natural calm, perfect for the discerning New York traveler seeking both style and sanctuary.



BEDROOM PERSPECTIVE





BEDROOM PERSPECTIVE



BEDROOM PERSPECTIVE

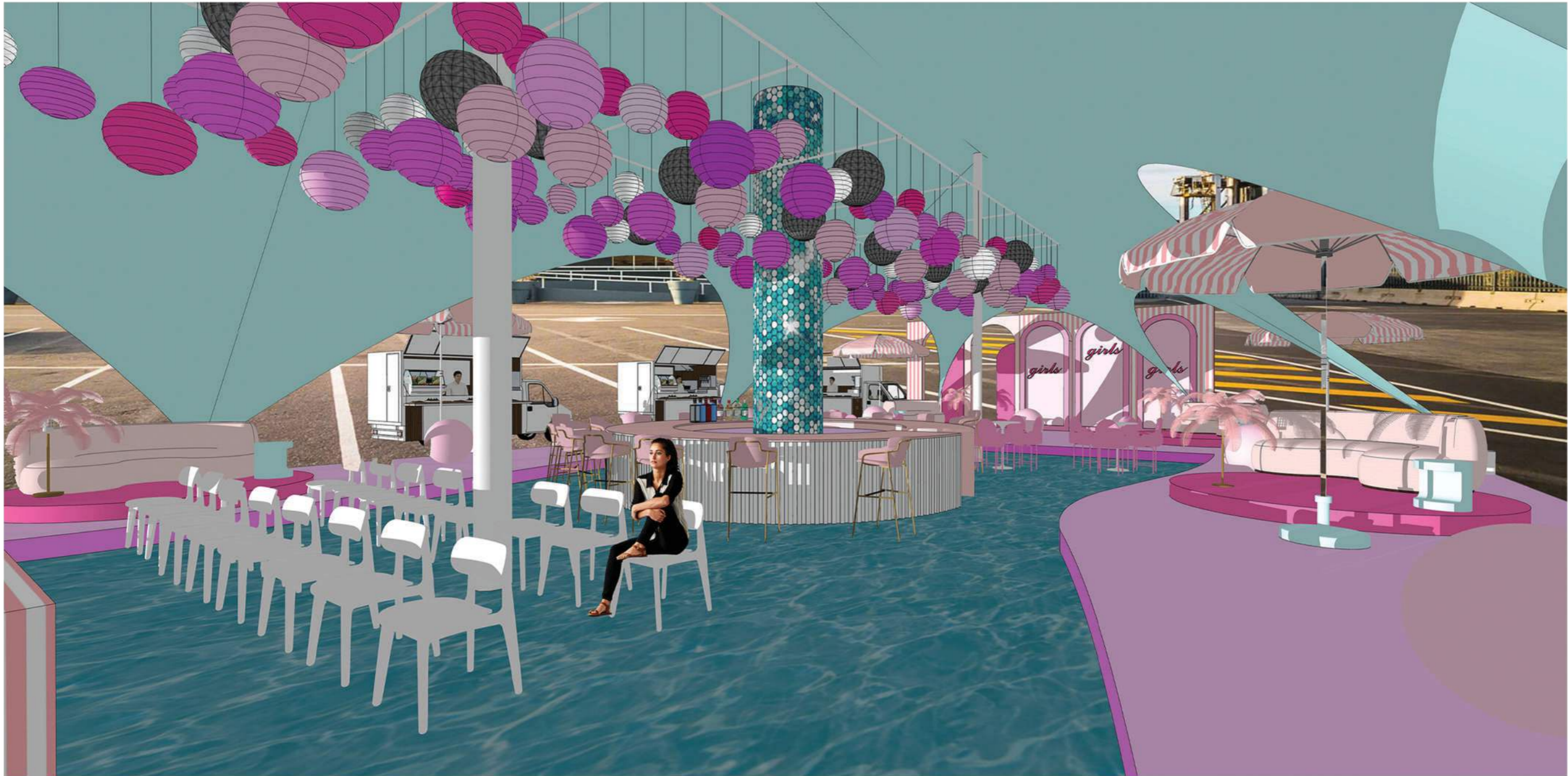
07 VINTAGE FOR LOVE | COMMERCIAL

BRIEF

Run a competition with Design Time students whereby they put together a design scope for the city block fronting Strand, Loop, and Bree Street. Think residential conversion, new offices, campus, hotel, hostel etc – the world is your oyster. Main objective to be creative/quirky/different and to not play it safe.

CONCEPT

"Runway for Hope" transforms the V&A Waterfront into a whimsical fashion oasis where style meets purpose. The design merges retro-futuristic elements with a pastel dream palette of mint green, cotton candy pink, and soft lavender. Floating bubble chandeliers create an ethereal canopy, while curved architectural elements echo fashion's flowing forms. The space features a



SEATING / BAR PERSPECTIVE

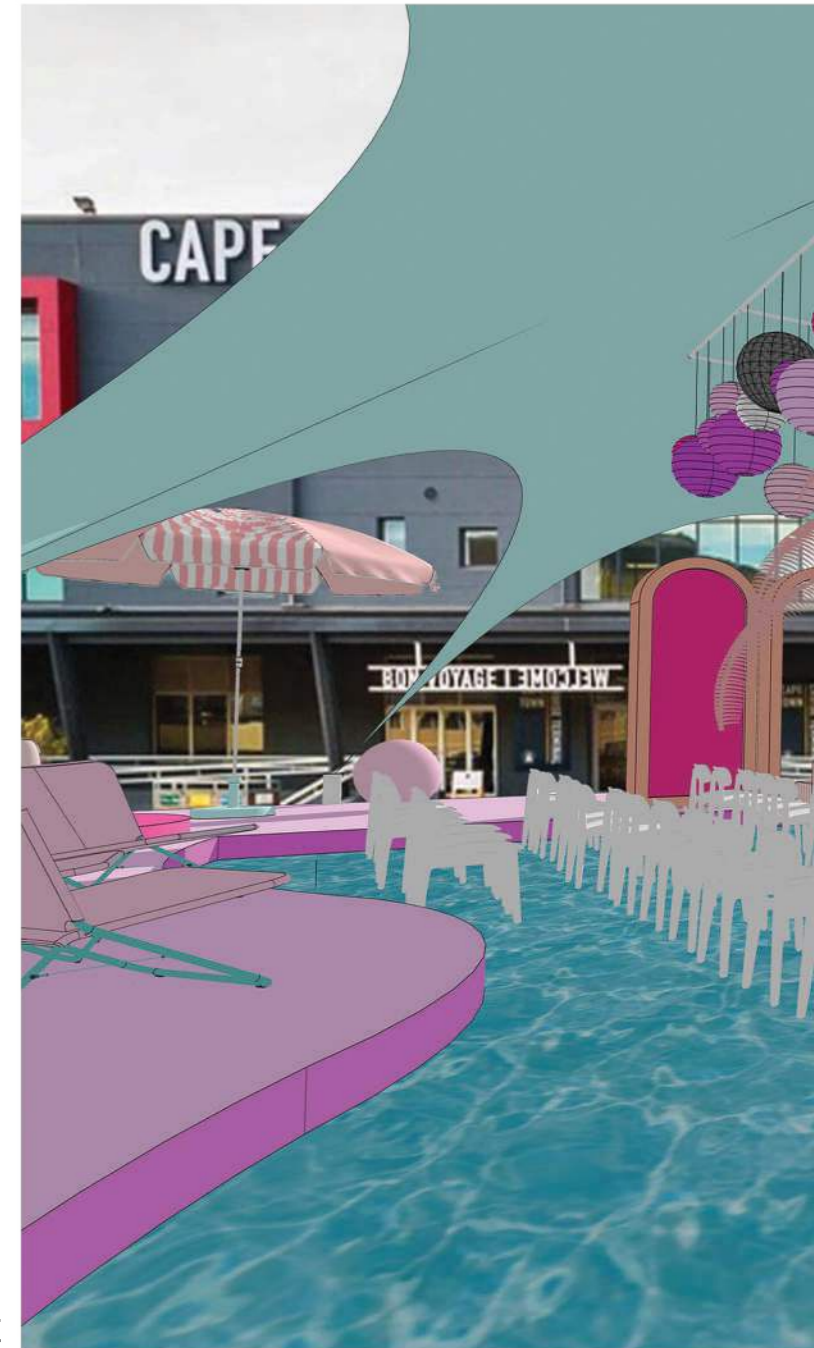


RUNWAY PERSPECTIVE





SEATING / RUNWAY PERSPECTIVE



SEATING / RUNWAY PERSPECTIVE



08 PRODUCT DESIGN

BRIEF

To conceptualise, design and manufacture a chair and a vase.

CONCEPT

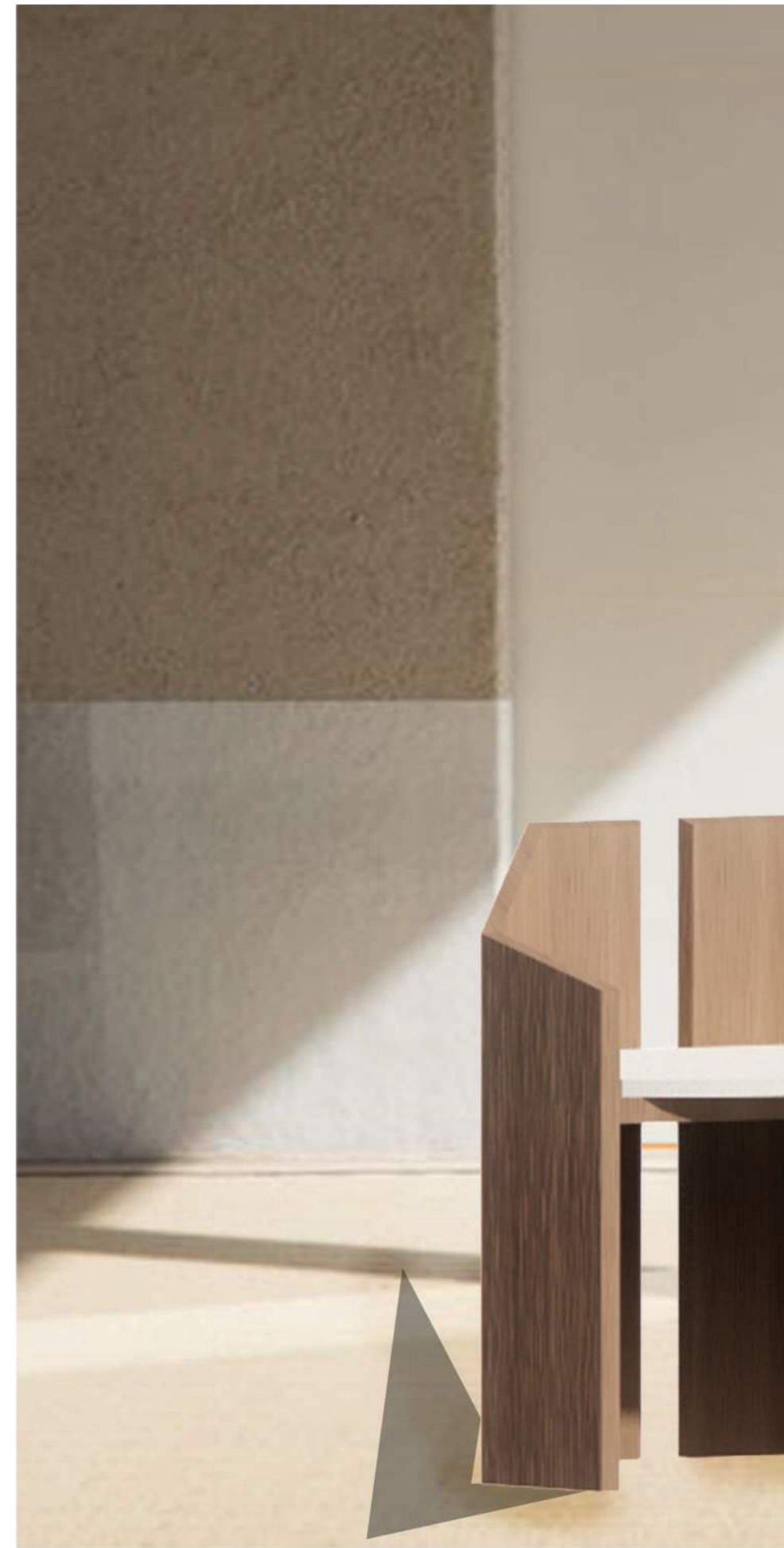
The Arch Chair draws its inspiration from the timeless elegance of architectural arches, symbolizing strength and refinement. Its sculptural form features a combination of bold geometric shapes and subtle curves, blending modernist aesthetics with functional simplicity.

Crafted from natural wood, the chair emphasizes sustainability and warmth, making it a versatile addition to a variety of interior settings. The contrasting light-toned seat provides a visual balance to the darker wood tones, creating a harmonious interplay of materials.

Designed for both comfort and sophistication, The Arch Chair redefines seating as an artistic statement, inviting the user to experience the fusion of design and purpose.

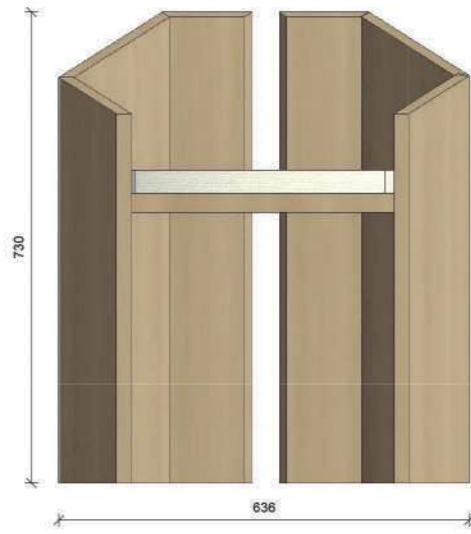




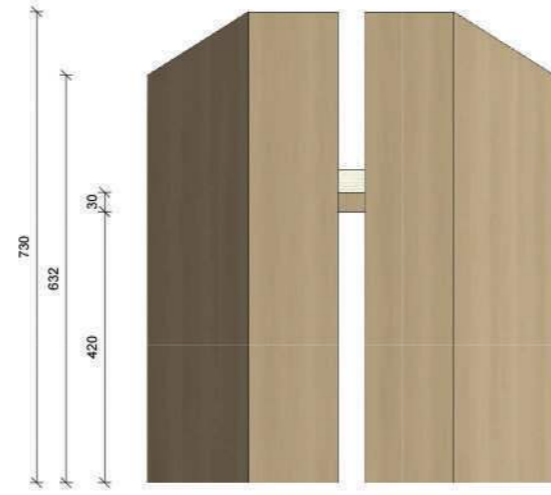








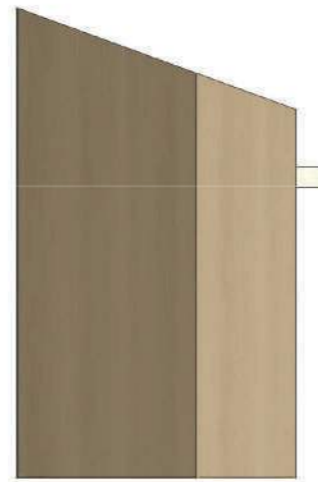
1 ELEVATION 1
1:10



2 ELEVATION 2
1:10



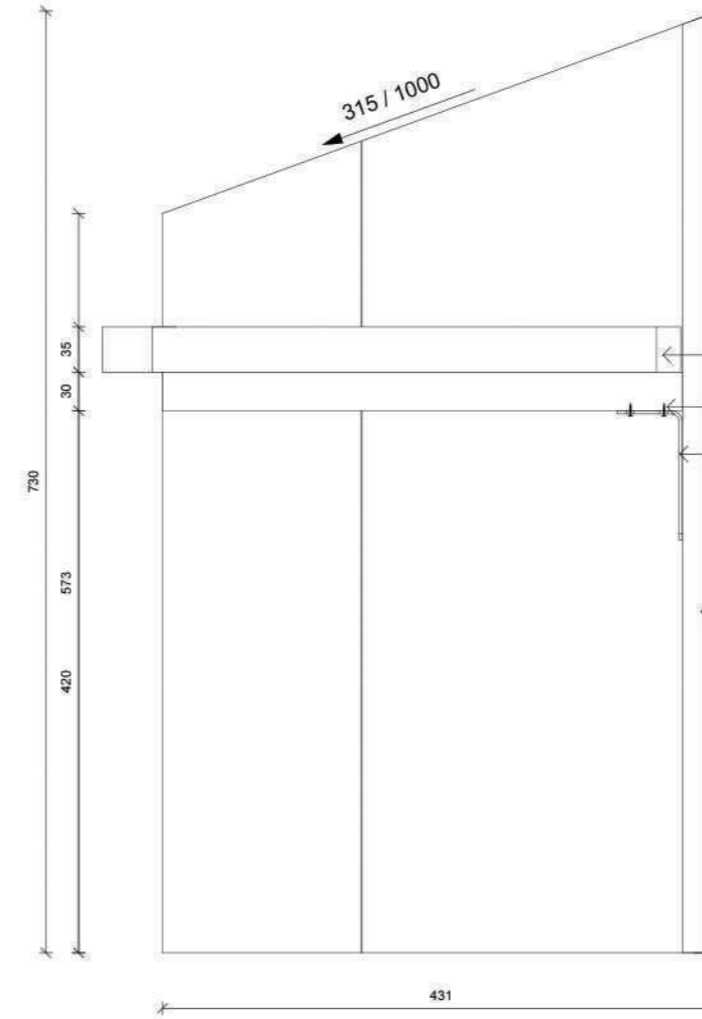
3 ELEVATION 3
1:10



4 ELEVATION 4
1:10



6 Isometric View



5 Section 2
1:5

No.	Description	Date

PROJECT	Chair Technical drawing			CLIENT	Chloe Barnard				
SHEET	Plan, Elevations, Section			Date	26.07.23	Project number	Project 1	Scale (@ A3)	As indicated
				Drawn by	Chloe Barnard	Drawing Number	A7	REV	
				Checked by	Elzabe				

CONCEPT

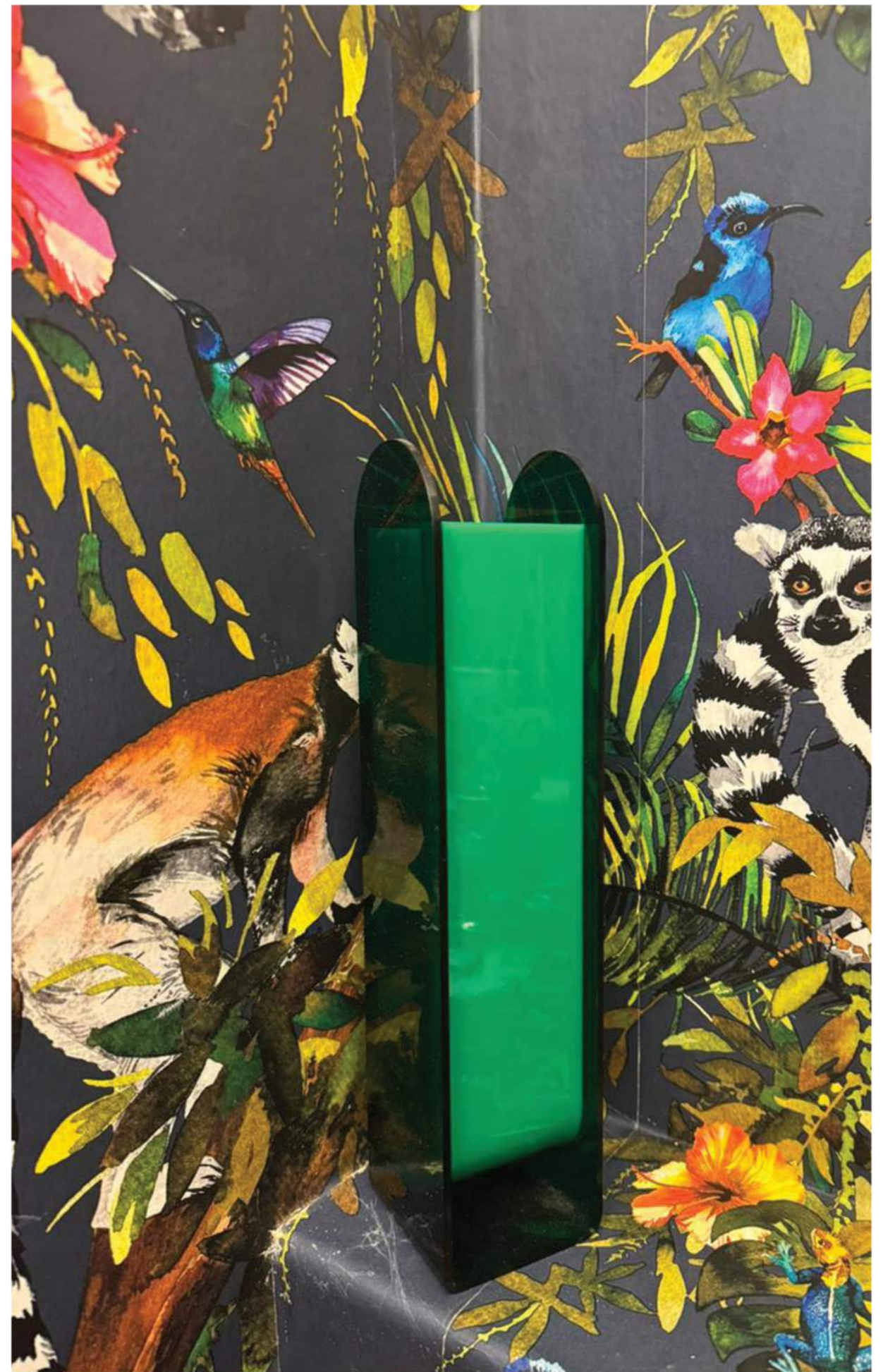
The vase design embodies simplicity and functionality while celebrating modern minimalism. Inspired by organic forms and contemporary design principles, it features clean, geometric lines complemented by soft curves, creating a balance between structure and fluidity.

The green tones, derived from nature, evoke a sense of tranquility and harmony, making the vase an ideal centerpiece for spaces that emphasize biophilic design. Constructed to seamlessly integrate into modern interiors, it highlights the fusion of form and purpose. The narrow and elongated profile ensures versatility, whether placed on a dining table, console, or shelf.

This vase isn't merely a vessel for flowers—it's a sculptural piece that enriches any space with its understated elegance and thoughtful craftsmanship.







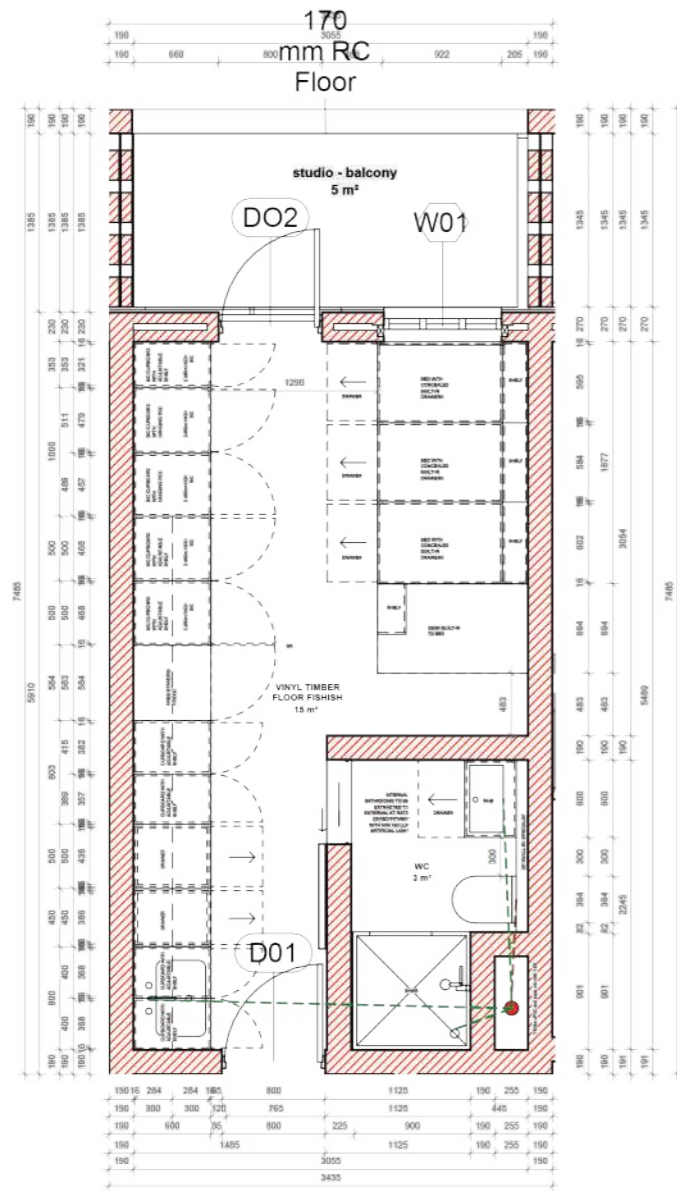
09 TECHNICAL DRAWINGS

BRIEF

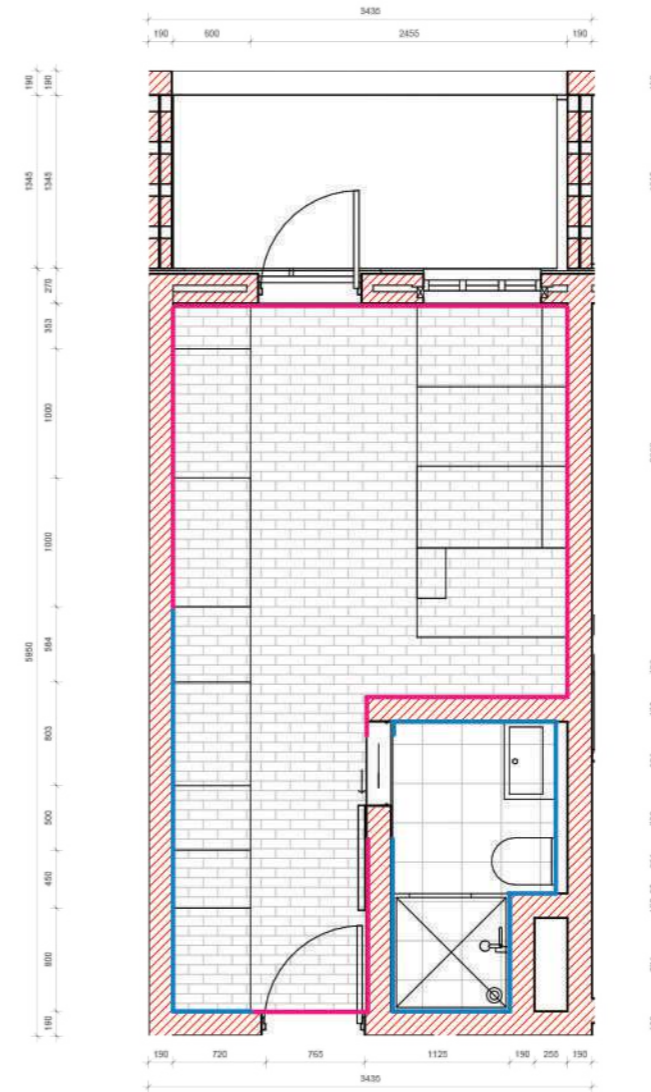
Draw up the technical drawings for Fibonacci student living

CONCEPT

Technical drawings serve as the universal language of design and construction, bridging the gap between conceptual vision and practical execution. They are fundamental tools that transform abstract ideas into buildable realities through precise, standardized documentation. In architecture and construction, technical drawings are not merely representations but rather detailed instructions that ensure accuracy, safety, and successful project delivery.



1 - CONSTRUCTION LAYOUT PLAN
1 : 50

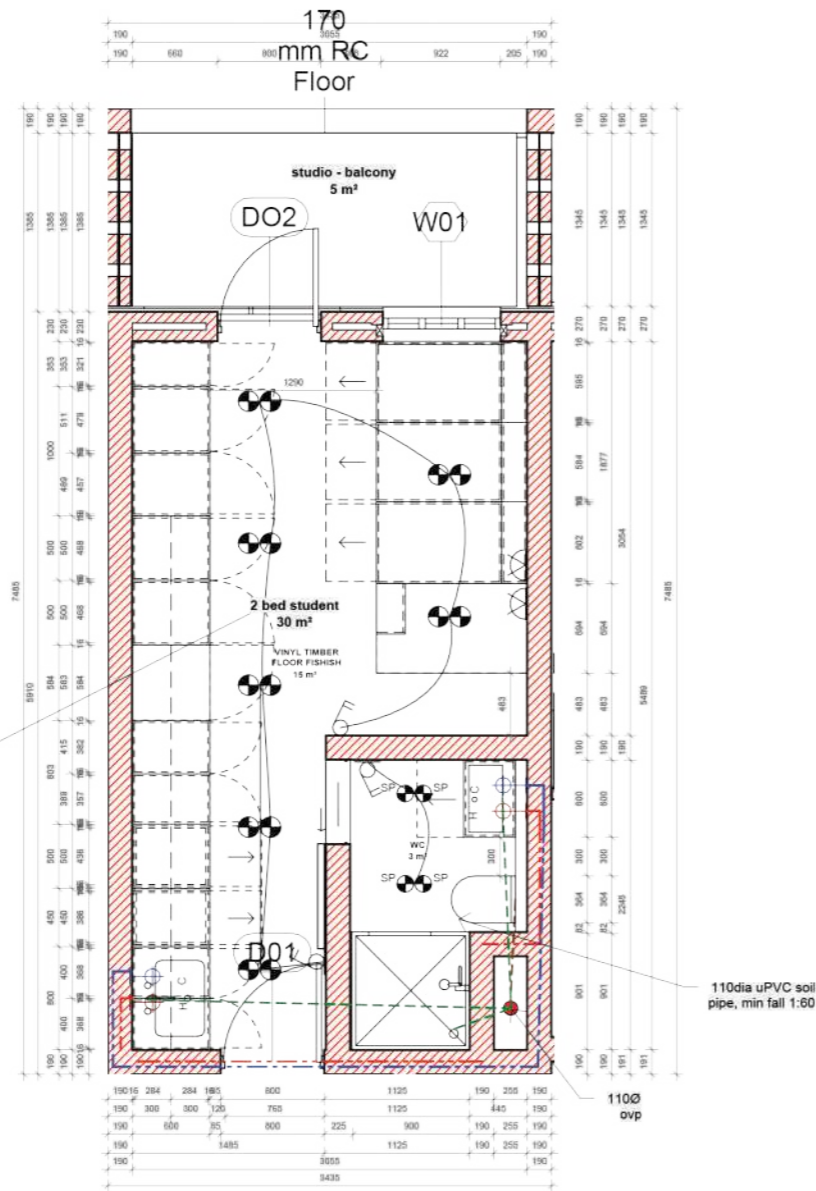


2 - WALL AND FLOOR FINISHES PLAN
1 : 50

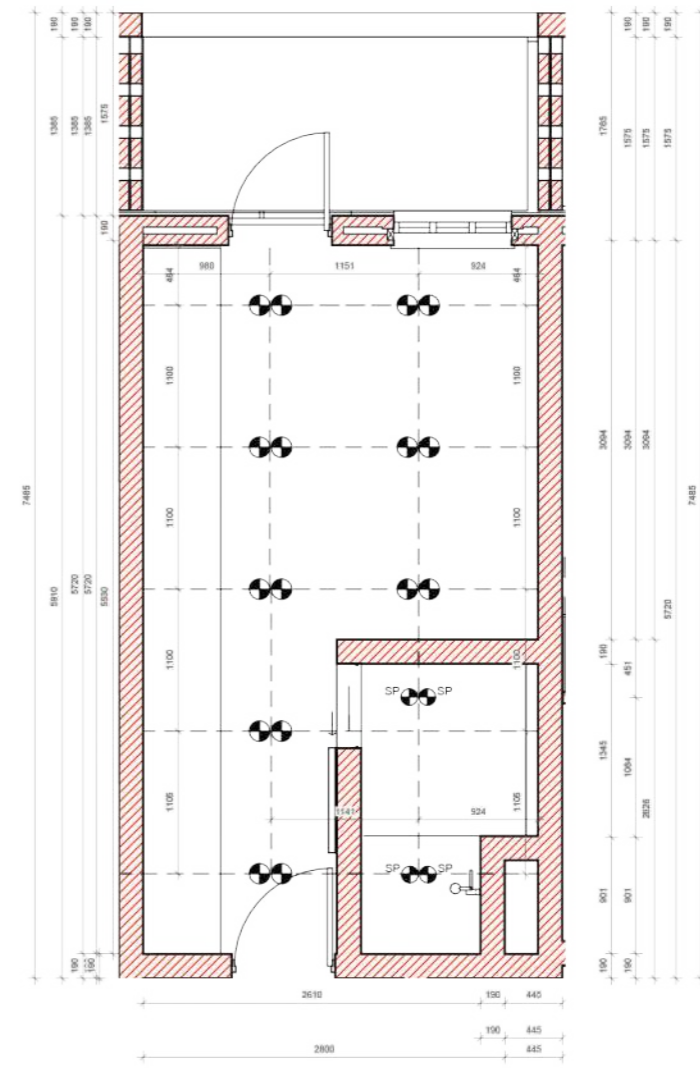
No.	Description	Date

CODE	STATUS	SUITABILITY DESCRIPTION	PURPOSE OF ISSUE

PROJECT Fibonacci		CLIENT Heriot REIT	
SHEET Studio apartment technicals		Date 2024/08/21	Project number 2023_3A
		Scale (@ A3) 1 : 50	
		Drawing Number 9	REV
		Author	
		Checked by	
		Checker	

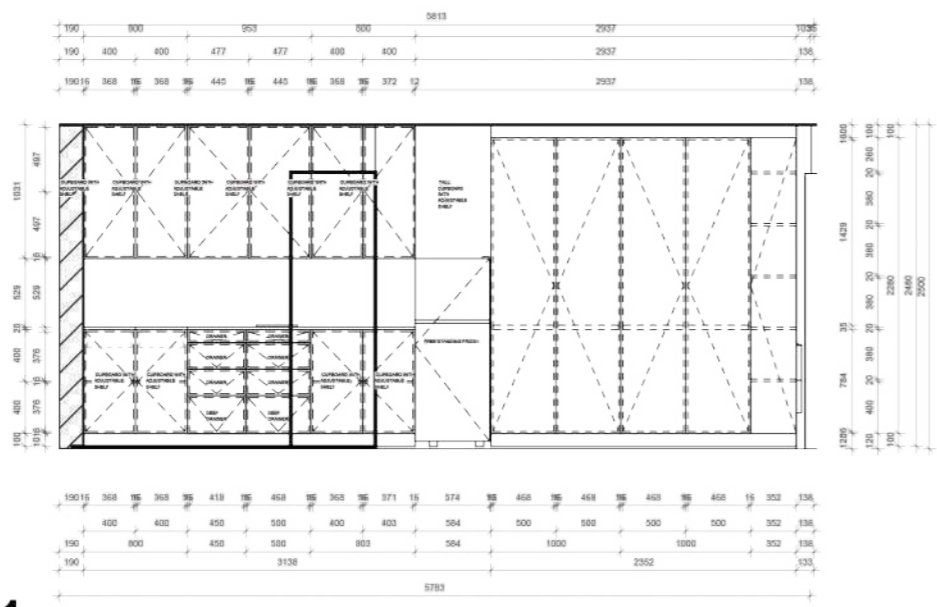


1 - WATER RETICULATION AND ELECTRICAL PLAN
1 : 50

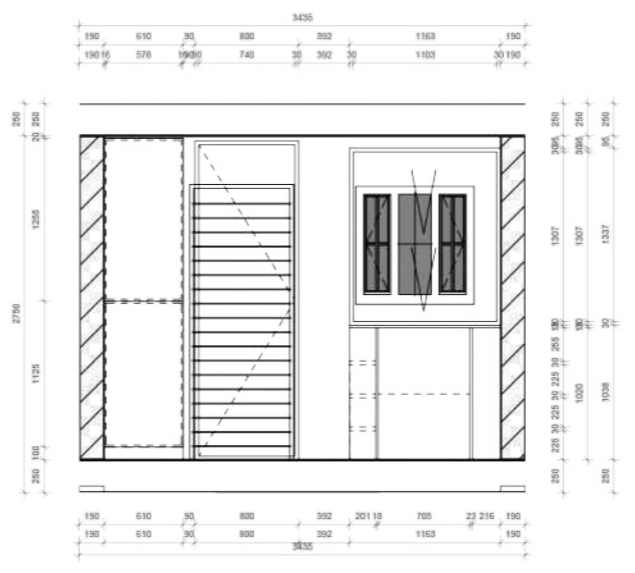


2 - REFLECTED CEILING PLAN
1 : 50

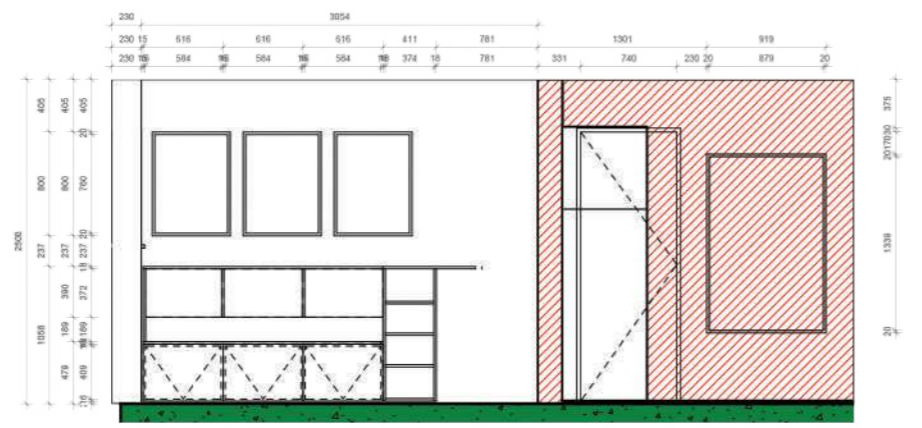
	No.	Description	Date	PROJECT Fibonacci		CLIENT Heriot REIT		
				SHEET Studio apartment technicals Copy 1		Date 2024/08/21	Project number 2023_3A	Scale (@ A3) 1 : 50
						Drawn by Author	Drawing Number 13	REV
						Checked by Checker		



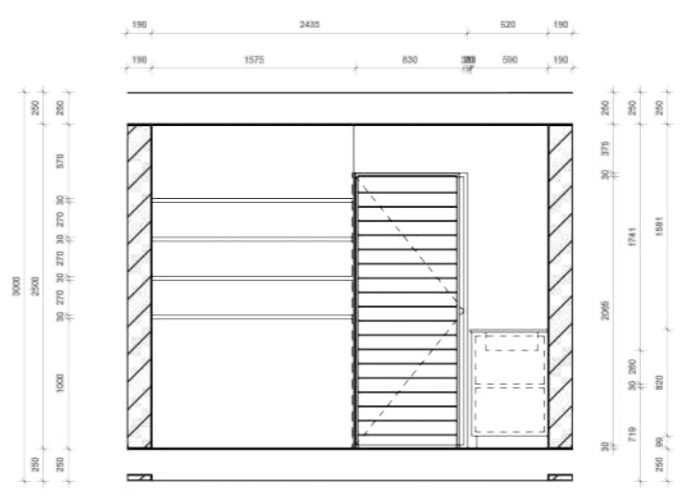
1 - a
1 : 50



1 - b
1 : 50



1 - c
1 : 50



1 - d
1 : 50

	No.	Description	Date	PROJECT		CLIENT		
				Fibonacci		Heriot REIT		
				SHEET		Date	Project number	Scale (@ A3)
				ELEVATION		2024/08/21	2023_3A	1 : 50
						Drawn by	Drawing Number	REV
						Author	10	
						Checked by		
						Checker		