

ELEANOR
HOLYOAKE





9.

Rhythmos - 1618 PG Bison Student competition

23.

Fibonacci - Student accommodation

35.

On Q Apartment - Residential design

43.

House Holyoake - Residential design

49.

House Hastingh - Residential design

53.

House Bennet - Residential design

57.

Namibia Exclusive - 5 hour design challenge

63.

Everything Around - Product design

73.

Chair No.2 - Product design

81.

Technical drawings



INTRODUCTION

Hello, nice to meet you. This is my story:

At the age of 6, every weekend you would find me pushing wardrobes, doll houses, side tables and my bed across my room desperate to find the best look and best suiting layout for my 6 year old self. The bed would inevitably be pushed up against the wall to provide me with enough space for me to play with my toy horses and dolls.

Later on I discovered that moving my room around was a way to play. I would sketch out floor plans and begin my weekends work making my room the calm safe place i needed. Thus began my absolute passion for making the spaces around me not only functional and beautiful, but to make one feel something.

This 6 year old self has stayed with me. Always making enough space to play.



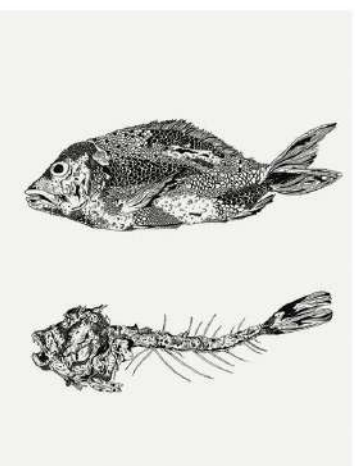
RYTHMOS

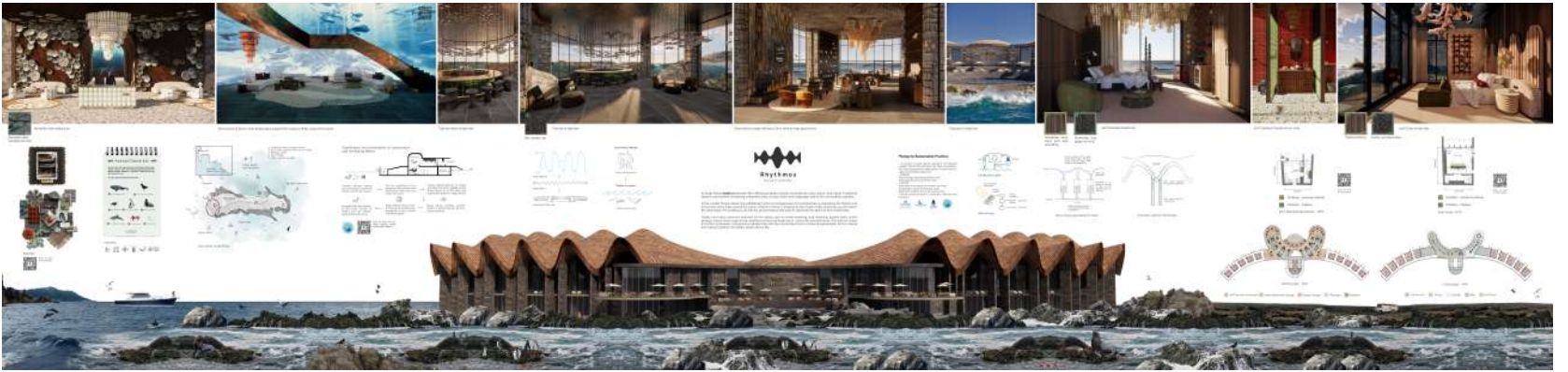
PG bison 1618 student competition

In South Africa, rhythm permeates life, reflecting a deep cultural connection to music, dance, and nature. Traditional dances and rhythmic drumming celebrates unity and joy, while local languages add to the rich auditory tapestry.

In the context of Dyer Island, the undulating rhythm is homogeneous. The architecture is inspired by the rhythm and movement of the tides around the island, while the interior is inspired by the rhythm of life under the sea and within the tidal pools. The building is set into the ground below tide level to celebrate the ebb and flow of the tides.

Guests can enjoy numerous activities on the island, such as whale watching, bird watching, guided walks to the penguin colony, shark cage diving, amphibious boat and kayak tours, and a fully stocked library. This intrinsic sense of rhythm symbolizes a harmonious relationship with the environmental and cultural rhythms that define South African life.







Hotel Reception



LED screens in Dome room displaying live feed from cameras off the coast of the island

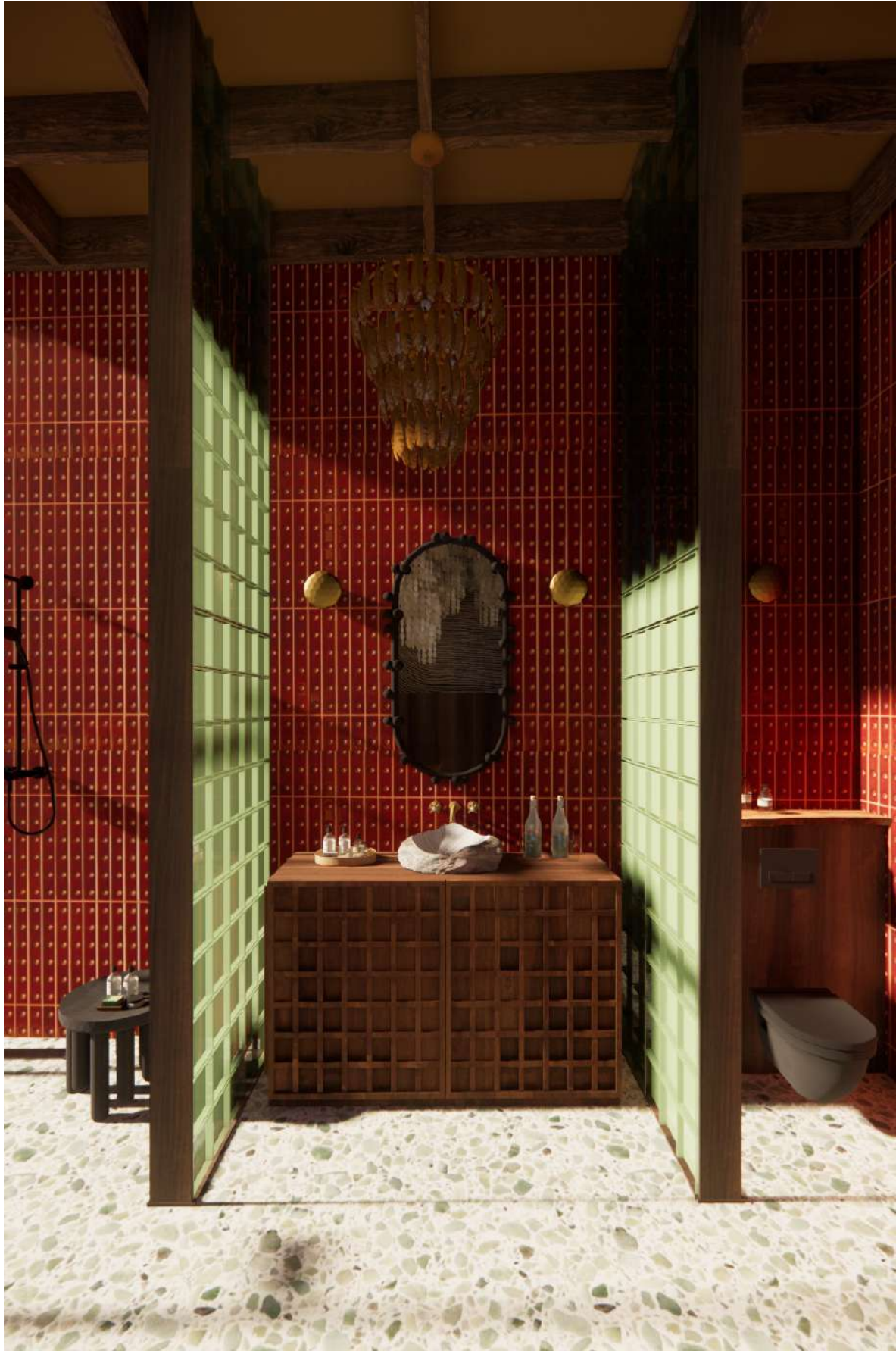


Tidal bar at high tide.



Observation lounge and library. Deck seen through glass doors









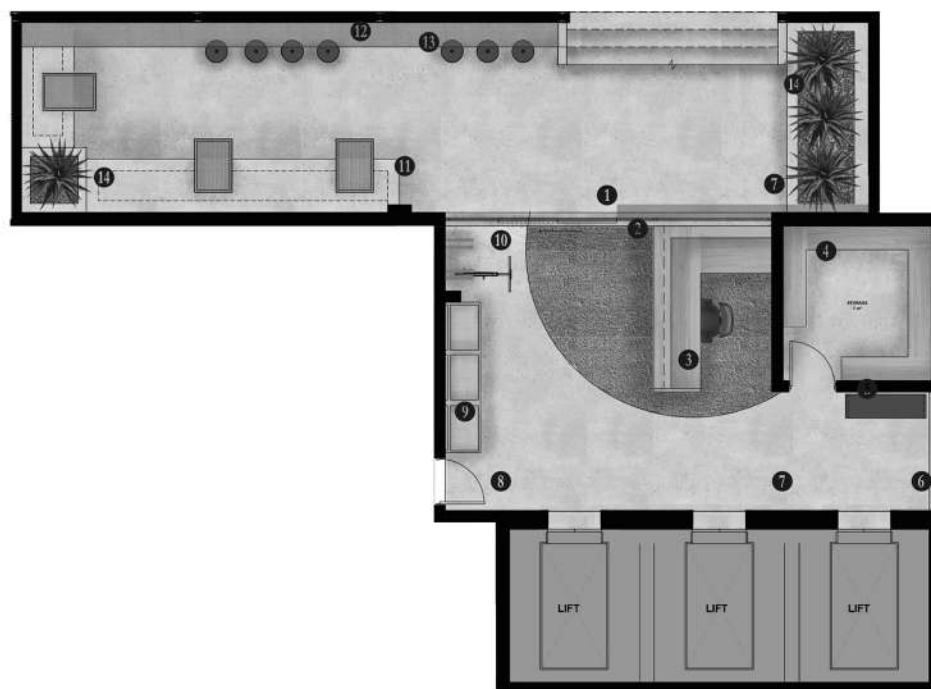
FIBONACCI

Student accommodation

The concept is inspired by students' innate need and desire for play. In our fast-paced world, it's essential to create calm, quiet study spaces that accommodate all types of learners. Beyond study areas, the design also includes dedicated spaces where students can engage in play and relaxation.

The material palette draws inspiration from the Cape aloe plant, integrating natural textures and colors that evoke a sense of tranquility and connection to nature.

MEGAN GRANT



Reception and Exterior plan - NTS

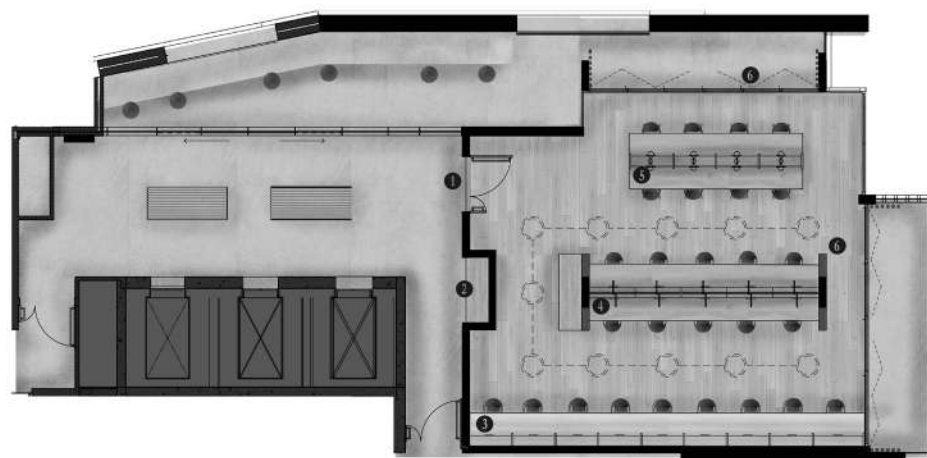
1. Security biometric gate.
2. Coir PVC rubber entrance matting.
3. reception Desk
4. storage room for deliveries ect.
5. metal bench seating.
6. mirror.
7. perforated steel wall cladding.
8. notice board pegs.
8. built in seating.
9. bike rack storage.
10. concrete bench with perforated steel tables bolted to the floor.
11. perforated steel bar counter rop.
12. Tolix Bar Stool - Chair Crazy.
13. Plant box with Aloes that have red flowers in May - August



1. Jasmine in plant boxes on the exterior wall growing up steel wire for shade and privacy. 2. Tolix Bar Stool - Chair Crazy bolted to the floor. Bar table top is perforated steel. 3. concrete bench and perforated steel tables are bolted to the floor. the tables break up the benches to restrict people sleeping here during the night



A) Co-Working space plan - NTS



B) Study Centre plan - NTS

A) 1. Entrance. 2. Glass brick wall. 3. Desk seating with half dividers, desk lighting and power. 4. Banquet seating with task lighting and power underneath table. 5. Double desk seating with half dividers, desk lighting, and power

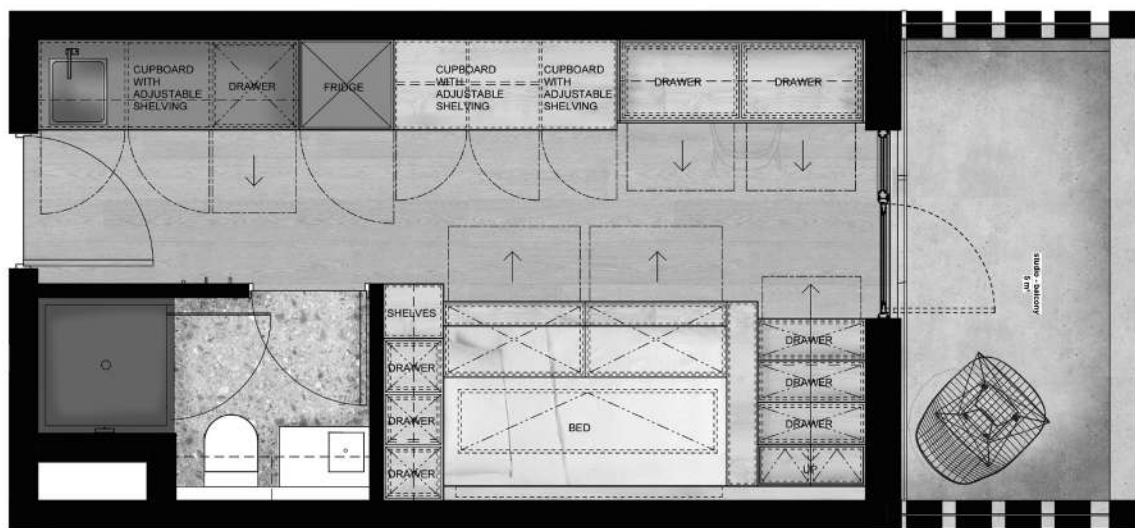
B) 1. Entrance. 2. Bench seating in lift lobby. 3. Desk seating with half dividers, desk lighting and power. 4. Double desk seating with Ribbed glass dividers, desk lighting and power. 5. Double desk seating with lighting and power



Left: Co-working booth. Right: Study Centre desks



Studio Apartment Axometric - NTS



Studio Apartment Plan - NTS





1. Desk storage with adjustable shelves.
2. Cork pin board with fabric upholstery
3. X2 Drawers.
4. Grooved slats for desk top, shelves and drawers to be moved up or down depending on the students needs.
5. Custom lamp that hooks onto the grooves.





ON Q APARTMENT

Residential Design

Apartment 602 sits upon the localised streets of De Waterkant area. The apartment borrows influence from old French chateaus and English cottages to create a sense of returning home.

Because this is a show apartment, the colour pallet plays with the neutral tones to allow a broader variety of different furniture pieces to be used in the space, thus aids in making it resistant to evolving trends. The lighter colours also create surfaces for light to bounce off from making the room appear brighter and spacious.

To compete with the small space, furniture, built in cupboards and the bathroom vanity have been lifted off the floor to create an illusion that the floor space is bigger. A combination of open and hidden shelves provides the buyer with a verity of storage which is vital in a smaller space.













HOUSE HOLYOAKE

Residential Design

With views of Table Mountain and the Cape Town City Bowl, House H is a holiday home for relaxation, decompression, and reflection.

On the ground floor, the kitchen is light and airy, featuring a spacious kitchen and pantry. Folding doors open out to a patio and “braai” area, setting the stage for many gatherings. The first floor immerses you in a deep mood of burnt oranges and pops of red that mirror the mountain’s burning. This sets the tone for philosophical conversations and readings about life. An office is tucked behind the stairwell, offering a view over the city.

Moving to the second floor, light materiality induces a feeling of ease. The bedroom provides a sense of cleanliness and rest. A jute carpet covers the floor, grounding us with its earthy texture that echoes the surrounding views. Lastly, a rooftop garden awaits. Walking through the greenhouse outside, you can overlook the bustling city below. Pots and beds overflow with flowers and shrubbery, attracting butterflies and bees.







A watercolor illustration of a large, light pink flower with several petals. In the center of the flower, two human faces are depicted, looking forward. The faces are rendered in a soft, sketchy style. To the right of the main flower, there is a smaller, vibrant red flower. The background is a mix of muted green and brown tones, suggesting foliage and earth.

HOUSE HATTINGH

Residential Design

The project brief, provided by a client looking to subdivide their property in Newlands, Cape Town, entailed designing a three-bedroom, four-bathroom home that reflects the client's chosen style while allowing space for my creative interpretation. The final renders are intended to showcase the proper-

a cohesive and inviting vision that speaks to prospective buyers.







HOUSE BENNET

Residential Design

The brief called for a cohesive design of both the exterior and interior of the clients' new homes, thoughtfully aligned with the architectural guidelines of the estate and the clients' desired aesthetic.

The layout centers around a serene courtyard, providing a sheltered retreat for residents during Knysna's windy season. On calmer days, rotating doors open up to create a seamless indoor-outdoor living space, offering expansive views over the Knysna lagoon.



Above: upstairs study. painting by Peggy Kuiper.
Right: detail of kitchen with Matisse brown marble countertops and pocket folding cabinet doors with white handmade tile backsplash.

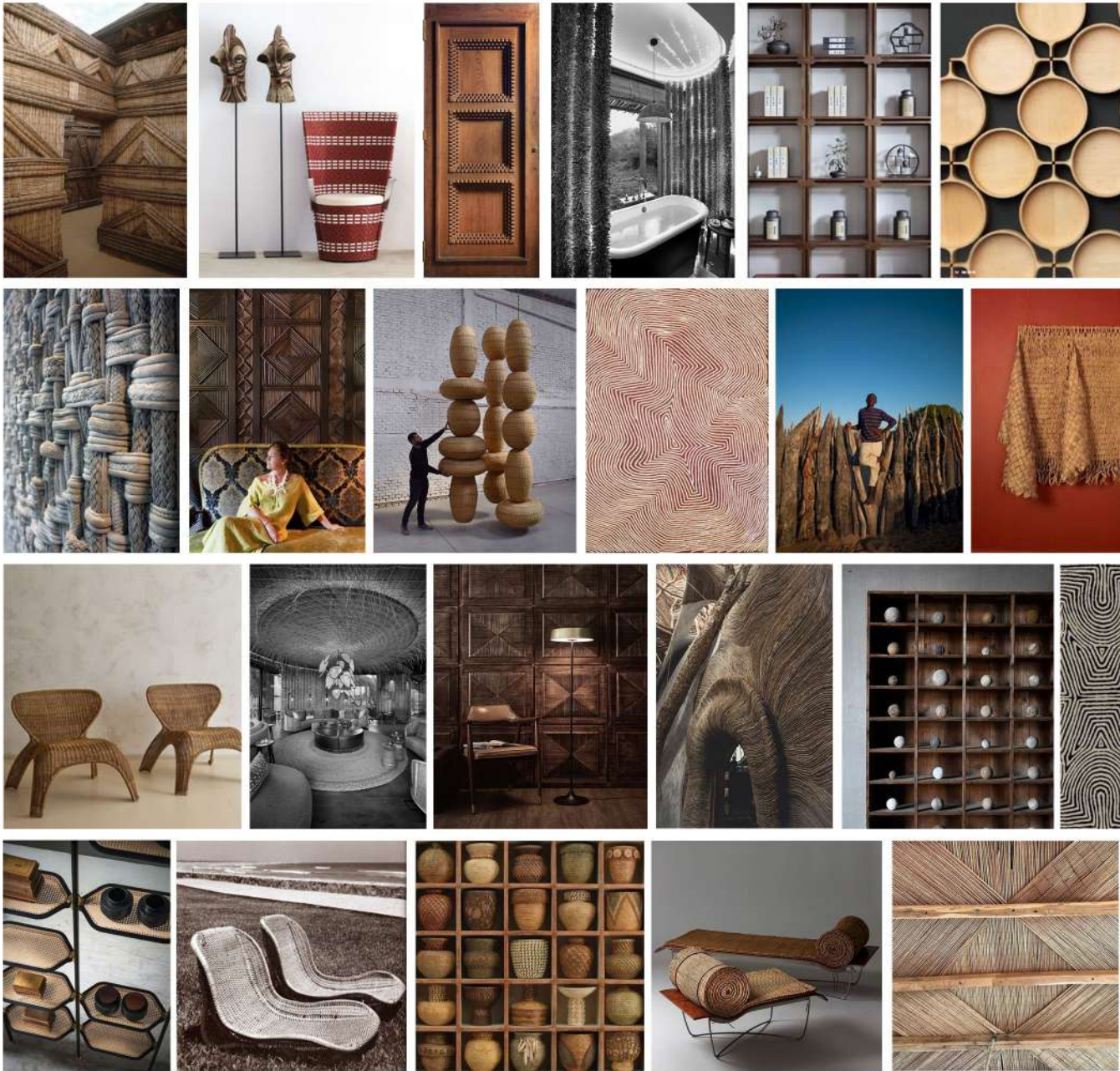




NAMIBIA EXCLUSIVE

Residential Design

The brief was to design a bedroom for a luxury Namibian game lodge situated in the Brandberg area. This was a design challenge to be completed within 5 hours with a mood board and materiality.







Namibia Exclusive digital materials board



EVERYTHING AROUND

Product design

As designers, we have a vital responsibility to create sustainable products with the future in mind. This means considering the intended lifespan of the pieces we create, as well as their end-of-life journey. We must ask ourselves: where will the product ultimately end up? And how can we ensure that it contributes to a healthier, more sustainable future?

Everything Around, uses reclaimed and off-cut pieces of wood from Renove Studios; a furniture workshop that shares our commitment to sustainability. By creatively piecing together these materials, we're able to craft a beautiful and durable chair that stand the test of time. they are assembled using mortise, tenons, and screws, ensuring longevity and quality. In the spirit of sustainability, we've made a conscious decision to only use natural plant based oils to let the wood age naturally, taking on unique characteristics and acquiring a personality of its own. Reclaimed wood is a special material, leaving no trace after decomposition and offering an eco-friendly alternative to traditional furniture.

Iris Kæmpferi.







HOUSE

AND LEISURE

Vol. 10 : Spring 2023



grow
spring to life

R145 (incl. VAT)
\$15 / €14 / £14





Decorex Cape Town left without pausing at The Hatch, a physical and poetic platform for dialogue and collaboration. Bielle Bellingham, executive creative director of Decorex Africa, invited the design community to contribute radical chair designs made exclusively from materials that are reused, biodegradable or easily recycled. Bielle asks, 'What if we designed new behaviours instead of new products? How

emphasising quality, craftsmanship, and sustainability over excess?' We explore some of the featured designs and processes. **The Repair Chair** (previous spread, left), by Lauren Shantall, saved a broken, second-hand rocking chair. 'I wanted to use materials that were on hand, so everything was left over from previous projects.' **Lost and Found** (previous spread, right), by Farhana Monier, reminds us

goes to waste. The student designed a chair using timber offcuts, finished with all-natural oils. 'I would love for this design to inspire others to see treasure in lost and forgotten bits and pieces.' **Everything Around** (above left), by Eleanor Holyoake, emphasises the role of designers in promoting sustainable practices. The student collaborated with Renove Studios to create a chair made



Title
Everything Around
Brand
n/a
Product
Chair design
Business sector
Furnishings / Decor
Entry ID
YA4F-24-12918



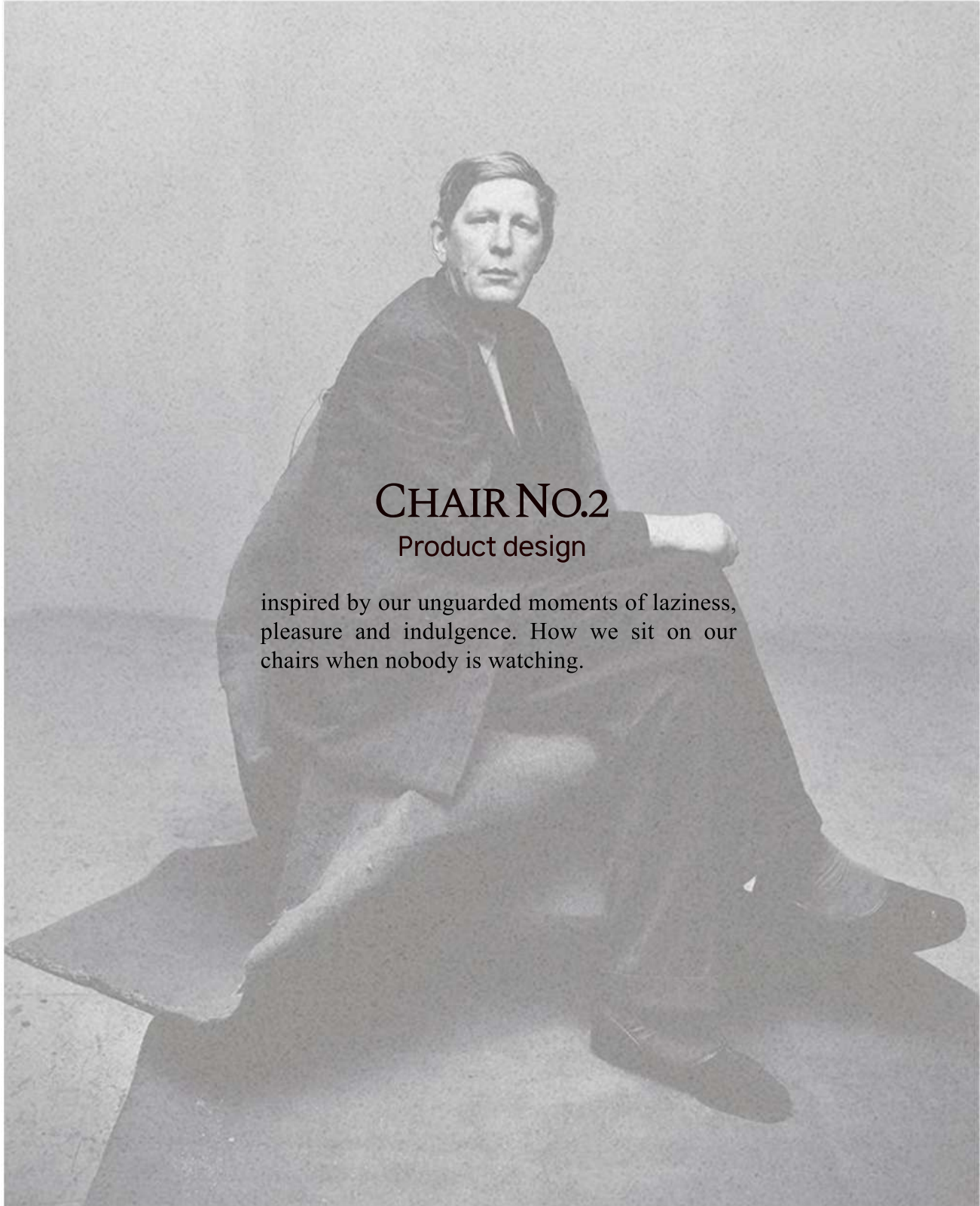
CREDITS
College/University
Design Time (PTY) Ltd
Lecturer
Anel Joubert
Student
Eleanor Holyoake



LOERIES AFRICA MIDDLE EAST

CONNECT WITH US

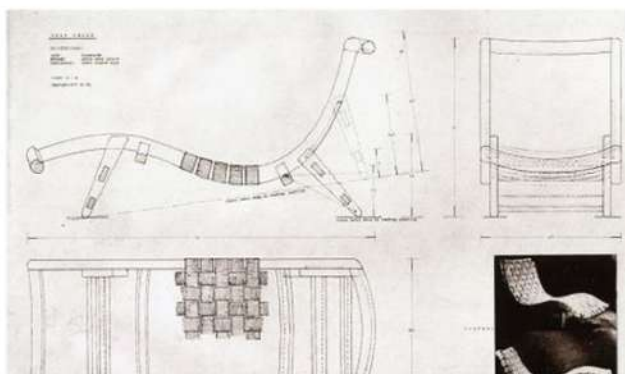
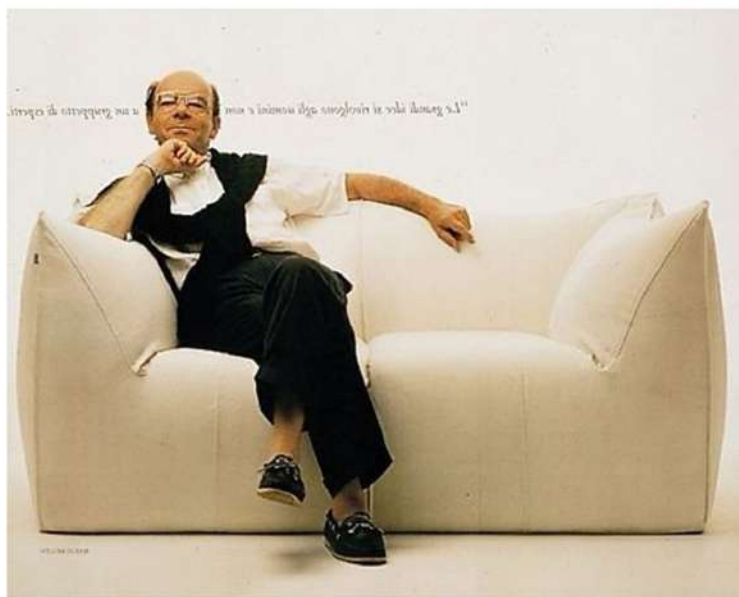
Finalist for Loeries Student Furniture Design Category 2024



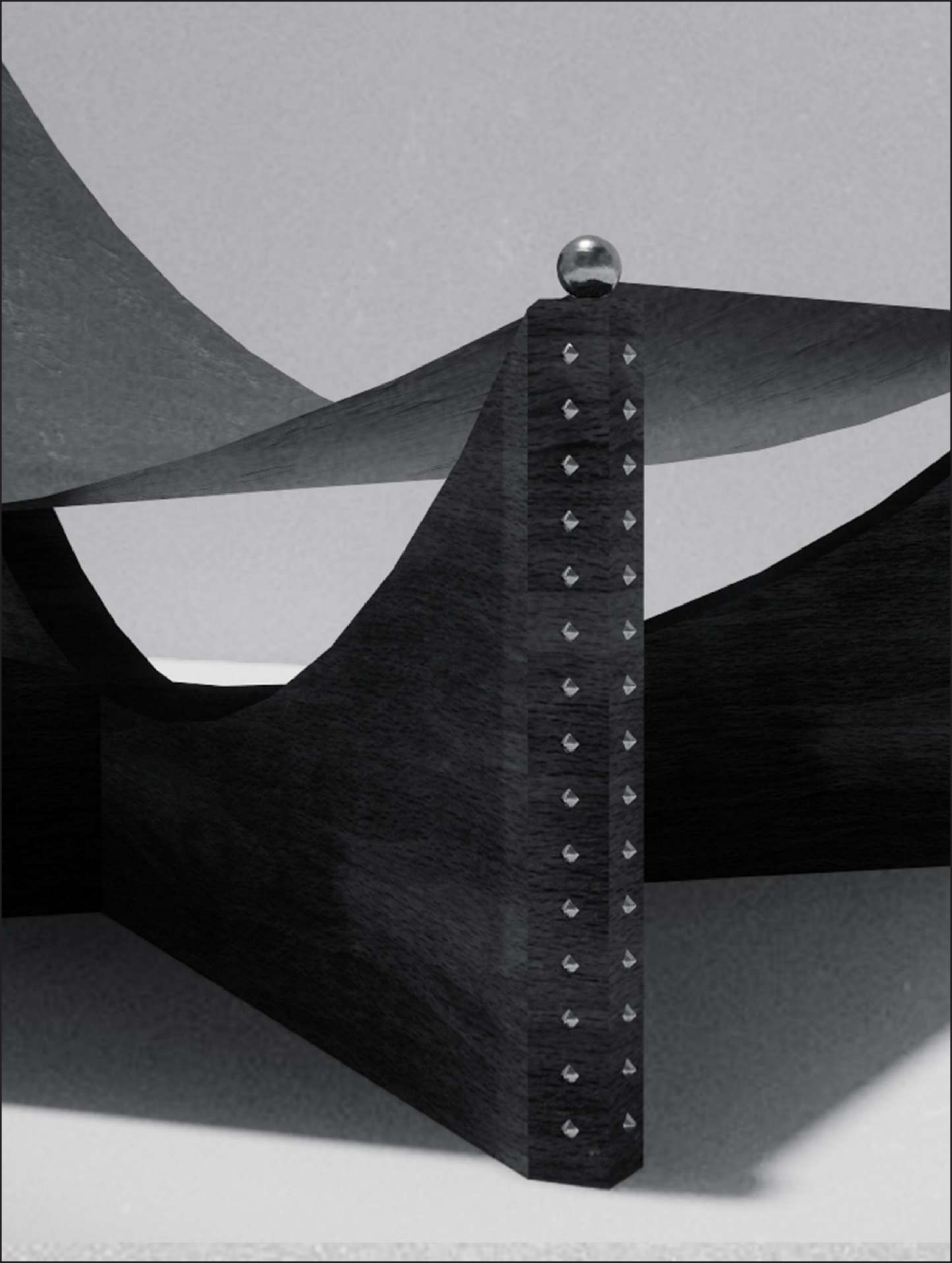
CHAIR NO.2

Product design

inspired by our unguarded moments of laziness,
pleasure and indulgence. How we sit on our
chairs when nobody is watching.







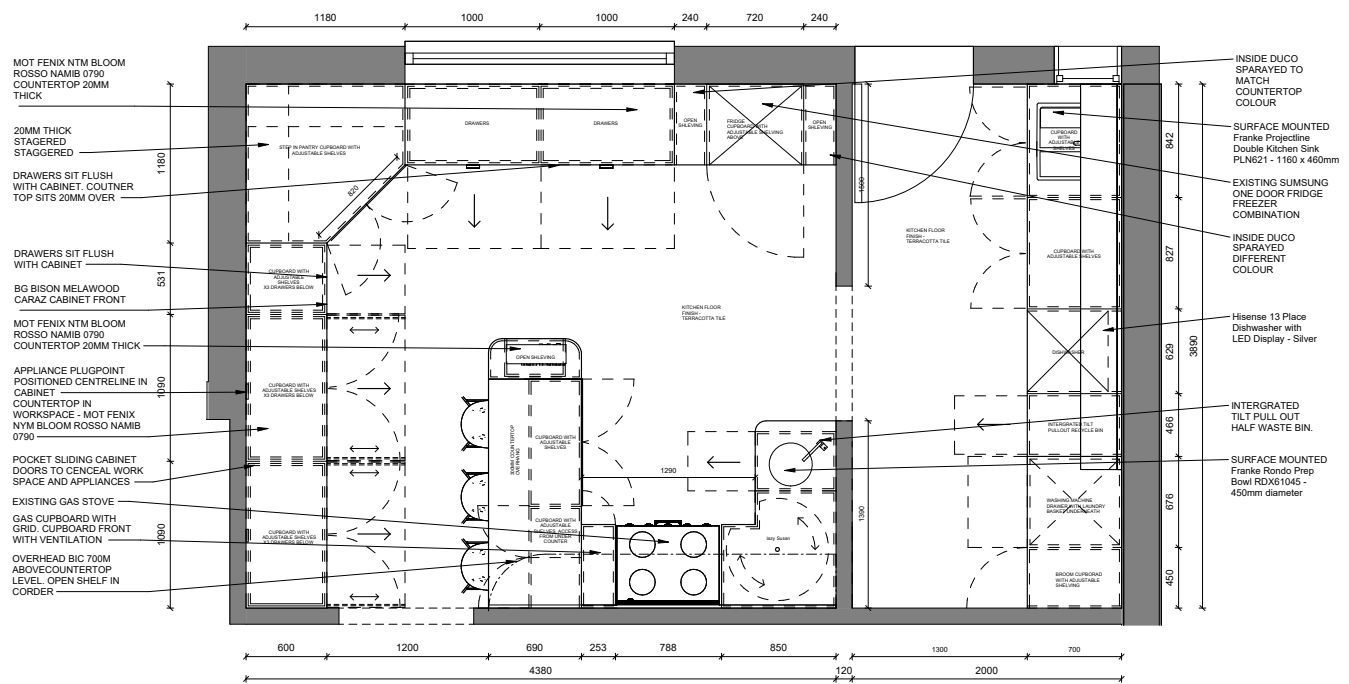
How we sit on our chairs
when nobody is watching
when we really get comfortable.

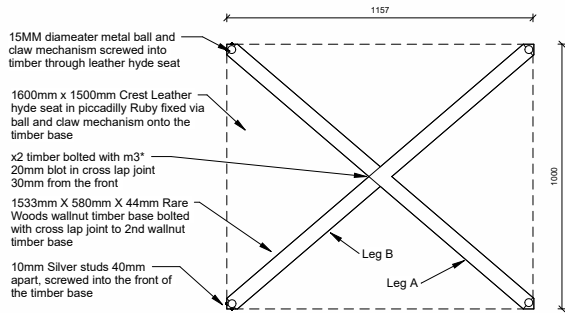




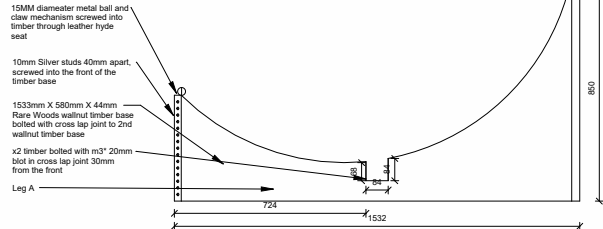


TECHNICAL DRAWINGS





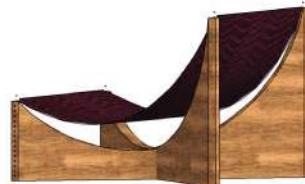
1 PLAN
1:15



2 LEG A ELEVATION
1:15



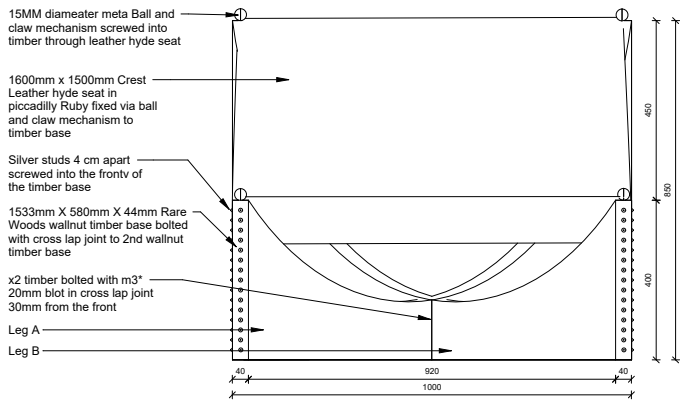
3 3D FRONT VIEW



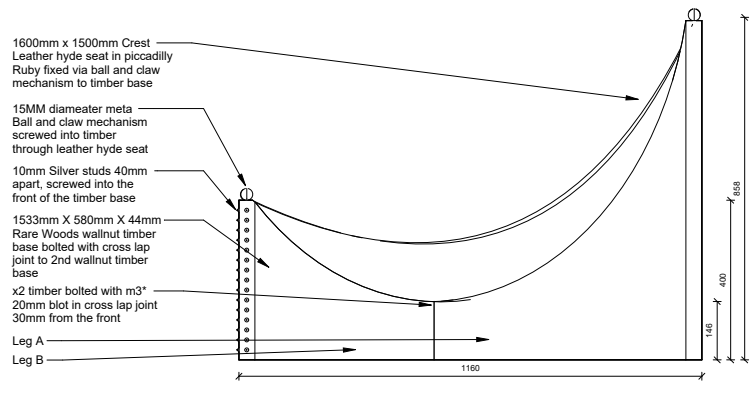
5 3D BACK VIEW

No.	Description	Date

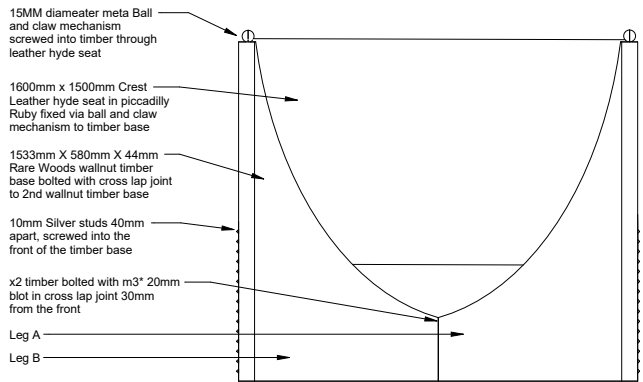
PROJECT		CLIENT	
CHAIR NO.1		ELEANOR HOLYOAKE	
Date	Project number	Scale (@ A3)	
26 07 2024	Project 1	1 : 15	
Drawn by	Drawing Number	REV	
EH	1		
Checked by			
EM			



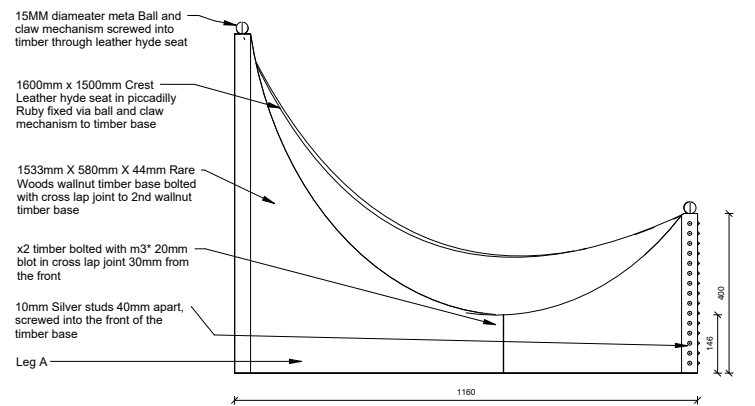
1. FRONT ELEVATION
1:10



3. LEFT ELEVATION
1:10



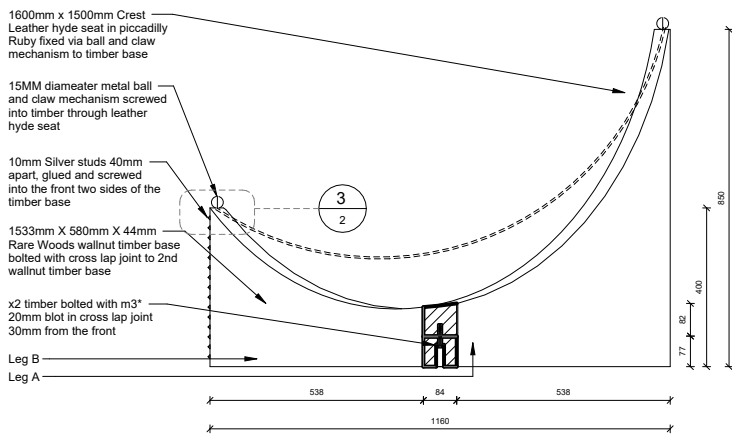
2. BACK ELEVATION
1:10



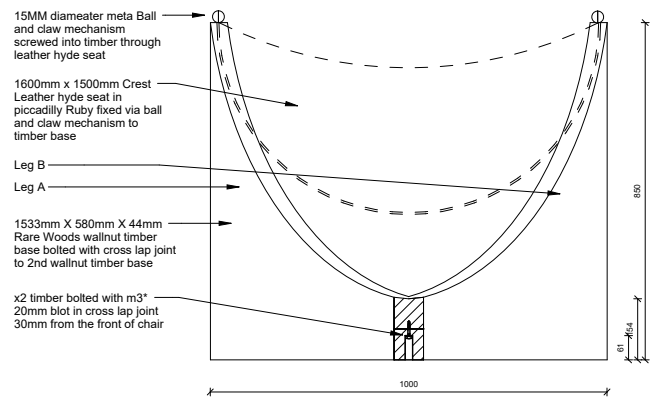
4. RIGHT ELEVATION
1:10

No.	Description	Date

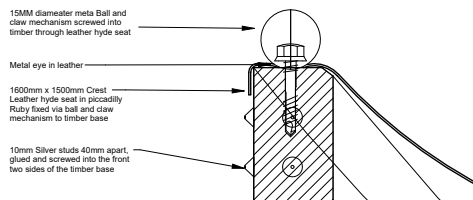
PROJECT	CHAIR NO.1			CLIENT	ELEANOR HOLYOAKE				
SHEET	SHEET 3			Date	26 07 2024	Project number	Project 1	Scale (@ A3)	1:10
				Drawn by	EH	Drawing Number	3	REV	
				Checked by	Elzabe				



1. SIDE SECTION
1:10



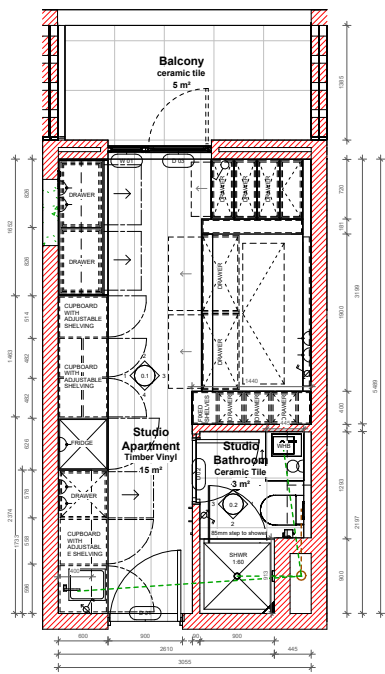
2. FRONT SECTION
1:10



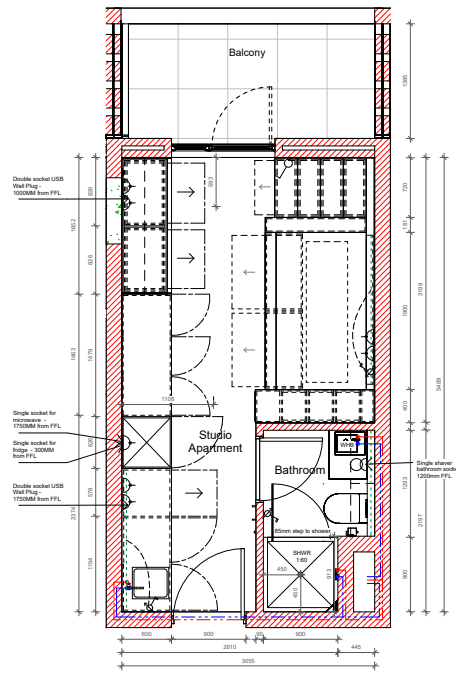
3. BALL AND CLAW CALL OUT
1:2

No.	Description	Date

PROJECT		CLIENT		
CHAIR NO. 1		ELEANOR HOLYOAKE		
SHEET	SHEET 2	Date	Project number	Scale (@ A3)
		26 07 2024	Project 1	As indicated
		Drawn by EH	Drawing Number	REV
Checked by EM	2			



1. TYPICAL STUDIO - construction layout
1:50



2. TYPICAL STUDIO - electrical and water
1:50

LEGEND

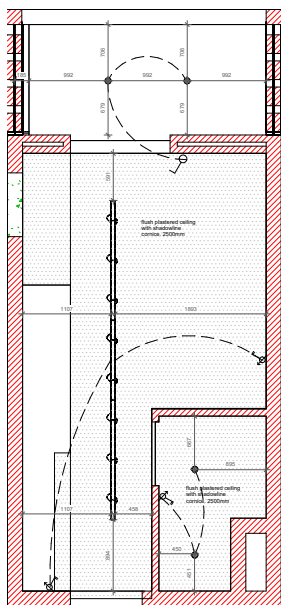
	Double lever dimmer switch - 1200MM FFL unless otherwise specified
	Single lever switch - 1200MM FFL unless otherwise specified
	Double power socket outlet - Height specified on plan
	Single power socket outlet - 300mm FFL unless otherwise specified
	Single power shower socket outlet - 1200mm FFL unless otherwise specified
	LED recessed downlights
	Hot water point (red)
	Cold water point (blue)
	LED strip light

ELECTRICAL AND WATER DRAINAGE IS SCHEMATIC ONLY

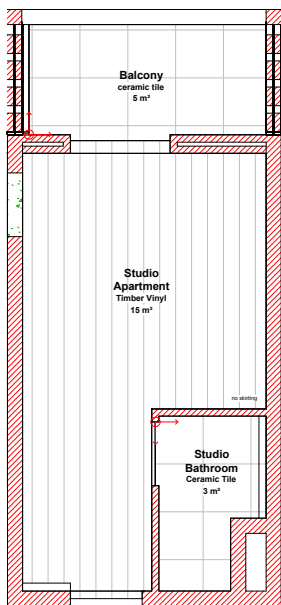
NOTE: ALL DRAINAGE AND WATER TO BE DESIGNED BY APPOINTED PLUMBING CONSULTANT

NOTE: ALL ELECTRICAL TO BE DESIGNED BY APPOINTED ELECTRICAL CONSULTANT

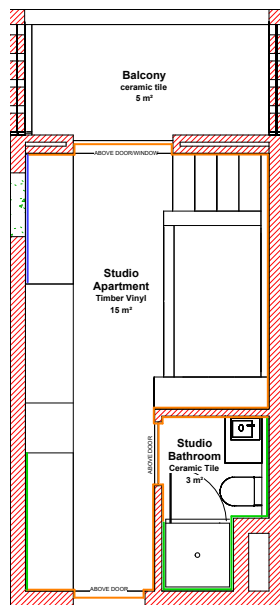
No.	Description	Date	PROJECT		CLIENT		
			Fibonacci		Eleanor Holyoake		
			PROJECT		Date	Project number	Scale (@ A3)
			SHEET		24/11/15	09	As indicated
			PLANS - CONSTRUCTION + WATER AND ELECTRICAL		Drawn by	Drawing Number	REV
			CODE	STATUS	EH	ID - 101	
			SUITABILITY DESCRIPTION	PURPOSE OF ISSUE	Checked by		
					EM		



1 3. TYPICAL STUDIO - Ceiling plan
1:50



2 4.1 TYPICAL STUDIO - Floor finishes plan
1:50



3 4.2 TYPICAL STUDIO - Wall finishes plan
1:50

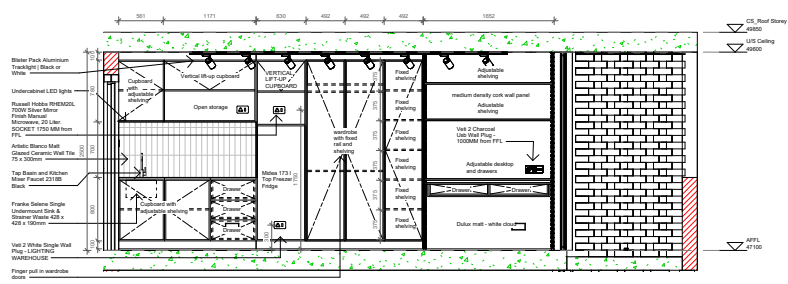
FINISHES LEGEND

	Timber vinyl flooring - cross grained medium grain flooring, flooring underneath
	Ceramic tile - concrete installation non slip - white tile
	Dulux paint - white cloud
	Artistic Stone Multi Coated Ceramic Tile 75 x 300mm
	Medium density cork

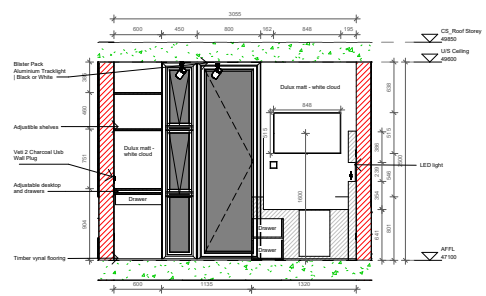
No.	Description	Date

CODE	STATUS	SUITABILITY DESCRIPTION	PURPOSE OF ISSUE

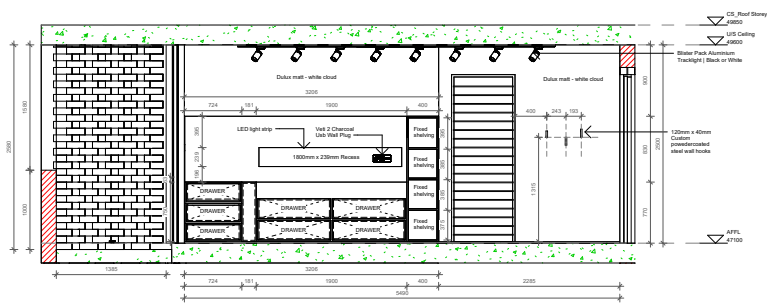
PROJECT	Fibonacci			CLIENT	Eleanor Holyoake				
SHEET	PLANS - CEILING AND FINISHES			Date	24/11/15	Project number	09	Scale (@ A3)	As indicated
				Drawn by	EH	Drawing Number	ID - 102	Checked by	EM
									REV



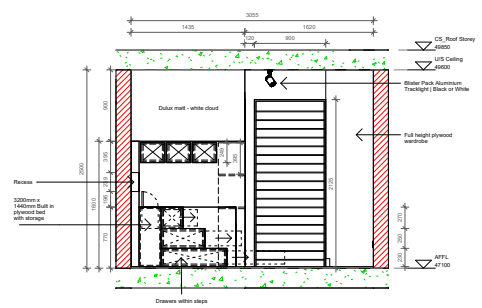
1 Elevation 2 - TYPICAL STUDIO BEDROOM A
1:50



2 Elevation 2 - TYPICAL STUDIO BEDROOM B
1:50

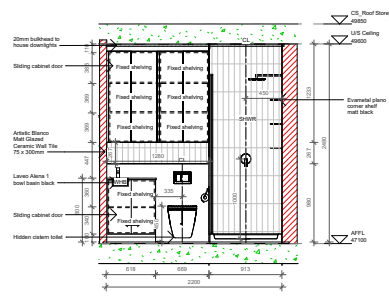


3 Elevation 2 - TYPICAL STUDIO BEDROOM C
1:50

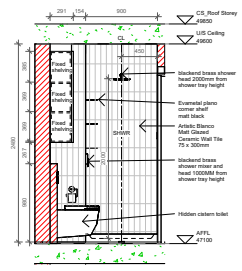


4 Elevation 2 - TYPICAL STUDIO BEDROOM D
1:50

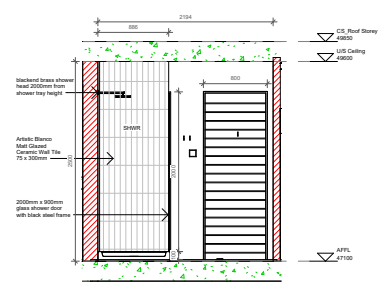
No.	Description	Date	PROJECT		CLIENT		
			Fibonacci		Eleanor Holyoake		
			SHEET		Date	Project number	Scale (@ A3)
			ELEVATIONS - STUDIO APARTMENT		24/11/15	09	1:50
					Drawn by	Drawing Number	REV
					EH	ID - 201	
					Checked by		
					EM		



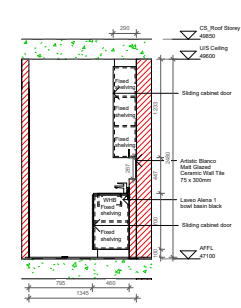
1 Elevation 1 - TYPICAL STUDIO BATHROOM A
1:50



2 Elevation 1 - TYPICAL STUDIO BATHROOM B
1:50

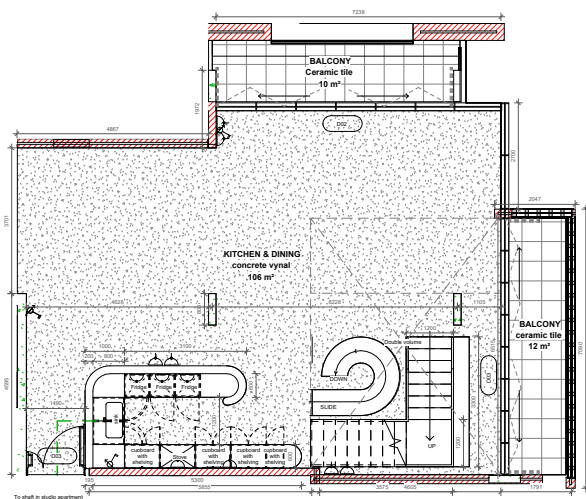


3 Elevation 1 - TYPICAL STUDIO BATHROOM C
1:50

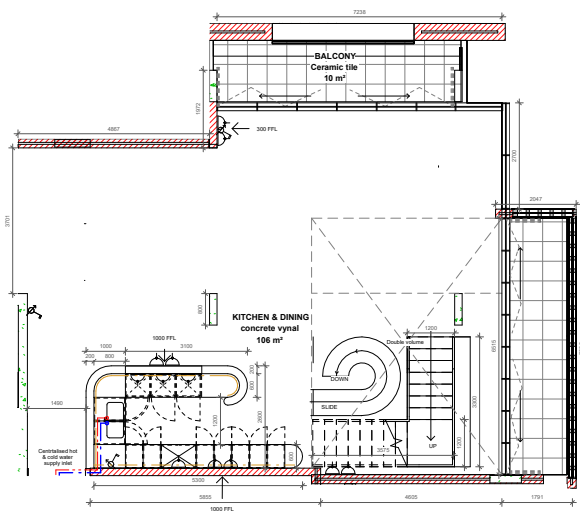


4 Elevation 1 - TYPICAL STUDIO BATHROOM D
1:50

No.	Description	Date	PROJECT		CLIENT		
			Fibonacci		Eleanor Holyoake		
			SHEET		Date	Project number	Scale (@ A3)
			ELEVATIONS - BATHROOM		24/11/15	09	1:50
					Drawn by	Drawing Number	REV
					EH	ID - 202	
					Checked by		
					EM		



1. CONSTRUCTION PLAN
1:100



2. ELECTRICAL AND PLUMBING
1:100

LEGEND

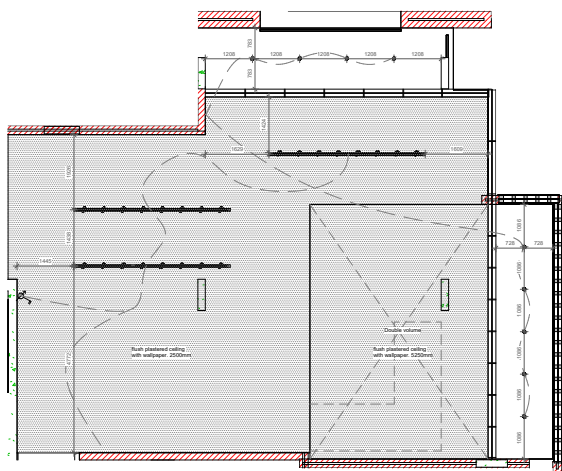
	Double lever dimmer switch - 1200MM FFL, unless otherwise specified
	Double power socket outlet - Height specified on plan
	Single power socket outlet - 200mm FFL, unless otherwise specified
	LED recessed downlight
	Hot water point (red)
	Cold water point (blue)
	LED strip light

ELECTRICAL AND WATER DRAINAGE IS SCHEMATIC ONLY

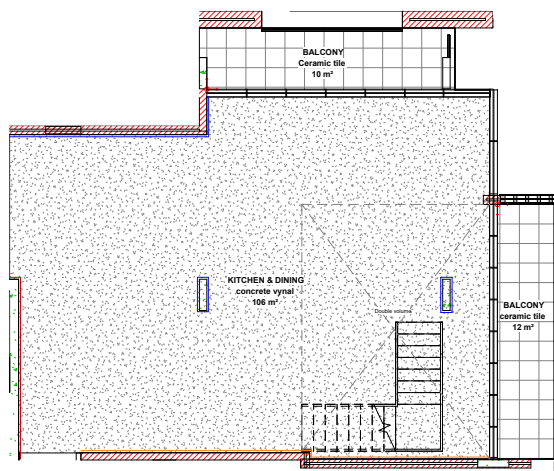
NOTE: ALL DRAINAGE AND WATER TO BE DESIGNED BY APPOINTED PLUMBING CONSULTANT

NOTE: ALL ELECTRICAL TO BE DESIGNED BY APPOINTED ELECTRICAL CONSULTANT

	No.	Description	Date	PROJECT				CLIENT			
				Fibonacci				Eleanor Holyoak			
				SHEET				Date	Project number	Scale (@ A3)	
				CODE	STATUS	SUITABILITY DESCRIPTION	PURPOSE OF ISSUE	CONSTRUCTION AND WATER+ELECTRICAL	24/11/15	(9)	1 : 100
								Checked by	Drawing Number		REV
								EM	ID - 103		



3. REFLECTED CEILING PLAN
1:100



4. WALL AND FLOOR FINISHES
1:100

LEGEND

	concrete vinyl tiles - Spac TBC
	Ceramic tile - vitreous enameled non slip - light blue
	Concrete wall paper - custom
	Powder coated perforated steel
	Clear Mason wallpaper - City lights
	Dulux matt - white cloud

NOTE:
ALL ELECTRICAL TO BE
DESIGNED BY APPOINTED
ELECTRICAL CONSULTANT

	No.		Description		Date	PROJECT		CLIENT	
						Fibonacci		Eleanor Holyoake	
						SHEET		CEILING AND FINISHES	
CODE	STATUS	SUITABILITY DESCRIPTION		PURPOSE OF ISSUE		Date	Project number	Scale (@ A3)	REV
						24/11/15	(9)	1:100	
						Drawn by	Drawing Number		
						EH	ID - 104		
						Checked by			
						Checker			