

Interior Design Portfolio

"The details are not the details. They make the design"  
Charles Eames

Raised in Harare, Zimbabwe, I spent countless hours pouring over my father's extensive collection of Homeowner magazines, mesmerized by the diverse interior design styles. This early fascination blossomed into a profound passion to craft spaces that evoke the same sense of wonder and inspiration I experienced.

I firmly believe that interior design has the transformative power to shape experiences, influence behavior, and nurture meaningful connections. My aspiration is to devote myself to creating breathtaking, functional, and thoughtfully designed spaces that uplift and inspire others.



# CONTENTS

**01** | P.G BISON  
NATIONAL COMPETITION

**02** | FIBONACCI  
STUDENT ACCOMMODATION

**03** | MARYLAND  
HOSPICE

**04** | STROLLA  
RESTAURANT

**05** | K.S.A  
RESIDENTIAL

**06** | SAVANNAH CHAIR  
OBJECT

**07** | CORFE RD.  
RESIDENTIAL

**08** | TECHNICALS  
FIBONACCI



# 01 P.G BISON

## BRIEF

We were tasked with designing a destination hotel in South Africa that encourages locals to embrace stay cations. This hotel had to celebrate the region's natural beauty and cultural heritage, featuring a contemporary and progressive design that is internationally competitive. Its core identity was to focus on authenticity rather than decorative elements. Initial design ideas were to be generated by AI and serve as a foundation, then be refined or enhanced to create a unique experience for guests.

## CONCEPT

The traditional Ndebele homestead layout serves as a captivating architectural concept for a hut-style villa resort. By drawing inspiration from the classic kraal structure, the resort's design weaves together a harmonious blend of cultural heritage and modern luxury. The circular arrangement of villas, reminiscent of traditional Ndebele homesteads, fosters a sense of community and connection among guests. As the resort's layout unfolds, it whispers tales of the past while embracing the present, creating an immersive experience that honors the beauty of Ndebele tradition and the essence of African hospitality. The central hub, evoking the communal heart of a traditional kraal, invites guests to gather, share stories, and bask in the warmth of the African sun.

> PLACED TOP 9 -2024 COMPETITION

15XONEIGHT



1. Akashic turning circle- marigold 2. Solid Nature - Granite - Covery Moss (Marble) 3. Cosentino - Trav Rojo Pegamento 4. MashT Studio - Stack Pendant Light 5. P.G Bison- American walnut 6. P.G Bison Tunari 7. P.G Bison- Treviso 8. P.G Bison - Harvard Cherry 9. P.G Bison Brookhill 10. Hetex- Triomphe 11. brass 12. Copper 13. Cortina Leathers - Athene - Tortora 14. Cortina Leathers - Athene - Moss - 50-3 15. Hertex -Alessi 16. Dedar - Marabou - 033 17. Hertex- Clay 18. Marazzi - Lume Musk



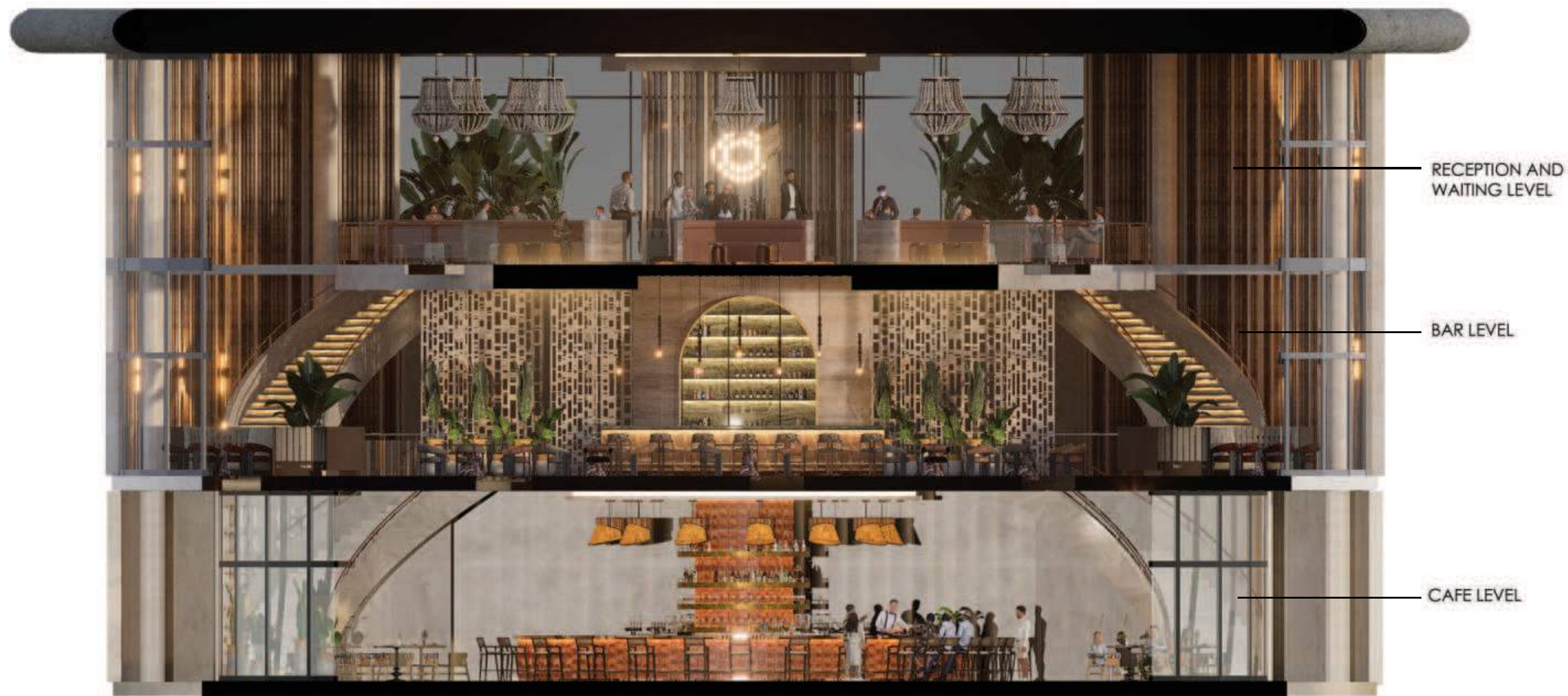






MASTER PLAN





MAIN BUILDING SECTION



RECEPTION AREA





WAITING AREA



WAITING AREA

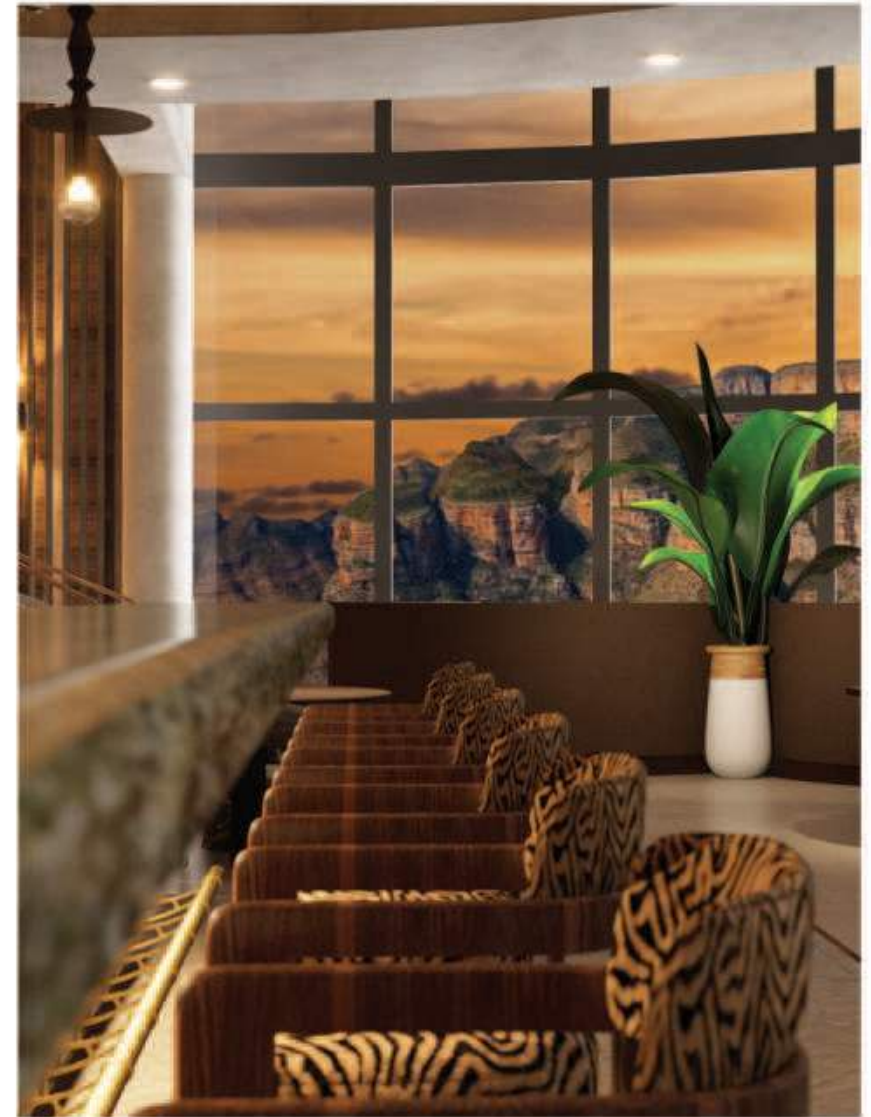




BAR DETAIL



BAR DETAIL



BAR DETAIL









CAFE









CAFE DECK POOL



CAFE DECK









MULTI-USE PATHWAY



OUTDOOR AMPHITHEATER AND YOGA DECK



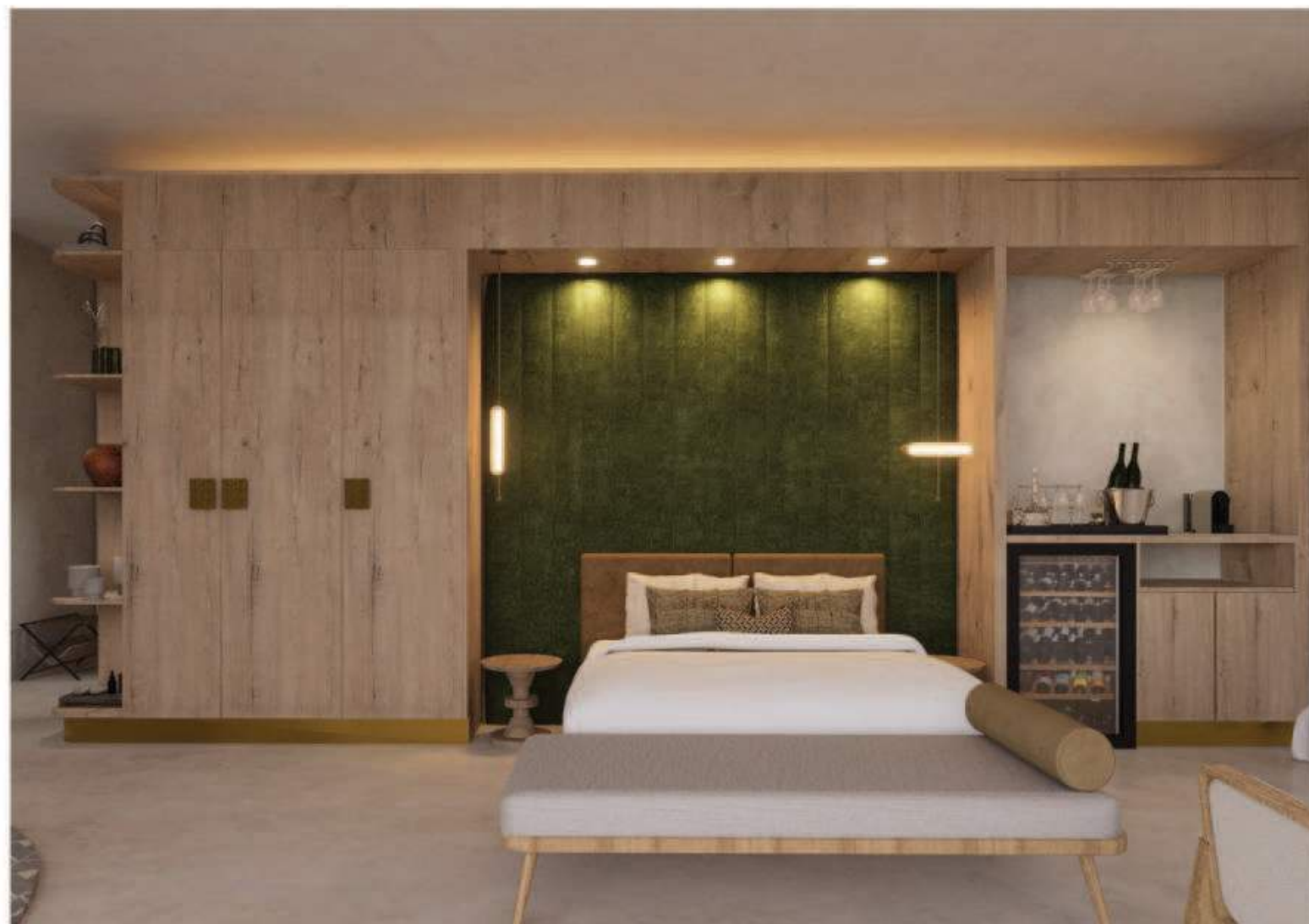


32m<sup>2</sup> VILLA BEDROOM



32m<sup>2</sup> VILLA BATHROOM

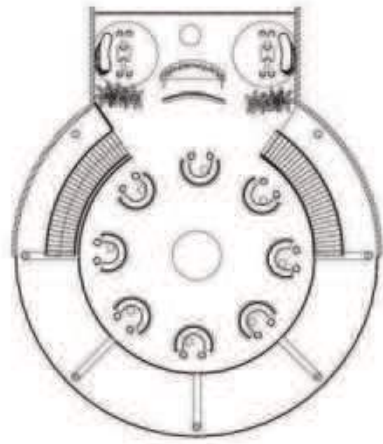




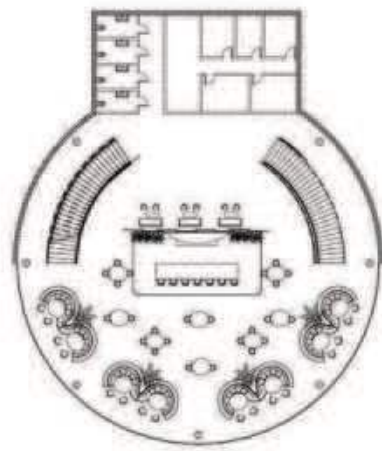
64m<sup>2</sup> VILLA BATHROOM



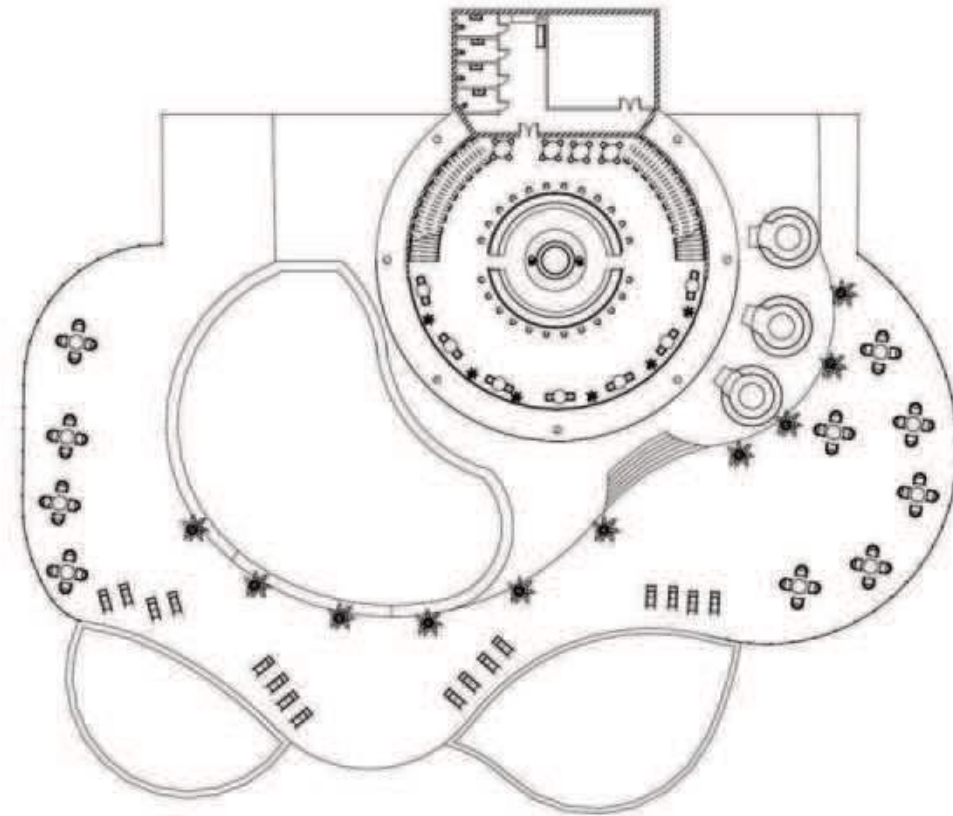
64m<sup>2</sup> VILLA BATHROOM



ENTRANCE LEVEL FLOOR PLAN | NTS

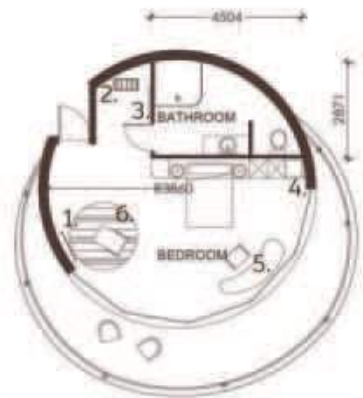


BAR LEVEL FLOOR PLAN | NTS



CAFE AND DECK LEVEL FLOOR PLAN | NTS

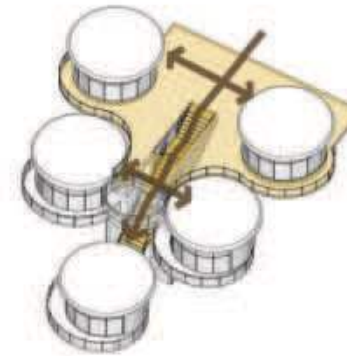




32m2 BEDROOM PLAN | NTS



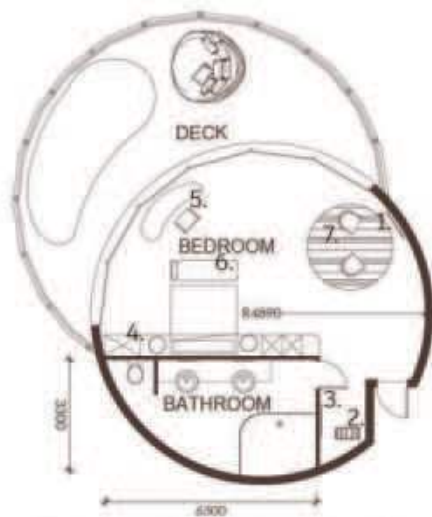
32m2 BEDROOM AXO



32m2 CIRCULATION



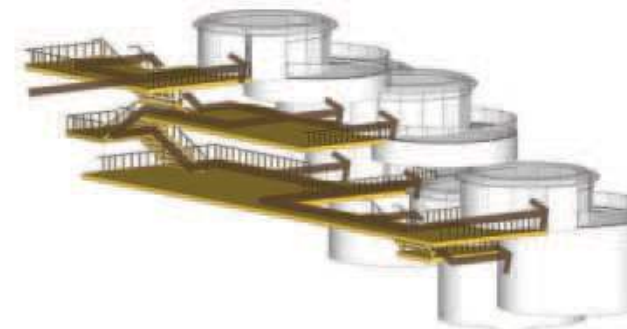
32m2 BEDROOM CLUSTER



64m2 BEDROOM PLAN | NTS



64m2 BEDROOM AXO



64m2 BEDROOM CIRCULATION



64m2 BEDROOM CLUSTER

KEY 1. TV 2. LUGGAGE RACK 3. FULL HEIGHT MIRROR 4. REFRESHMENTS STATION 5. DESK 6. SOFA BED 7. OCCASIONAL SEATING

 **SIPHELELE**

Furniture pieces used throughout the resort in support of South African designers, artists and manufacturers



11. Akashic turning circle 2. MashT studio stack light pendat 3 Okha Mirror -solar 4. MashT studio -jozi Skyline 5. John Vogel- upright mantis lounge chair 6. Studio19 silo bronze table lamp 7. MashT studio- top brass pendant 8. Studio19- Totem solid pendant 9. Studio19 - The totem pendant 10.Okha- Toro A frame chair 11. Okha- Ziggy bench 12. Zizipho poswa-Mam'uNoZinzile, 2023 Bronze 13. Anatomy- Chunky side table 14. Indigenus -Tuber planter

FURNITURE SELECTION





>PG BISON 1.618 COMPETITION BOARD NATIONAL PLACED TOP 9

## 02 FIBONACCI

### BRIEF

We were tasked to create an Interior Design proposal for the upcoming student accommodation Fibonacci development in the Southern Suburbs of Cape Town. We had to focus on creating value for the end-user of the space, we also had the flexibility to suggest new, but relevant ideas for some of the social spaces. Materiality and price point were extremely important and we had to consider durability, functionality and ergonomic layout design.

### CONCEPT

Inspired by the vibrant energy of Cape Town, this student accommodation embodies a unique blend of industrial chic and playful sophistication. The muted primary color palette, paired with textured elements of concrete, metal, and leather, creates a dynamic atmosphere. Each zone is thoughtfully designated by a distinct hue, fostering a sense of community and functionality.

The **Muted Red** Play Zone ignites creativity and social interaction, while the **Muted Blue** Work Zone promotes focus and productivity. The calming **Muted Green** Relax Zone offers a serene escape, and the **vibrant Yellow** Eat and Chill Zone encourages communal gatherings and connection.

This intentional color coding system streamlines navigation, ensuring students effortlessly transition between study, leisure, and social activities. The industrial aesthetic, tempered by warm textures and natural light, cultivates a sense of urban authenticity. By merging functionality with playful expression, this interior design concept creates an inspiring and inclusive environment for students to thrive in the heart of Cape Town.

- > BEST ENTRANCE FOYER AND LOBBY DESIGN
- > BEST SOCIAL SPACES DESIGN AWARD

FIBONACCI  
CAPE TOWN







TODAYS MENU





ENTRANCE FLOOR PLAN | NTS



GYM FLOOR PLAN | NTS



QUIET ZONE FLOOR PLAN | NTS



QUIET ZONE FLOOR PLAN | NTS



DOUBLE VOLUME CAFETERIA FLOOR PLAN | NTS



DOUBLE VOLUME LOUNGE FLOOR PLAN | NTS



ENTRANCE AND RECEPTION







ENTRANCE AND RECEPTION



GYM LIFT LOBBY



GYM WEIGHTS RACK AND BENCHES





POWER  
LIFT

ROGUE

ROGUE





STUDY CENTRE LIFT LOBBY



STUDY CENTRE



QUIET ZONE SEATING



QUIET ZONE KITCHENETTE AND SEATING







CAFETERIA LIFT LOBBY



CAFETERIA SEATING





CAFETERIA







CAFETERIA KIOSK





COME HUNGRY  
LEAVE happy!





CAFETERIA STAIRCASE TO SECOND FLOOR LOUNGE



CAFETERIA LOUNGE







CAFETERIA LOUNGE



CAFETERIA OUTDOOR AREA









STUDIO APARTMENT FLOOR PLAN | NTS



STUDIO APARTMENT AXONOMETRIC | NTS





STUDIO APARTMENT OPTION 1



STUDIO APARTMENT OPTION 2





STUDIO APARTMENT OPTION 1



STUDIO APARTMENT OPTION 2





STUDIO APARTMENT OPTION 1



STUDIO APARTMENT OPTION 2





STUDIO APARTMENT OPTION 1



STUDIO APARTMENT OPTION 2





TYPICAL BATHROOM OPTION 1



TYPICAL BATHROOM OPTION 2





1. HERTEX - RELIC SAVANNAH 2. HERTEX - RELIC GRASSLAND 3. STILES TILE SEAFOAM TILE 4. STILES TILE MOSS GREEN 5. EBAC VINYL FLOORING WARM OAK 6. P.G. BSOH- CUPPUCHO 7. P.G. BSOH-SUPER BLACK 8. P.G. BSOH-CARAI 9. HERTEX THOR-CLAY 10. HERTEX - CITY-SCAPE GLACIER 11. HERTEX PRESERVATION-FRED EARTH 12. HERTEX HAUS-ANHAL ATTRACON-SEAFOAM 13. DULUX PAINT CLAY 14. P.G. BSOH WORKTOP BROOKLYN LOFT 15. TRESTORA -FRAZZO TILE EDGE 16. EBAC VINYL FLOORING- DARK OAK  
17. P.G. BSOH- TUNAB 18. BOLOGNERE TRAZZ VINYL TILE VASCANO 19. DULUX PAINT -ROMATO 20. BOLOGNERE SPORIC RUBBER FLOORING - GREY 21. BOLOGNERE CLOUT VINYL BUCHING 22. P.G. BSOH- CANU BLUE 23. DULUX PAINT - EASNE BLUE 24. DULUX PAINT- SKY BLUE 25. P.G. BSOH WORKTOP BROOKLYN 26. TILES TILE - YELLOW 27. FAT TILE ST. BLACK METAL 28. DULUX PAINT -BRIGHT YELLOW 29. DULUX PAINT-MUSTARD YELLOW 30. BOLOGNERE RIPPLE CLOUD 31. BOLOGNERE RIPPLE CARPET TILE -DUSK 32. DULUX PAINT- PEACH 33. HERTEX -CITY-SCAPE ALUMINUM 34. BOLOGNERE TRAZZ JARDEGAN

MATERIALS BOARD



## 03 MARYLAND HOSPICE

### BRIEF

We were tasked with designing a hospice facility that ensures a dignified send-off for patients in their final months. The design must consider the needs of patients, their families and friends, as well as nursing and support staff.

### CONCEPT

I designed this hospice to provide a warm and comfortable environment for all users. Inspired by natural textures and shapes, the space feels grounded and familiar, reflecting our connection to nature as our true home. The slatted columns, a motif for a tree, symbolize qualities like groundedness, connection, and strength, fostering a sense of peace for patients, visitors, and staff as they navigate their individual journeys.

>BEST FRONT OF HOUSE DESIGN AWARD

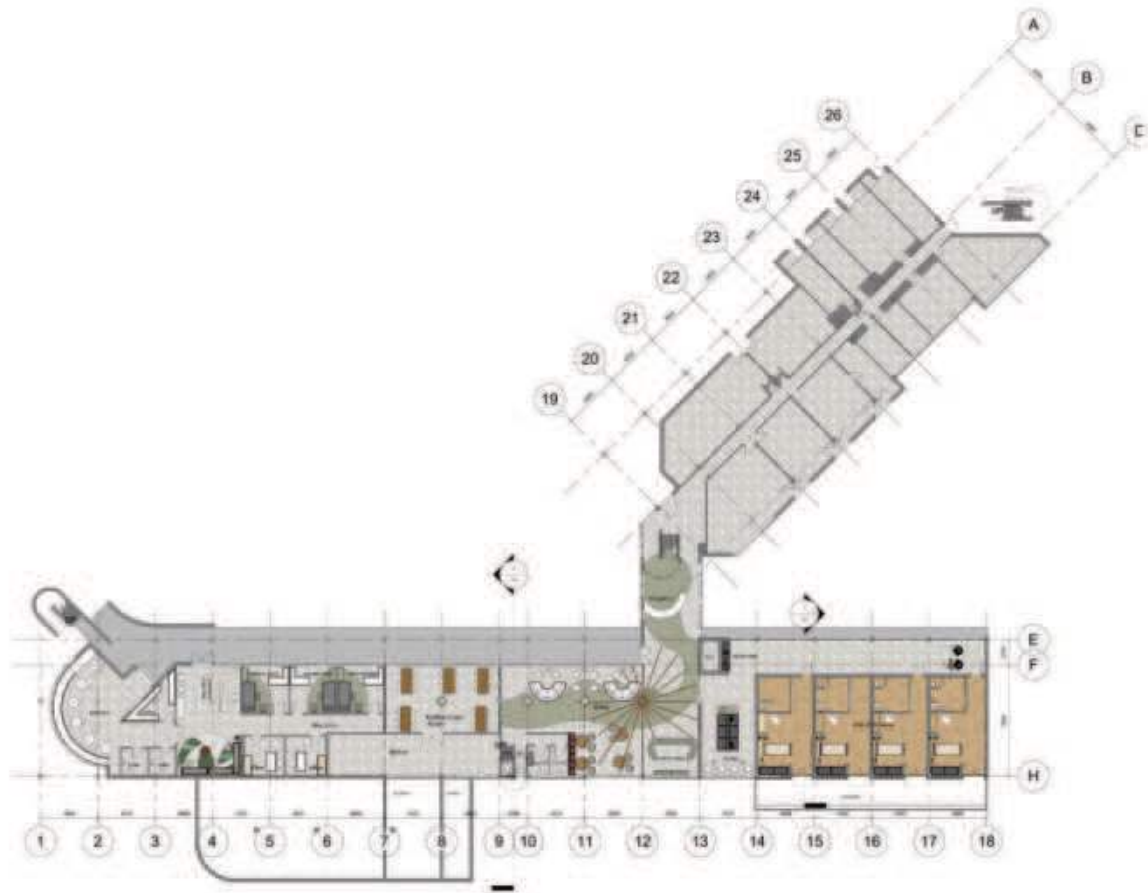




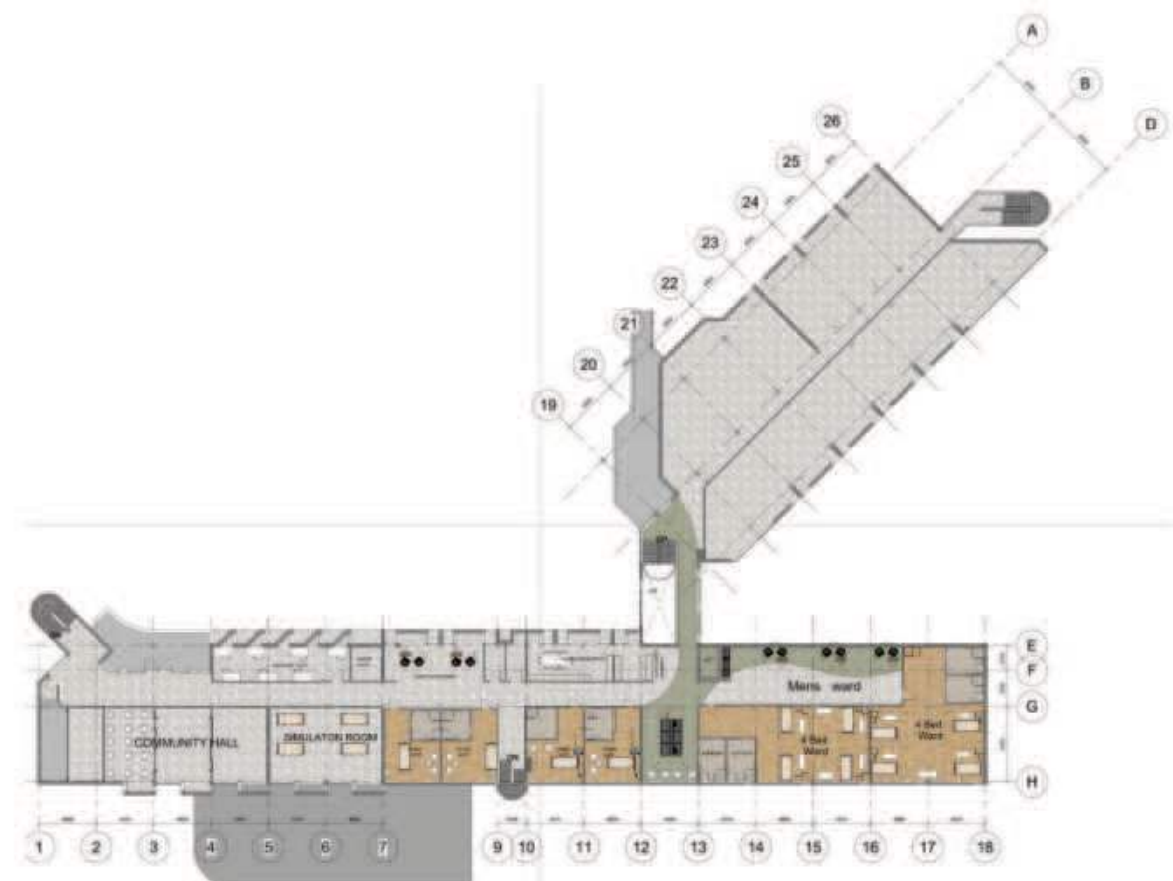






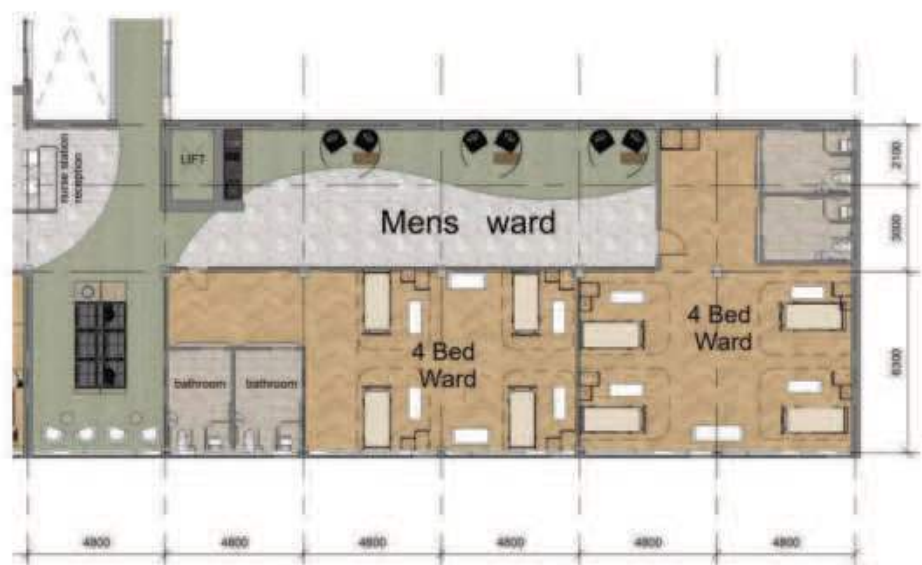


GROUND FLOOR PLAN | NTS



SECOND FLOOR PLAN | NTS

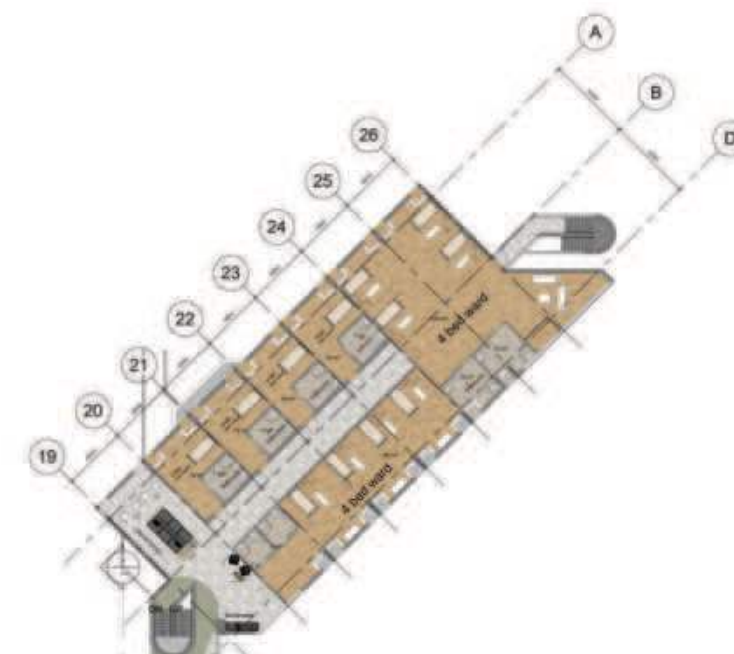




MENS WARD PLAN | NTS



END OF LIFE WARD PLAN | NTS



WOMANS WARD PLAN | NTS





RECEPTION



RECEPTION DESK





WAITING LOUNGE AND KIOSK



WAITING LOUNGE SEATING





DINING HALL



DINING HALL





WAITING LOUNGE SEATING





QUIET POD



PAUSE LOUNGE AND KITCHENETTE









END OF LIFE WARD



END OF LIFE WARD





SINGLE BEDROOM WARD

## 04 STROLLA RESTAURANT

### BRIEF

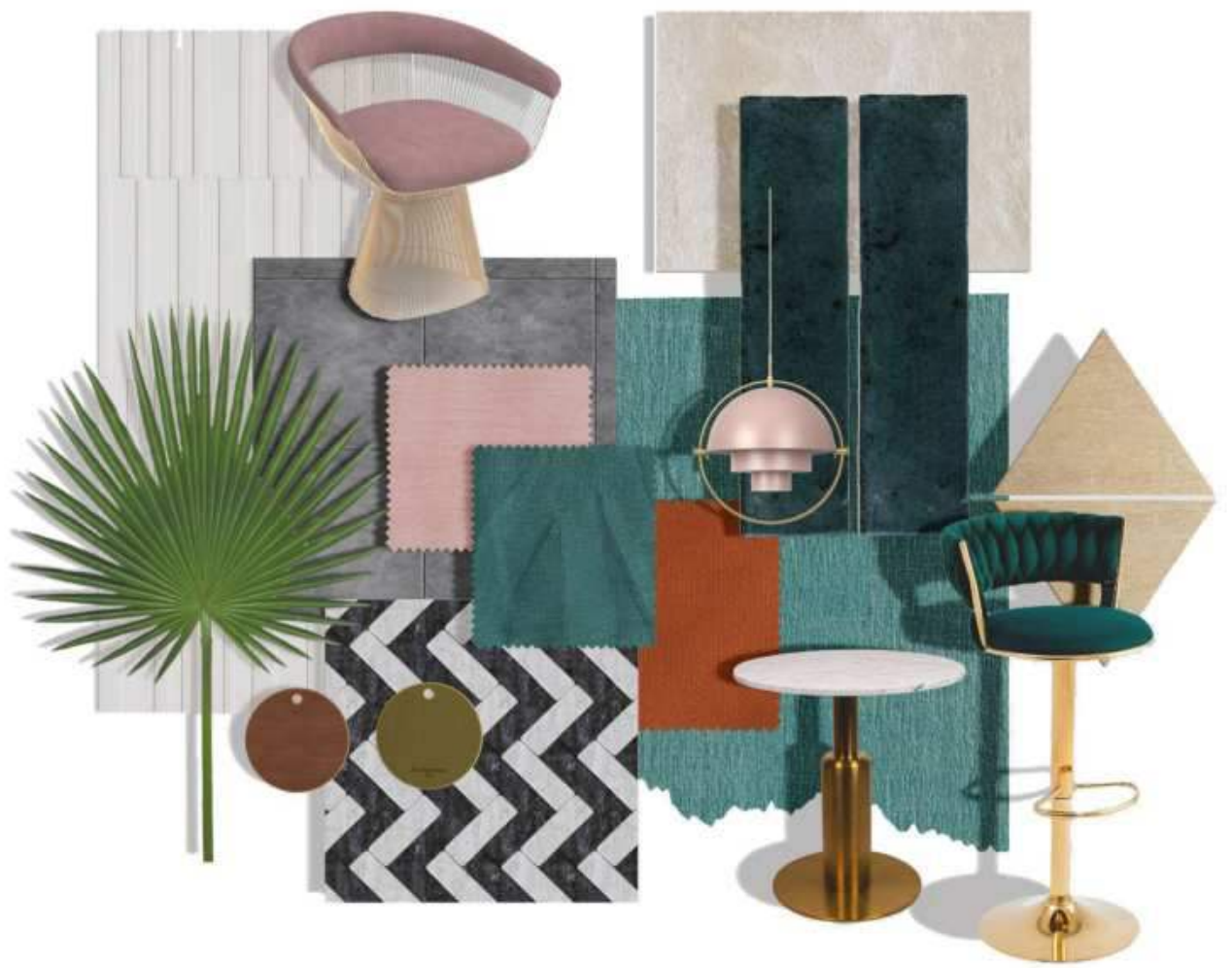
We were tasked with designing a commercially viable coffee bar that changes over into a sparkling wine bar in the afternoon.

### CONCEPT

The concept draws inspiration from the existing restaurant, preserving its essence and Art Deco details. Influenced by ornate elements, the design incorporates abstract patterns, brass accents, and velvet upholstery to create a transitional space that evolves from a relaxed daytime atmosphere to a sophisticated evening setting. Various lighting types enhance the ambiance, providing a layered experience. Space optimization is a key focus, achieved through diverse seating options that cater to all patrons, from those enjoying a quick coffee to those indulging in a sit-down meal.







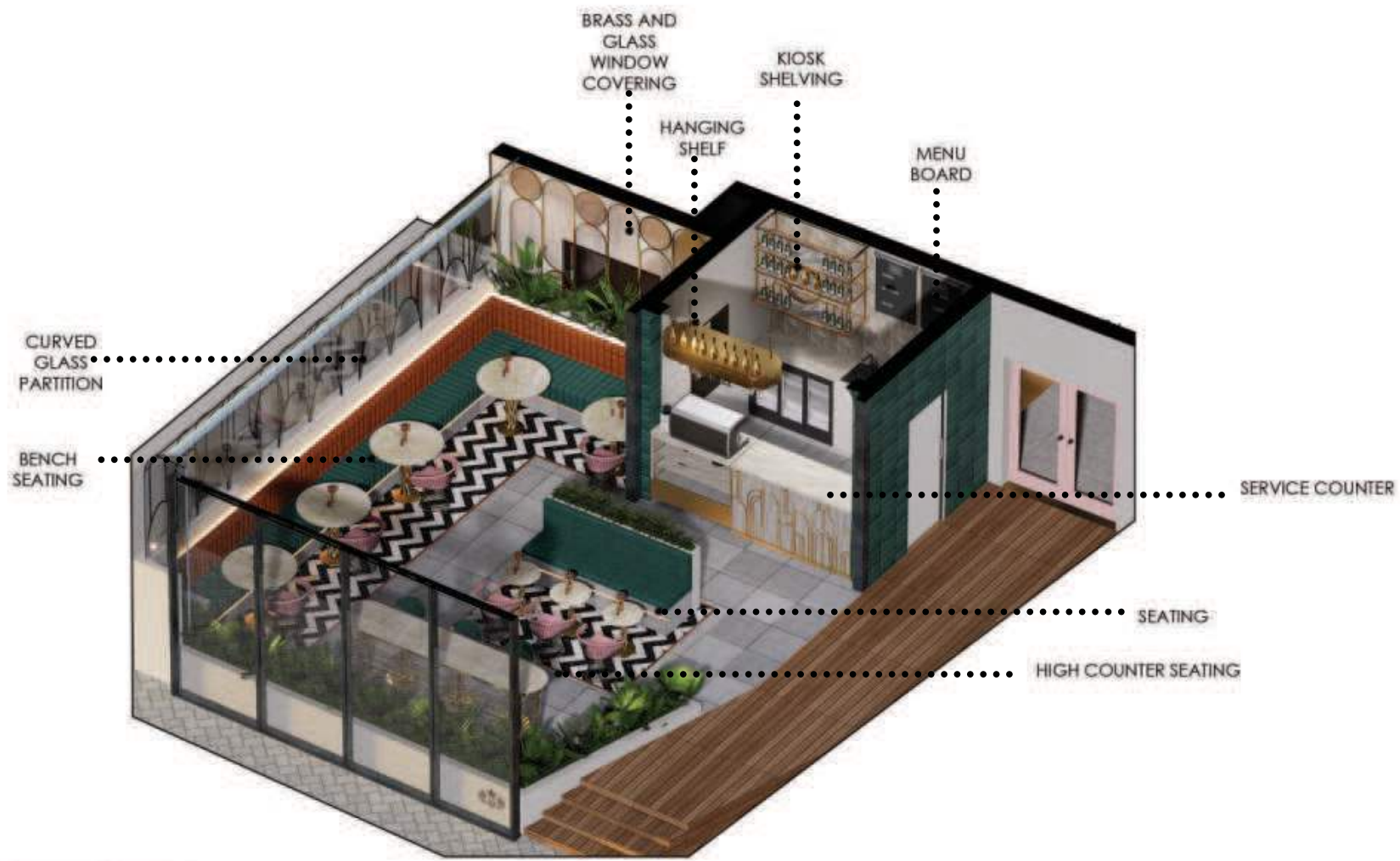


STROLLA

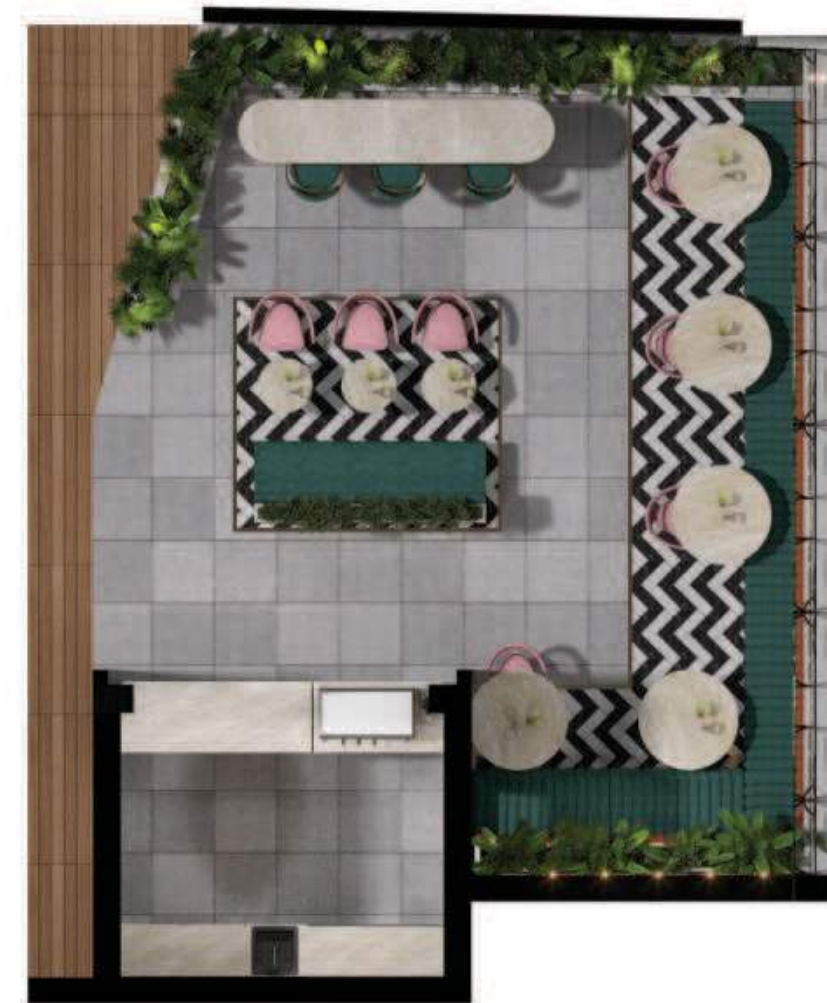


STREET VIEW





AXONOMETRIC DIAGRAM



FLOOR PLAN | NTS









BANQUETTE SEATING



RESTAURANT SEATING





SERVICE COUNTER

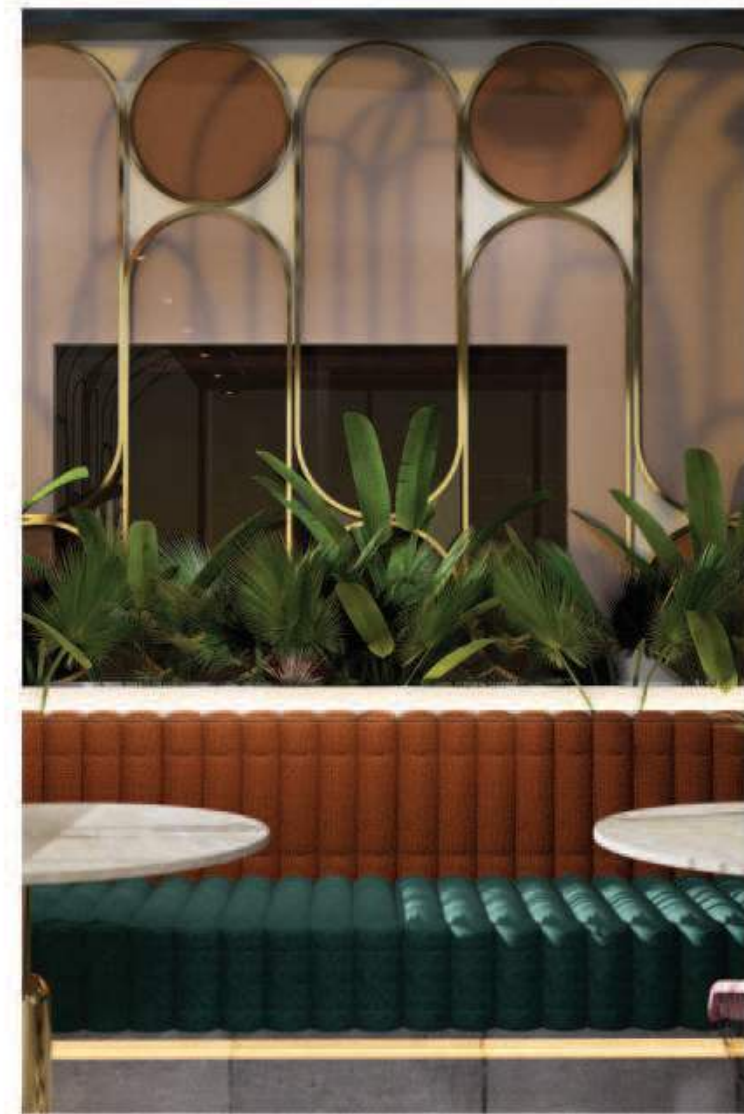




SHELVING DETAIL



SERVICE COUNTER DETAIL



SERVICE COUNTER DETAIL





SEATING DETAIL



SEATING DETAIL



SEATING DETAIL



## 05 KITCHEN SPECIALIST ASSOCIATION

### BRIEF

The clients are seeking a luxurious, high-end kitchen that expertly balances elegance and functionality within a compact footprint. As they downsize, efficient storage and accessibility are paramount. The client expressed a clear vision for a serene and natural aesthetic, emphasizing the importance of premium materials throughout. To achieve this, they specified that only high-end surfaces, hardware, and accessories be used.

### CONCEPT

For this kitchen design, I aimed to create a harmonious space that embodies the client's desire for a natural aesthetic. Inspired by the fusion of Scandinavian and Japanese design philosophies, I opted for a Japandi Contemporary kitchen that seamlessly blends minimalism with warm, organic elements. Characterized by its clean lines, simplicity, and emphasis on natural materials, Japandi style perfectly captures the essence of a serene and inviting environment. By incorporating wood accents, subtle textures, and thoughtful lighting design – including sleek LED strip lighting – I infused the space with a contemporary edge, striking a balance between warmth and sophistication.



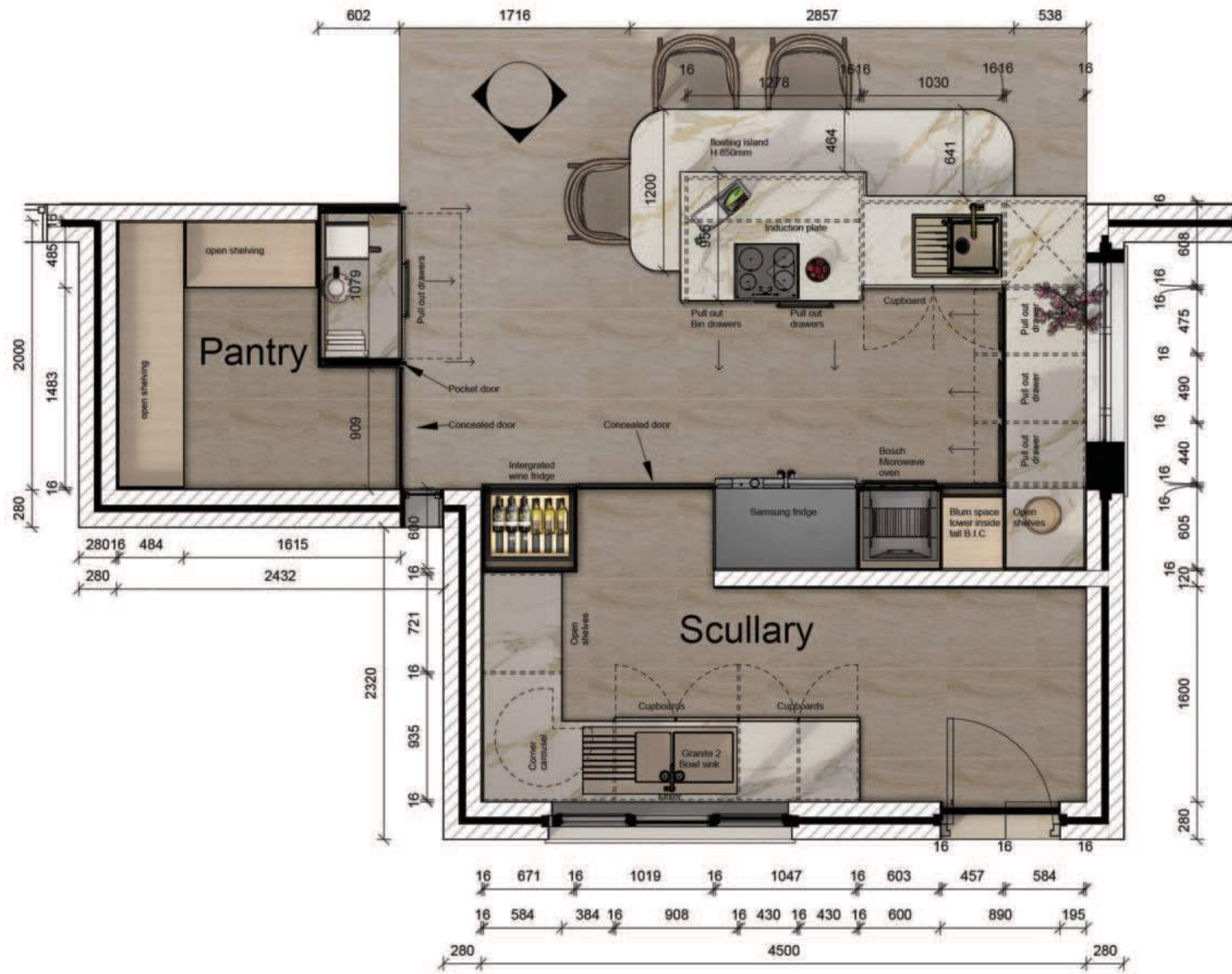




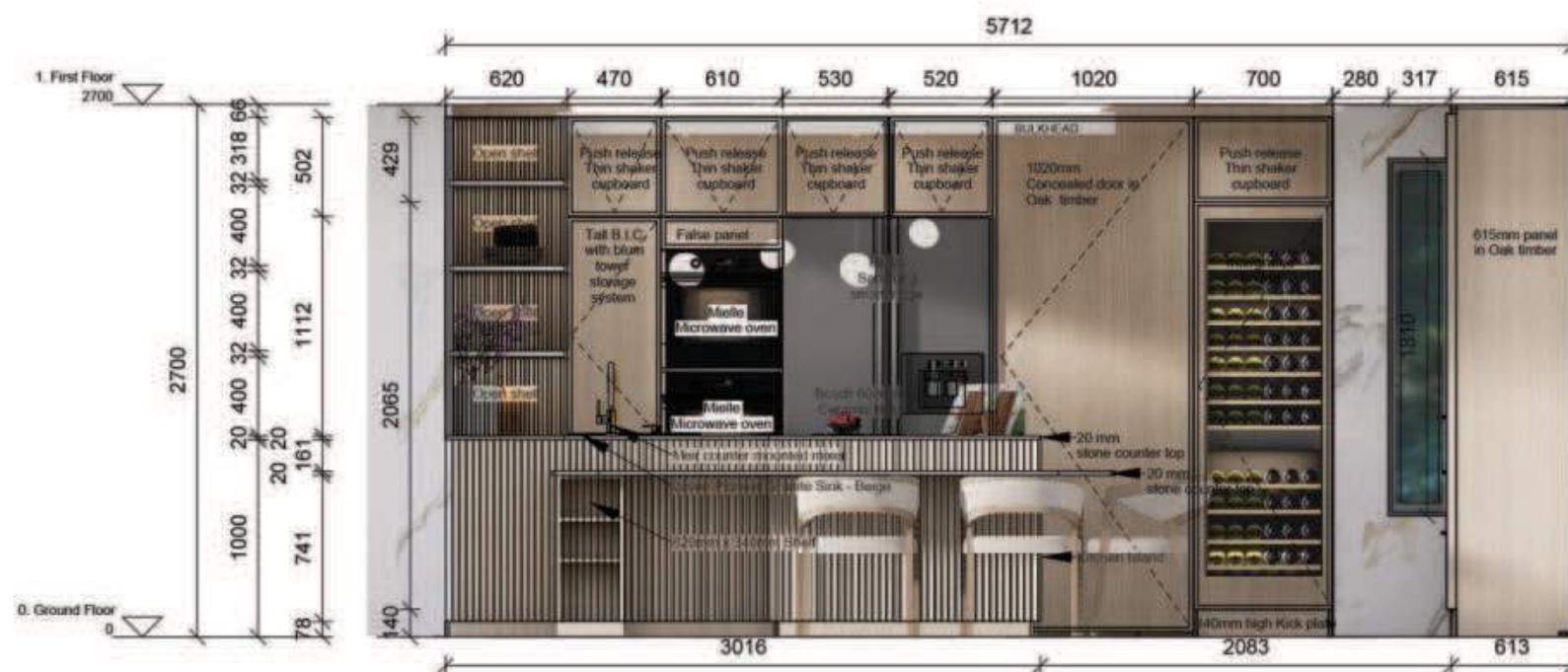
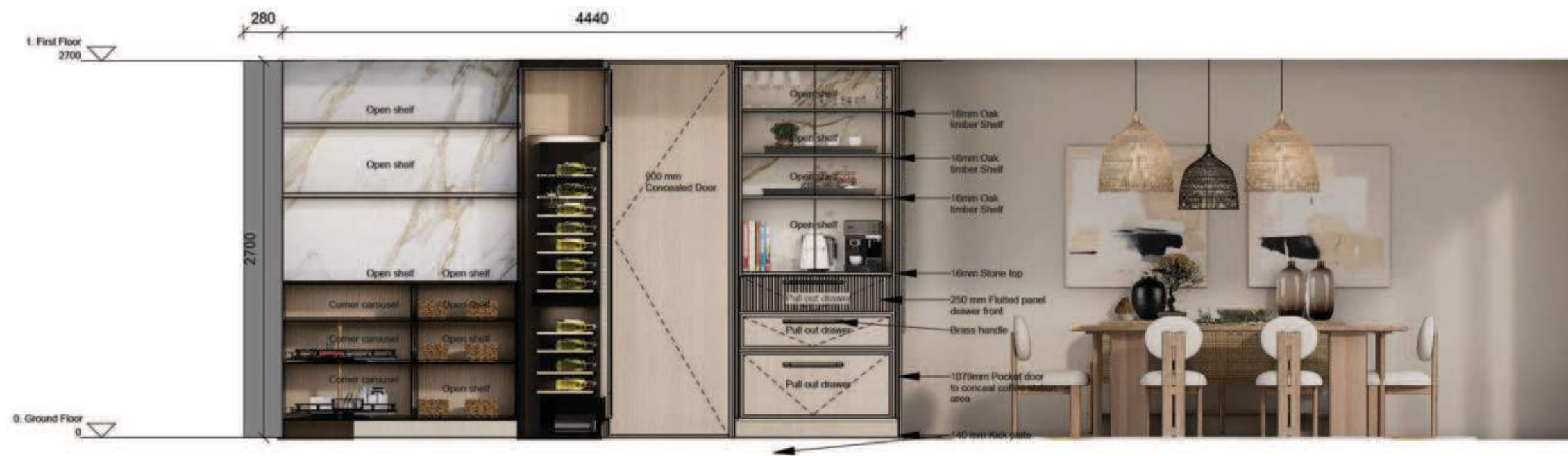




















INTEGRATED WINE FRIDGE



SCULLERY

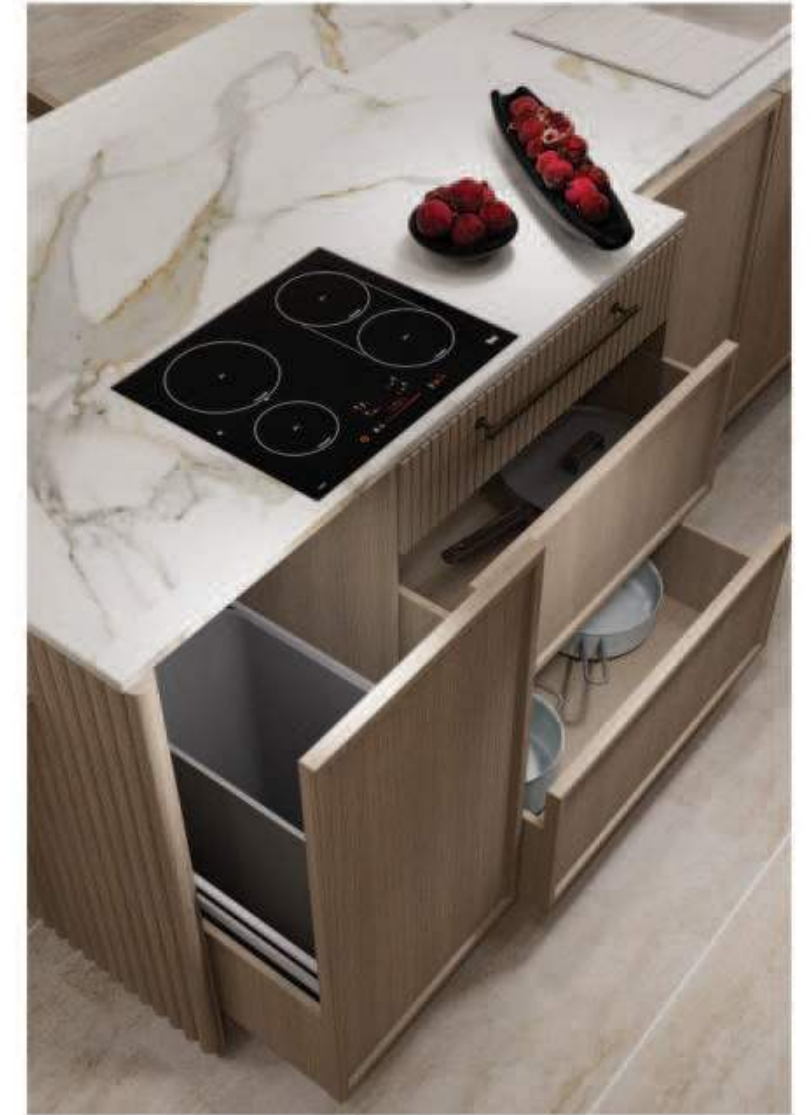




DRAWERS AND CABINETS DETAIL



OPEN SHELF DETAIL



ISLAND DRAWERS DETAIL





KITCHEN PERSPECTIVE





KITCHEN PERSPECTIVE



## 06 OBJECT

### BRIEF

We were tasked with designing a commercially viable chair. Construction drawings were required to successfully communicate our design to the manufacturer

### CONCEPT

Elevate your space with the Savannah Chair, a masterful blend of simplicity, sophistication, and sustainability. Handcrafted from responsibly sourced timber, this elegant piece boasts precise angles and clean lines, evoking the serenity of the African savannah.





**SAVANNAH**  
CHAIR



**MADE BEAUTIFULLY,**  
for life





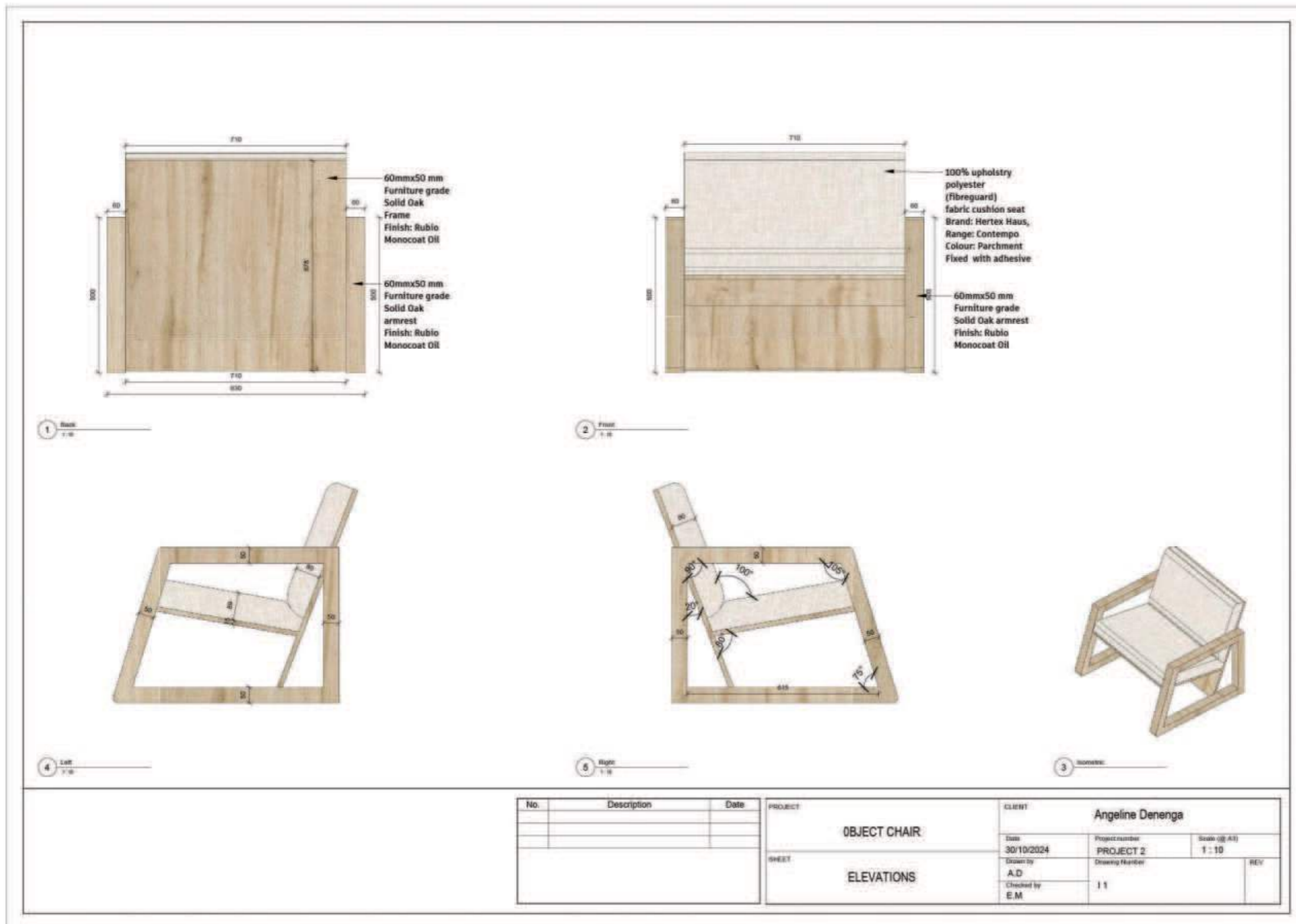
CHAIR DETAIL



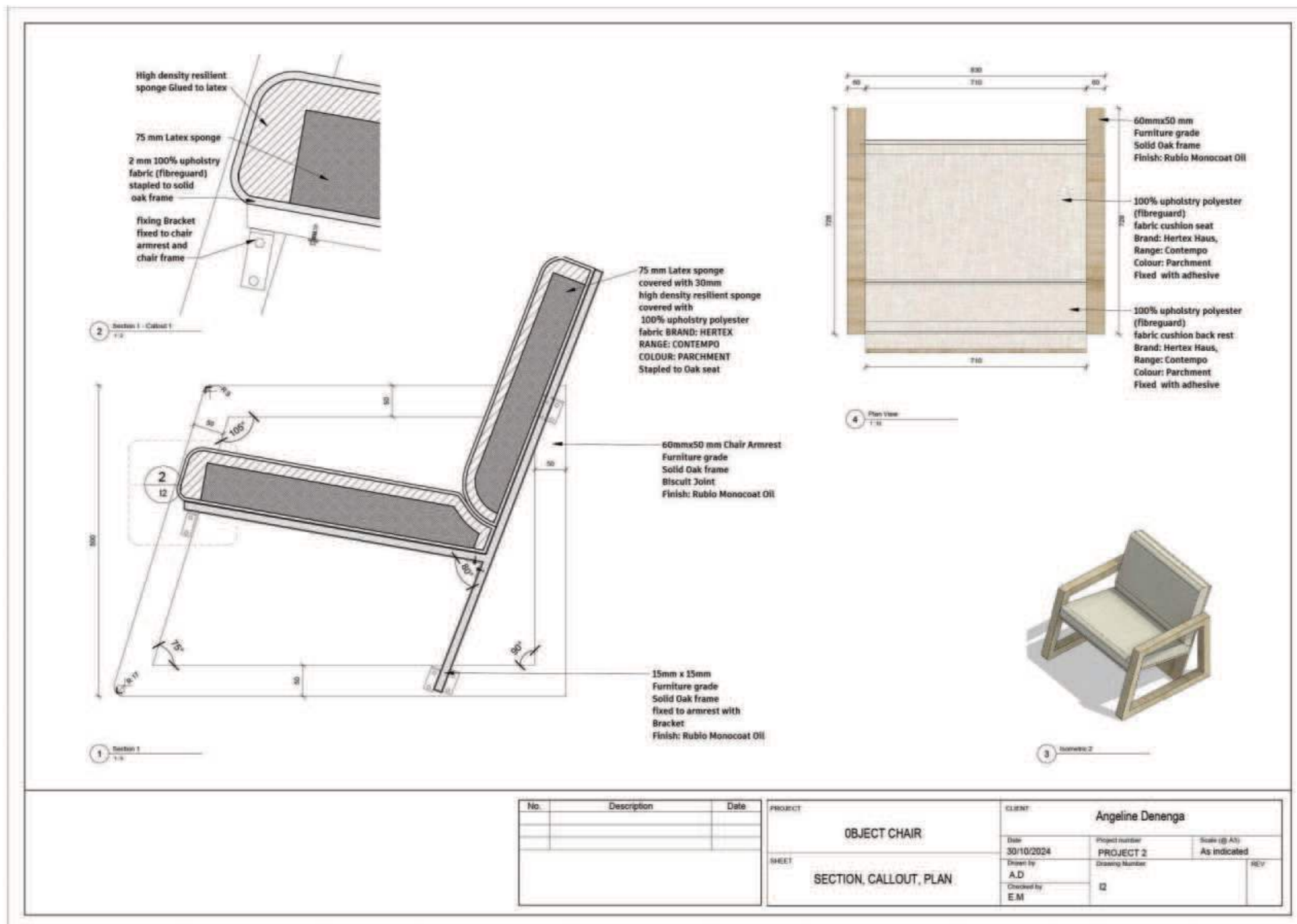
CHAIR DETAIL







No.	Description	Date	PROJECT		
			OBJECT CHAIR		
			CLIENT: Angeline Denenga		
			Date: 30/10/2024	Project number: PROJECT 2	Scale: (A1) 1:10
			Drawn by: A.D	Drawing Number: 11	REV
			Checked by: E.M		
			SHEET: ELEVATIONS		



No.	Description	Date	PROJECT	CLIENT
			OBJECT CHAIR	Angeline Denenga
			SHEET	PROJECT 2
			SECTION, CALLOUT, PLAN	As indicated
				12
				REV
				EM



## 07 CORFE RD.

### BRIEF

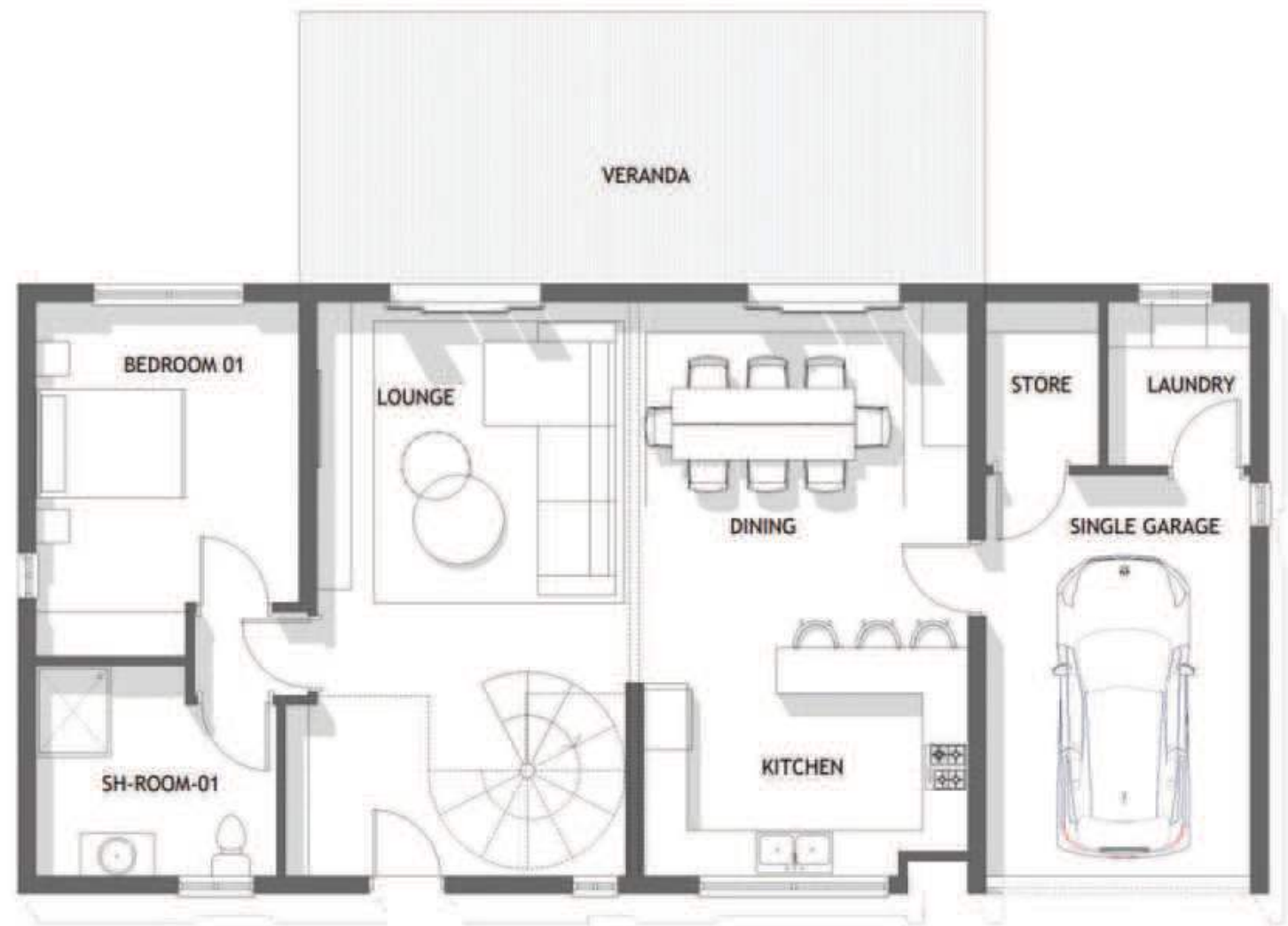
I was commissioned to create stunning 3D visuals for a luxurious cluster home development in Highlands, Harare. My objective was to showcase the exterior and interior spaces, highlighting the development's premium features and serene surroundings. The 3D renders had to capture the essence of this exclusive residential community, emphasizing its tranquil atmosphere and high-end amenities. The visuals were specifically designed for social media marketing purposes, aiming to entice potential buyers and showcase the development's unique lifestyle offering

### CONCEPT

Corfe Rd. combines natural warmth with modern sophistication, featuring wood cladding, a soothing neutral color palette, and sleek LED lighting. This harmonious blend creates a tranquil retreat, perfect for relaxation and everyday living, where indoor and outdoor spaces seamlessly intersect







GROUND FLOOR PLAN | NTS



FIRST FLOOR PLAN | NTS



MASTER PLAN | NTS





DINING ROOM WITH BAR UNIT



KITCHEN



LOUNGE TV WALL UNIT





OPEN PLAN LIVING ROOM, DINING AND KITCHEN



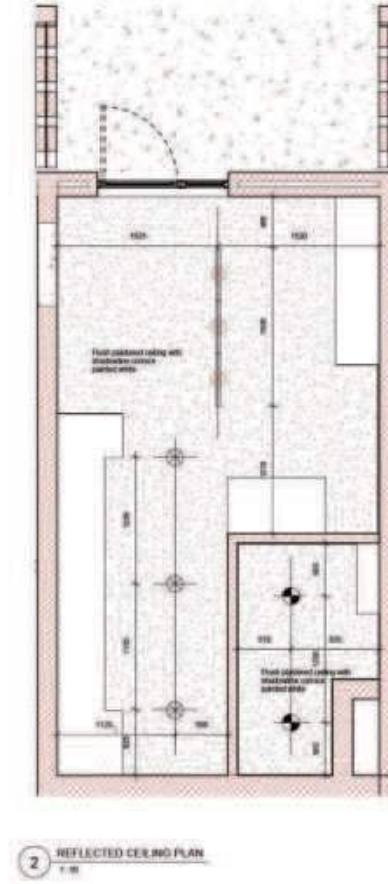
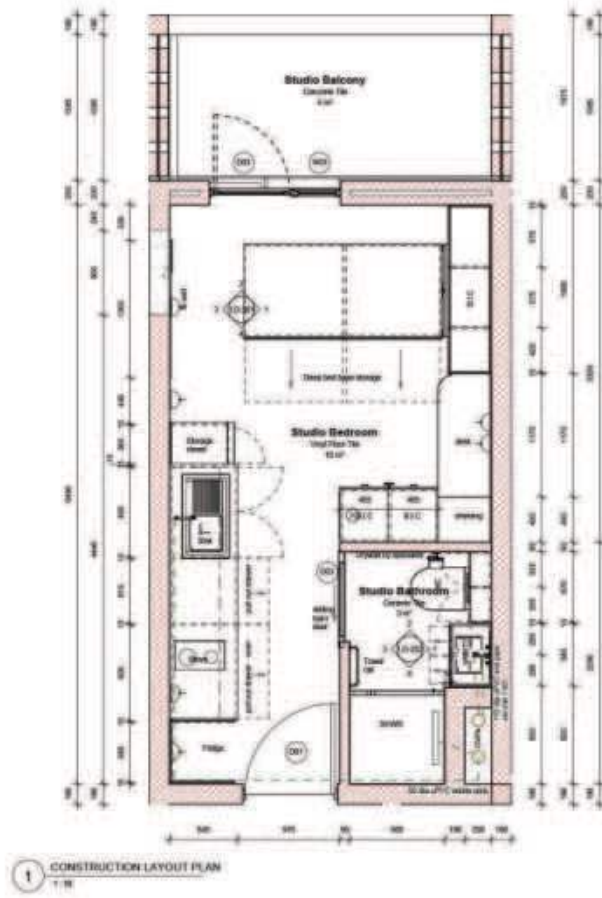
MASTER BEDROOM



MASTER BEDROOM WALK IN CLOSET



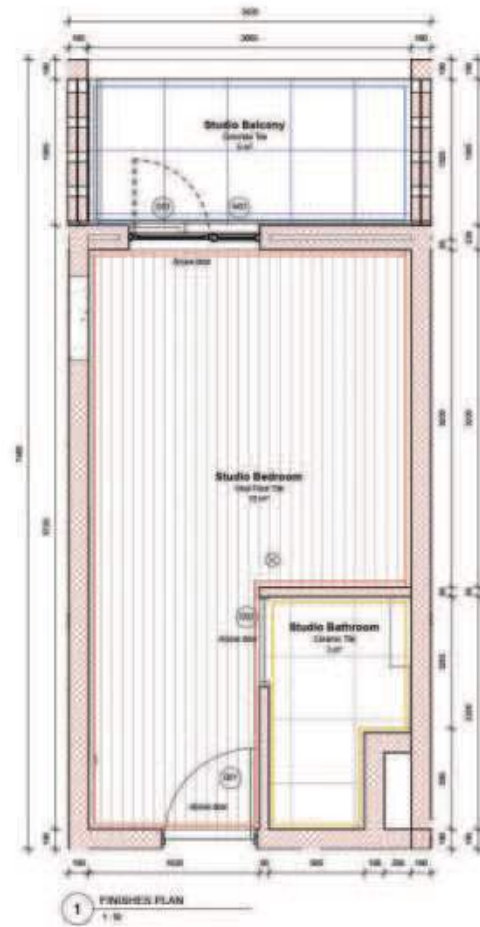
## 08 TECHNICALS



ELECTRICAL WORK SHOWN  
DRAWING IS THE PROPERTY  
OF FIBONACCI ONLY

No.	Description	Date	PROJECT		CLIENT	
			Fibonacci		Angeline Denenga	
			SHEET		Date	Project number
			CONSTRUCTION PLAN, REFLECTED CEILING PLAN		2024/11/15	PO9
					Drawn by	Scale (if A3)
					A.D	1:50
					Checked by	Drawing Number
					E.M	ID-101
						REV

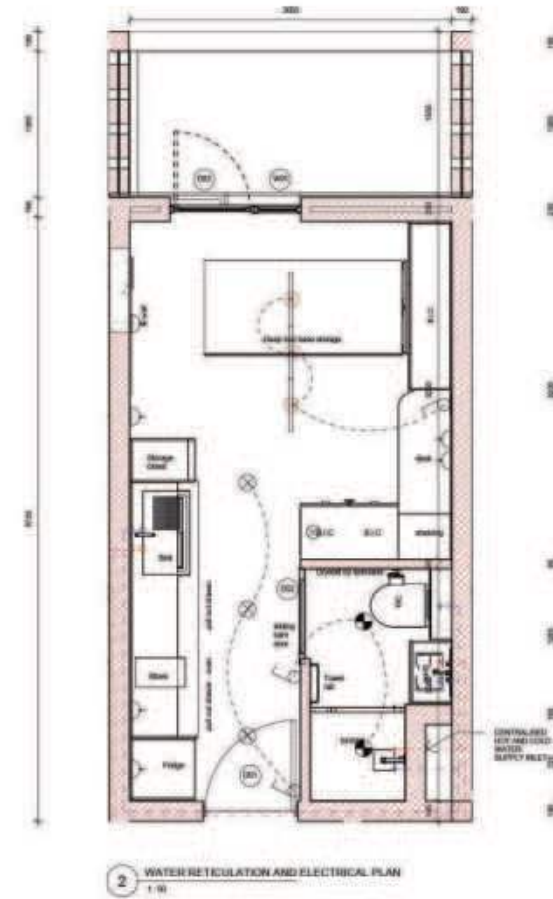




1 FINISHES PLAN  
1:50

Plaster with color coat, finish  
and painted in color as per design  
Tinted plaster + 0.5mm mesh for  
control crack  
Color: White  
External: Blue

Plaster with color coat, finish and painted in color as per design	Color: White
Tinted plaster + 0.5mm mesh for control crack	Color: White
Color: White	Color: White
Color: White	Color: White
Tinted plaster + 0.5mm mesh for control crack	Color: White
Color: White	Color: White
Color: White	Color: White
Color: White	Color: White

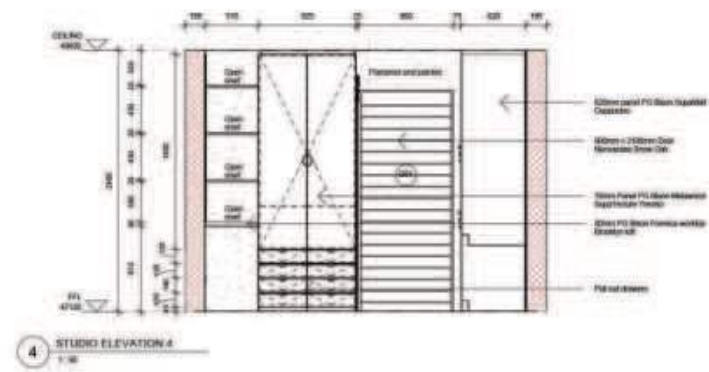
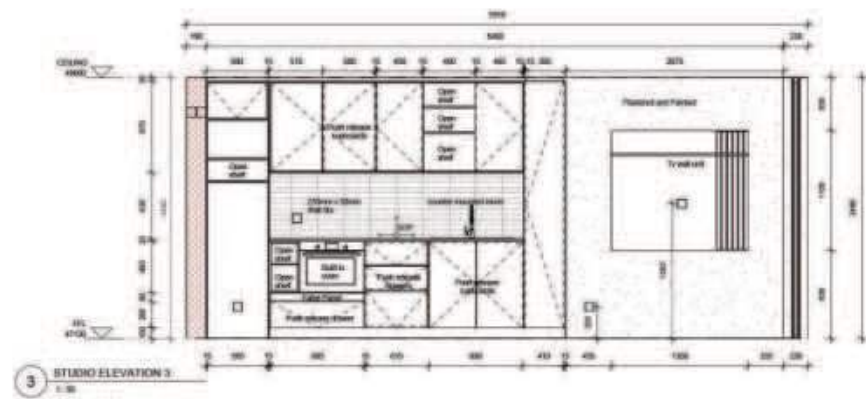
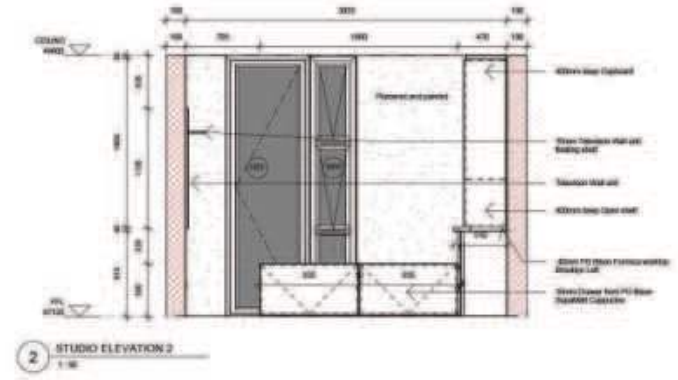
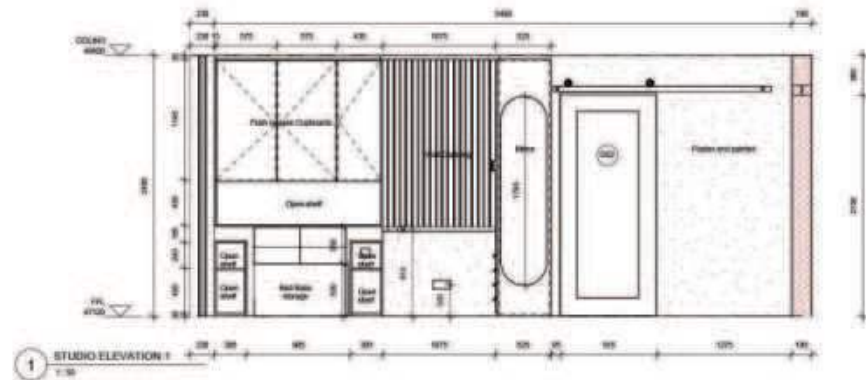


2 WATER RETICULATION AND ELECTRICAL PLAN  
1:50

	Double socket power outlet 15A/20A, 1P+N, unless otherwise specified		LED motion sensor spotlight
	Single socket power outlet 15A/20A, 1P+N, unless otherwise specified		LED recessed spotlight
	Single line water inlet 1/2" DN or 1", unless otherwise specified		Cold water water closet
	LED spotlight track		Hot water water closet

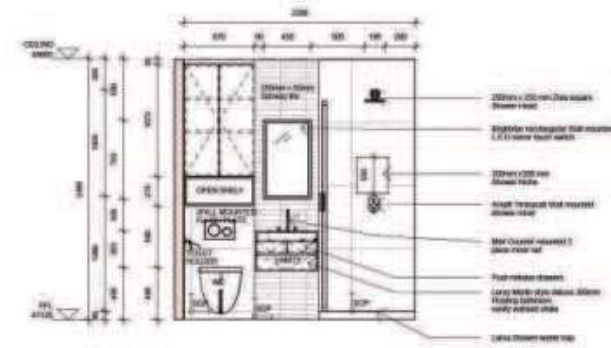
ELECTRICAL, WATER AND  
MECHANICAL TO THE DRAWING  
IS SCHEMATIC ONLY

	No.	Description	Date	PROJECT		CLIENT		
				Fibonacci		Angeline Denenga		
				SHEET		Date	Project number	Scale (2D A3)
CODE	STATUS	SUITABILITY DESCRIPTION	PURPOSE OF ISSUE	FINISHES PLAN, WATER RETICULATION AND ELECTRICAL PLAN		2024/11/15	Pgg	1:50
					Drawn by	Drawing Number	REV.	
					A.D	LD-102		
					Checked by			
					E.M			

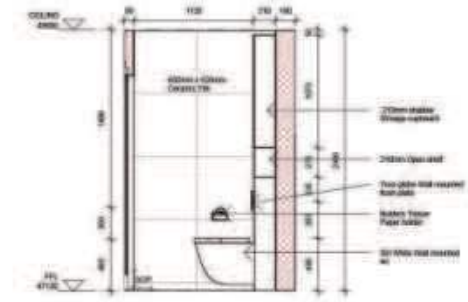


No.	Description	Date	PROJECT		CLIENT		
			Fibonacci		Angeline Denenga		
			SHEET		Date	Project number	Scale (if A3)
			Studio Apartment Elevations		2024/11/15	P09	1:50
					Drawn by	Drawing Number	REV
					A.D	I.D-201	
					Checked by		
					E.M		

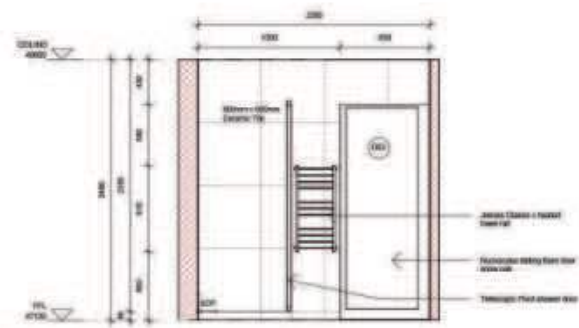




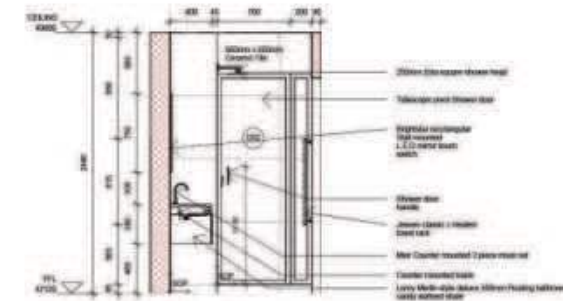
1 BATHROOM ELEVATION 1  
1:50



2 BATHROOM ELEVATION 2  
1:50

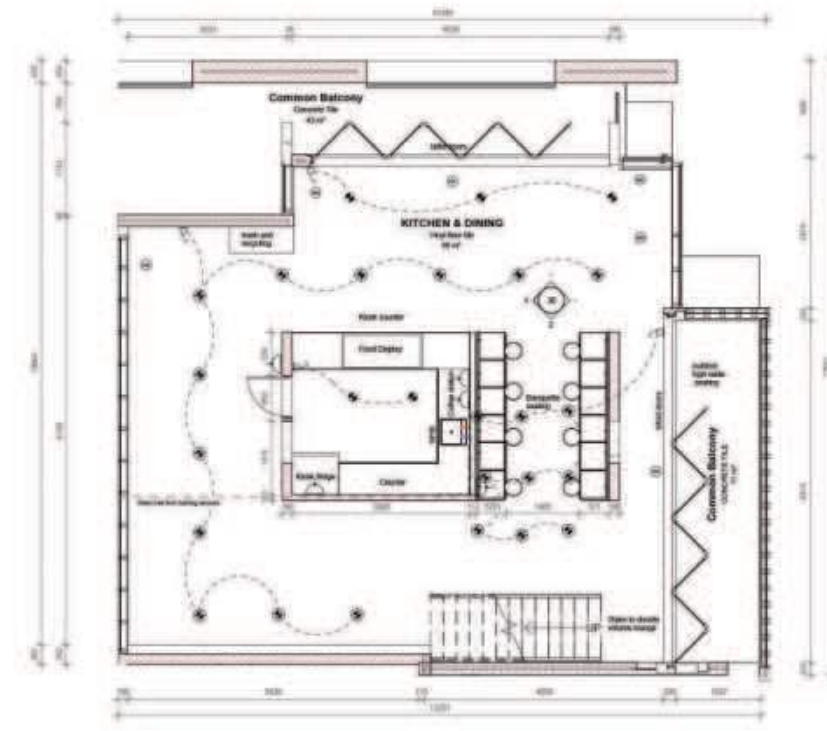
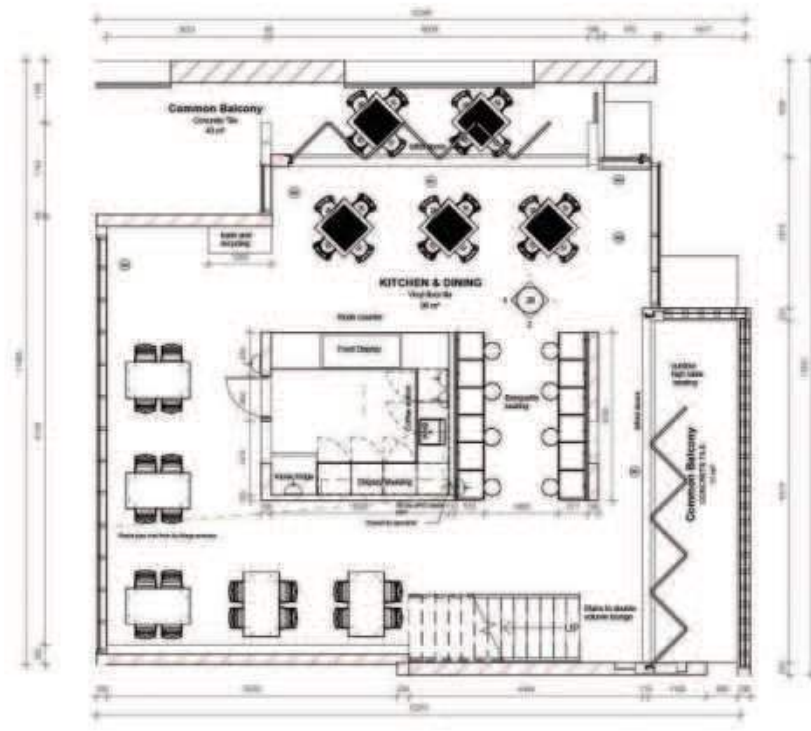


3 BATHROOM ELEVATION 3  
1:50



4 BATHROOM ELEVATION 4  
1:50

No.	Description	Date	PROJECT		CLIENT	
			Fibonacci		Angeline Denenga	
			PROJECT		Date	Project number
			SHEET		2024/11/15	P09
			Studio Bathroom elevations		Scale (if A3)	1:50
			CODE	STATUS	Drawn by	Drawing Number
					A.D	I.D-202
			SURABILITY DESCRIPTION	PURPOSE OF ISSUE	Checked by	REV
					E.M	

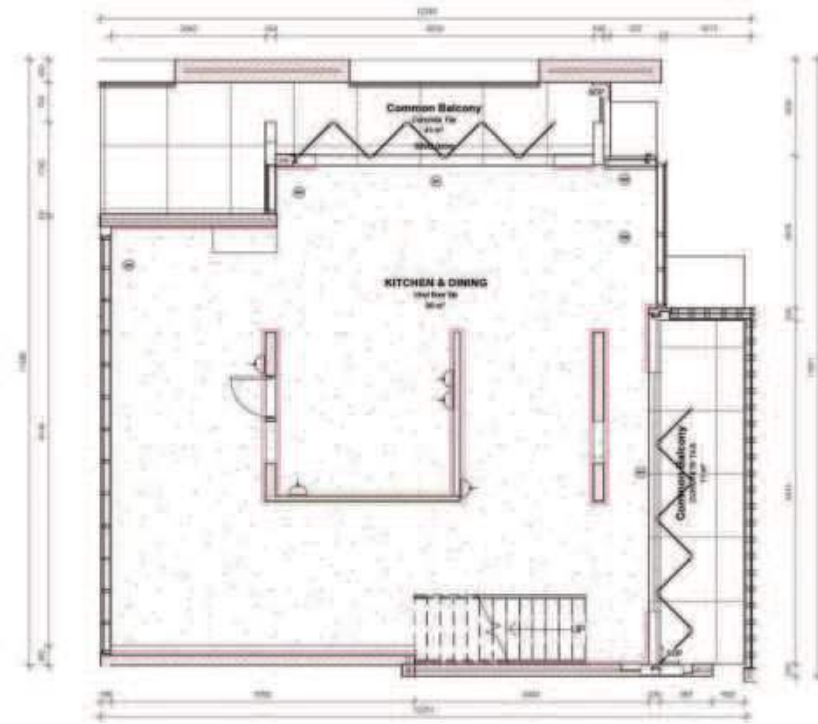


	LED surface mounted downlight
	LED recessed downlight
	LED water leak alarm
	LED water leak panel

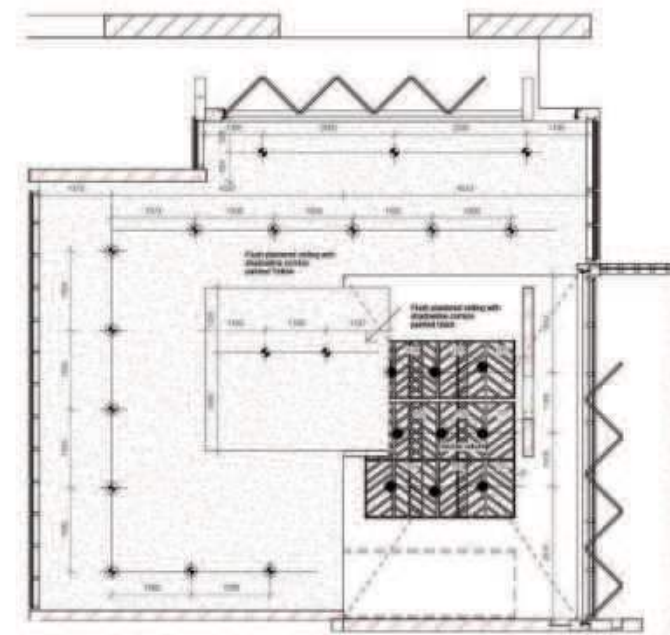
ELECTRICAL SYMBOLS AND DIMENSIONS TO BE USED ONLY

No.	Description	Date	PROJECT		CLIENT		
			Fibonacci		Angeline Denenga		
			SHEET		Date	Project number	Scale (B3 A3)
			CONSTRUCTION LAYOUT PLAN, WATER AND RETICULATION PLAN		2024/11/15	PO9	1:100
					Drawn by	Drawing Number	REV
					A.D	I.D-103	
					Checked by		
					E.M		





1 KITCHEN AND DINING FINISHES PLAN  
1:100









4 KITCHEN AND DINING REFLECTED CEILING PLAN  
1:100

Color Swatch	White	Color Name	White
Color Swatch	Light Grey	Color Name	Light Grey
Color Swatch	Dark Grey	Color Name	Dark Grey
Color Swatch	Black	Color Name	Black








Color Swatch	Light Blue	Color Name	Light Blue
Color Swatch	Light Green	Color Name	Light Green
Color Swatch	Light Yellow	Color Name	Light Yellow

No.	Description	Date	PROJECT		CLIENT	
			Fibonacci		Angeline Denenga	
CODE	STATUS	SUSTAINABILITY DESCRIPTION	PURPOSE OF ISSUE	DATE	PROJECT NUMBER	SCALE (@ A3)
				2024/11/15	PO9	1:100
SHEET				DRAWN BY	DRAWING NUMBER	REV
FINISHES PLAN, REFLECTED CEILING PLAN				A.D	I.D-104	
				CHECKED BY		
				E.M		







Product	Image	Description	Quantity
<b>Studio Bathroom</b>			
Heated Towel Rail		Jeeves Classic C Heated Towel Rail Black with Right Power Connection ZAC0400GR	x1
Pivot shower door		TELESCOPIC PIVOT DOOR 800-1070*1860MM - BLACK/CLEAR	x1
Toilet Paper Holder		Builders Toilet Paper Holder Black 133 x 59 x 98 mm	x1
LED Mirror		Brightstar ML053 LED Rectangular Mirror IP44 On/Off Mirror Touch Switch	x1
Bathroom Vanity		Leroy Merlin Stylo deluxe   Double Drawer Floating Bathroom Vanity Cabinet   Washed Shale	x1
Downlight		Spazio Downlight 3022.3.30, 3022.3.31 Kardan Par 30 Rectangle 32W Black	x2

FURNITURE, FIXTURES AND EQUIPMENT SCHEDULE



Product	Image	Description	Quantity
<b>Studio Bathroom</b>			
Sink Mixer Tap		Basin Mixer Set 3 Piece   Meir   Deck mounted and Modern   Matt Black	x1
Shower Diverter Mixer		Amalfi Timbavati Black Bath Diverter Mixer	x1
Shower Waste		ITD Black Larna Shower Waste Including Grate	x1
Wall Hung Toilet Pan		Siri White Wall Hung Toilet Pan - Incl. Seat	x1
Flush plate		Tivoli Black Globe Flush Plate	x1
Shower Arm		ITD Black Square Shower Arm - 400mm	x1
Square Shower Head		ITD Zola Black Square Shower Head - 250mm	x1

FURNITURE, FIXTURES AND EQUIPMENT SCHEDULE

Product	Image	Description	Quantity
<b>Studio Kitchen</b>			
Fridge		Hisense 154lt Titanium Finish Silver Finish Fridge H225tts	x1
Microwave Oven		Bosch Built-in Compact Microwave Oven 60 x 45 cm Black	x1
Electric Hob		Series 2 Electric Domino Hob 30 cm Black	x1
Sink Mixer		Tivoli Matera Black Spring Sink Mixer	x1
Microwave		Samsung microwave solo mirror 23l	x1
Downlight		Solo Round GU10 Fixed Surface Mounted Down Light, Black	x3

FURNITURE, FIXTURES AND EQUIPMENT SCHEDULE